



Design Inspiration
Concept plans 99m² - 150m²

About Lockwood

Lockwood has been designing and building quality timber homes since 1951, with more than 50,000 completed in New Zealand and around the world.

Our unique building system uses solid timber boards locked together with patented aluminium profiles, refined over decades for strength, speed, and consistency.

Certified by CodeMark, Lockwood homes are built to last. When you build with us, you're supported by a dedicated team committed to bringing your home to life.



Design by Lockwood

The Lockwood Design Studio supports designers, architects, and builders with concept plans and detailing, and has designed many of the homes featured in this book.

This collection of homes between 99m² - 150m² is here to inspire and provide a starting point for your own ideas. You're welcome to bring us your own plans or sketches, work with a local designer, or directly with your Lockwood contractor.

Whether you adapt an existing design or start from scratch, we'll work with you to create a home that suits your style, site, and budget. Rooflines, layouts, and features, such as garages, can all be tailored to meet your needs.

Visit lockwood.co.nz for more
concept design ideas and see our
galleries for inspiration


Concept Designs

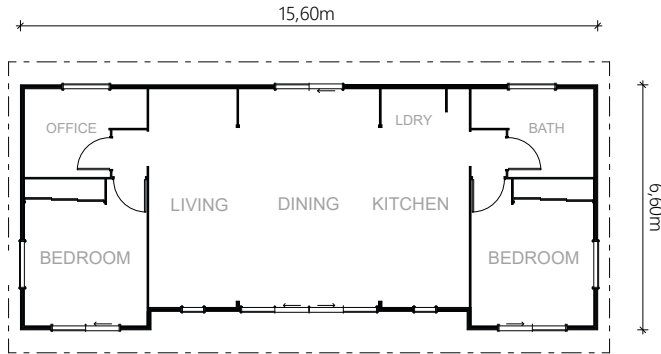
Vacationer 99m ²	5
Nevis 100m ²	7
Karewa 120m ²	9
Marahau 128m ²	11
Kawhia 130m ²	13
Lifestyler 131m ²	15
Riverview 142m ²	17
Acacia 148m ²	18



Vacationer

99m²

 2+ Bedrooms  1 Bathroom  1 Living area  Optional



The Vacationer is perfect as a beachside getaway or for downsizing to hassle free retirement living. With two bedrooms plus an office, one bathroom and open plan living, the Vacationer was designed using the very latest 'Lifemark' accreditation standards making it suitable as an accessible home.




The office could become a second bathroom if a two bed, two bath unit is required.

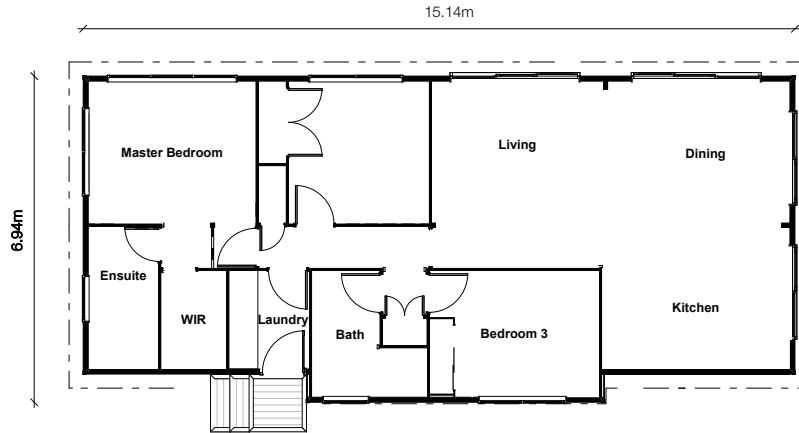




Nevis

100m²

 3 Bedrooms  2 Bathrooms  1 Living area  Optional



The Nevis makes the most of its 100m² footprint, with high raking ceilings that add space and light to the open-plan kitchen, dining, and living area. This three-bedroom home includes a generous main suite with walk-in robe and ensuite, plus a separate laundry for added convenience.

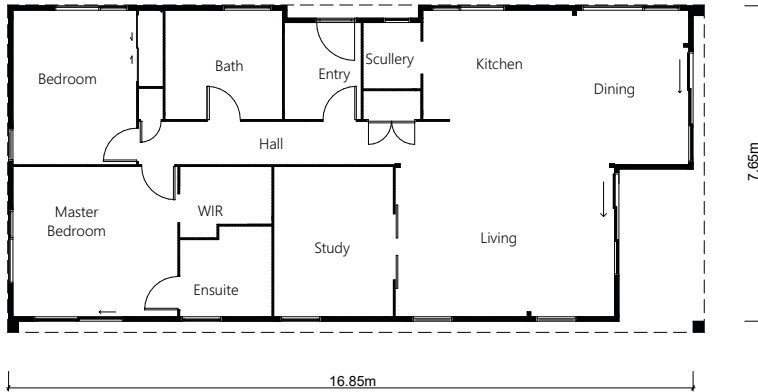




Karewa

120m²

 2 Bedrooms  2 Bathrooms  2 Living areas  Optional





The Karewa combines clever design with modern style to create a compact home that feels open and inviting. A striking monopitch roofline runs the length of the home, adding height and character to the open-plan kitchen, living, and dining area. It's a smart, contemporary choice for those wanting to make the most of a smaller footprint.

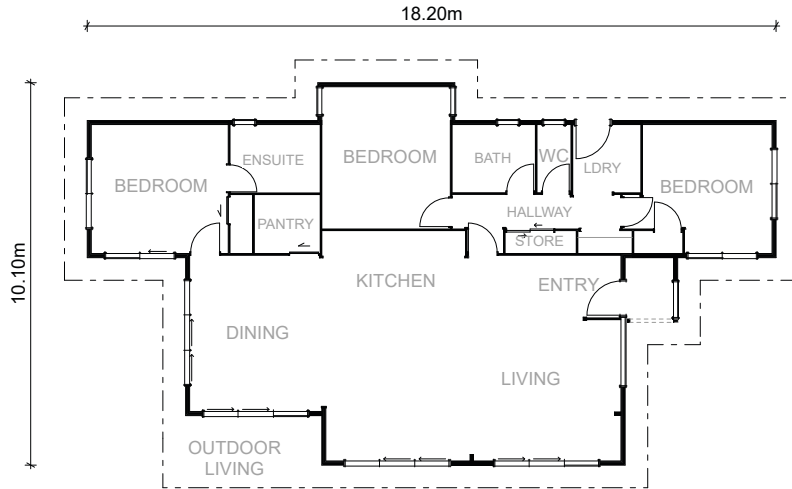




Marahau

128m²

 3 Bedrooms  2 Bathrooms  1 Living area  Optional



The Marahau is light-filled and inviting, with clerestory windows and ranch sliders bringing the outdoors in. A walk-in pantry sits just off the kitchen, adding extra storage without taking up space. With a covered outdoor area off the dining room, this design is ideal for relaxed family living or holiday getaways.

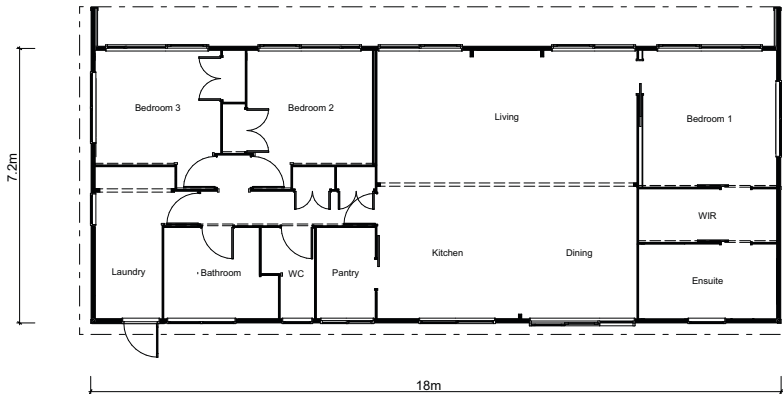




Kawhia

130m²

 3 Bedrooms  2 Bathrooms  1 Living area  Optional



The long narrow lines of the Kawhia are perfectly suited for beach, farm or town living. The master bedroom and ensuite are tucked away privately to one side, with two bedrooms on the other. A scullery adjoining the kitchen and a separate toilet add extra practicality and convenience to the layout.


A second bathroom and separate laundry make this design perfect for families and visitors, or for downsizing in style.

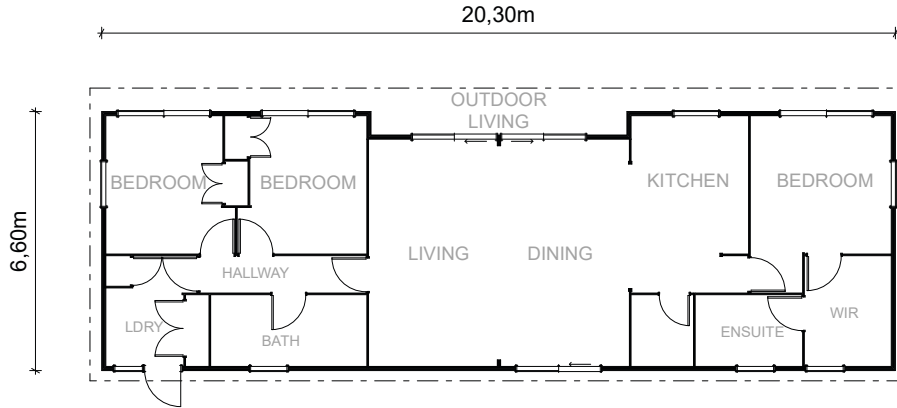




Lifestyler

131m²

 3 Bedrooms  2 Bathrooms  1 Living area  Optional



The Lifestyler design is the combination of a practical floor plan with stylish architectural details, creating a very liveable 3 bed, 2 bath modern home.

This home is designed with a monopitch roofline and the classic Lockwood styling of sarked timber ceilings, laminated beams and extra high joinery. There is also the option to choose a trussed gable roofline with plasterboard ceilings.

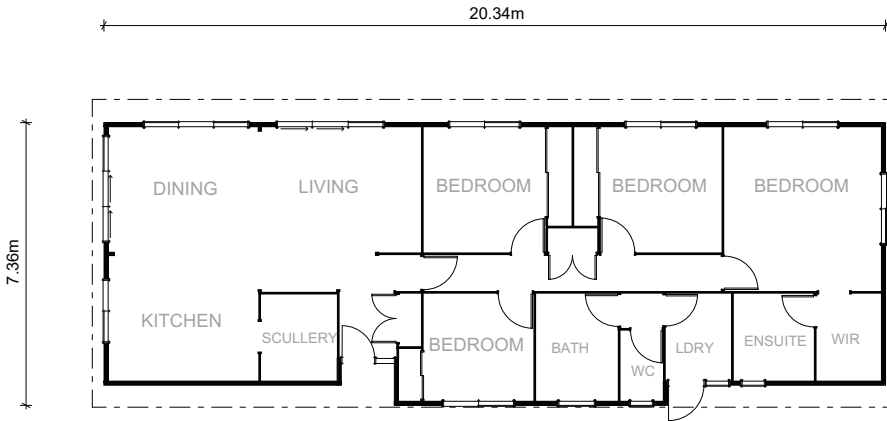




Riverview

142m²

 4 Bedrooms  2 Bathrooms  1 Living area  Optional



The four-bedroom Riverview packs a whole lot into a 142m² footprint, including generous bedrooms, two bathrooms, scullery and walk-in-wardrobe. Choose the classic Lockwood look with sarked timber ceilings, laminated beams and gable end windows, or a trussed gable roofline with plasterboard ceilings.



Riverview with plasterboard ceilings



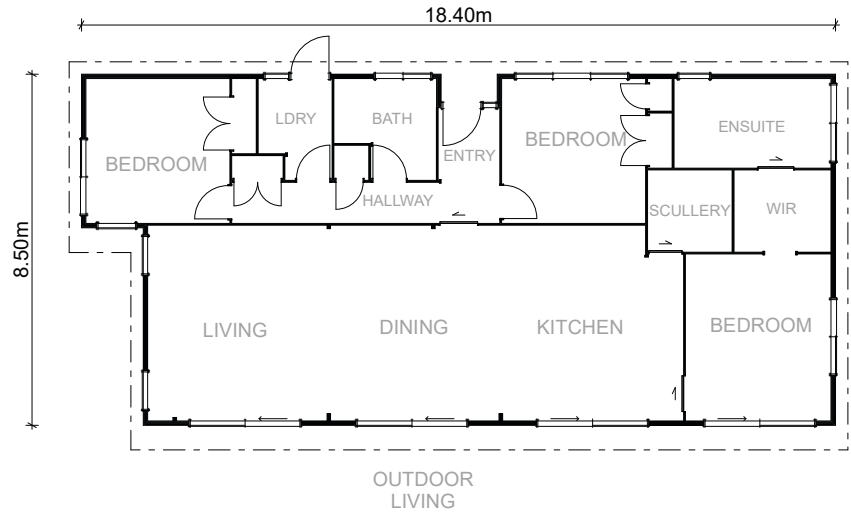




Acacia

148m²

 3 Bedrooms
  2 Bathrooms
  1 Living area
  Optional



The Acacia is cleverly divided into two wings—one with the open-plan kitchen, scullery, living area, and main suite, and the other with two bedrooms, the main bathroom, laundry, and entry. The master includes a walk-through robe and generous ensuite for added privacy. With sliding doors off the kitchen, dining, and living spaces, this home is ideal for entertaining.

Contact us to start your home building journey today!

Phone 0508 562 596 or +64 7 347 7691

Email info@lockwood.co.nz | lockwood.co.nz