

Pinevine

Contents

Handy Contacts	1
New company car - Volkswagen Passat	1
Celebrating Long Service.....	2
Dust Bin Demolition	2
Latest Photography - Douglas Family Holiday Home	3
Fieldays 2022	4
Life in Red - Covid Updates.....	4
Branding makes a statement at Mt Maunganui.....	5
Freight Cost Increase.....	5
Technical Update.....	5
H1 Changes Coming Soon.....	6
Our new planer is on its way.....	6
Ancient knowledge from our elders.....	6

Current Lead Times

Next production slots are available in mid April.

From “order approved for production” to load out - allow 8-9 weeks for structures up to 120 sq m. Allow 9-10 weeks for larger more complex orders.

Load out dates are dependent on our current supply chain.

Handy Contacts

Below is a summary of handy contacts. We will keep this list up to date and on the front page of PineVine each issue. It has also been uploaded to the Extranet>HeadOffice Contacts:

What	Address
Field Reports	technical@lockwood.co.nz
Builders on-site Checklists	technical@lockwood.co.nz
Lockwood Component Orders	accounts@lockwood.co.nz
Sundry Orders	chrisdibley@lockwood.co.nz
General enquiries / unsure	info@lockwood.co.nz

New company car - Volkswagen Passat

We have purchased a Passat Alltrack station wagon. A good looking car made to look even smarter with the addition of a stunning dusk photo and Lockwood branding. Under the bonnet is VW's 2.0-litre, four cylinder turbo diesel putting out 140kW at 3500-4000rpm and 400Nm at 1750-3000rpm. Its a purposeful and spacious station wagon, comfortable to drive both around town and long distances. The Mondeo station wagon is now in the South Island and will be used by staff based at the SIRO office and working in the region.



Celebrating Long Service

In November we held a special celebration to honour the outstanding contribution Simon Apete has made over his 40-year service with Lockwood. Simon, who is our pre-cut supervisor, started with Lockwood in 1984. He has been a mentor and role model to many staff throughout his time, especially to those in the Tokelauan community. A special performance was arranged by a group of Tokelauan staff to show their respect and admiration which included a traditional Coconut ceremony. The surprise celebration was attended by Joe and Jo-Anne and Simon's wife, daughter and grandchildren. It was truly a wonderful tribute to Simon, his hard work and dedication to Lockwood over the last 40 years.



Dust Bin Demolition

It was all hands on deck last week to demolish the 'A' side of the dust extraction system in preparation for the new Egmont Air bag system and arrival of the new planer. The first step was the removal of electrical gear, cyclones and sprinkler system. The housing was demolished and the bins removed by crane. The operation went smoothly, and the area is now ready for the installation of the new system.



Latest Photography - Douglas Family Holiday Home



Our first photographed home for 2022 will go live next week!

This elevated holiday home, surrounded by native bush was built for clients Rod and Suzie Douglas by de Roo Construction, Lockwood Taupo.

“This was a very exciting project to work on,” says Karen de Roo, admin and projects manager at de Roo Construction, “the Douglas family wanted an elevated, and low maintenance home that felt like it was floating in the trees”.

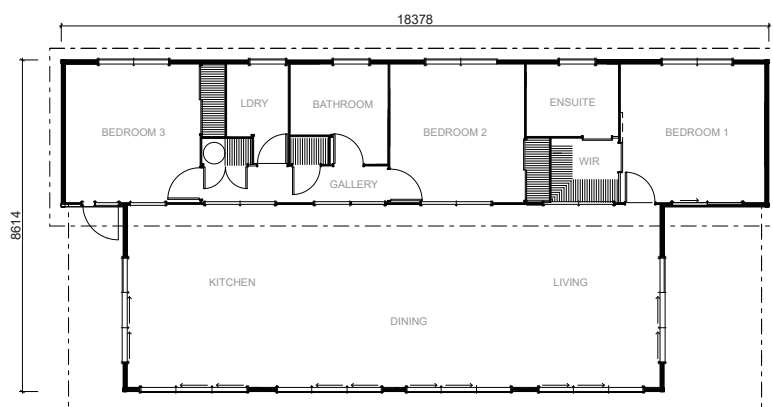
The floorplan is only slightly modified from the ‘Kinloch’ ex show-home

design. Suzie Douglas says “We love the natural timber finish inside, the interesting ceiling shapes and modern, minimalist feel, the low maintenance exterior is a huge bonus.”

The home has two distinct halves, with the open plan living, dining and kitchen area at the front, with three bedrooms and two bathrooms at the rear. A split mono-pitch roofline allows for highlight windows to bring plenty of natural light into the back half of the home. Sliding stacker doors along the front of the home open out to the wrap-around deck and the natural bush surroundings.

Covenants in the area dictated natural colours for the exterior. The aluminium cladding in “Lichen” coupled with Textura black joinery fitted the brief perfectly and makes the home blend seamlessly into the surrounding bush.

Well done de Roo Construction for delivering this outstanding bach for the Douglas family! The home will be live on the website site early next week. Component costings can be found on the concept design pricelist. For those who have access to the design reference library, you will find consent plans available under design and build L20056.



Fieldays 2022

We'll be back at Fieldays in June 2022! We have secured a high-profile site right on the corner of the Rural Living Precinct. The foot traffic past this area is high as it's right next to the food court, giving us excellent exposure for the event. This year we are taking a Lakeview show home with an eco-friendly and natural theme. The Lakeview will showcase Lockwood VG Pine on the exterior and be specified to exceed 2022 H1 insulation requirements including thermally broken joinery, R7 ceiling insulation. The smaller footprint gives us an opportunity to showcase design and build projects on the site too, creating a comfortable area where visitors can experience Lockwood while they explore options for their building projects.



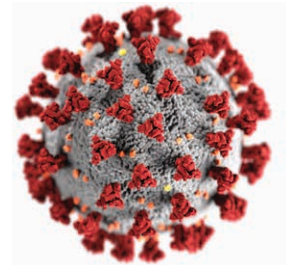
Life in Red - Covid Updates

The Lockwood team is committed to minimising the risk of COVID-19 infection in our workplace and our community. With community transmission of the Omicron variant likely to be widespread in the coming weeks, we have reviewed our policies and systems to ensure we are doing all we can to minimise the spread and keep our staff and visitors safe.

We are currently not conducting Factory Tours but visitors are now welcome back into the office by appointment.

Visitors are advised of the following:

- If you have flu-like symptoms, please refrain from visiting our workplace.
- Please record your visit using the NZCOVID tracer app and in our Visitors' Journal.
- Please show your My Vaccine Pass. Unvaccinated visitors will not be allowed into our office.
- On arrival you are invited to have your temperature checked. If you have a temperature of 37.5 degrees or over, you will not be allowed to enter our premises.
- Please keep your mask on when you are inside, practice social distancing and good hygiene.
- You are welcome to remove your mask in meeting rooms if social distancing can be maintained.



In general, we discourage visits to different work areas. For staff the standard guidelines still apply within the workplace including staying home if you are sick, wearing masks when indoors and visiting other work areas, temperature checks at the start of the day, maintaining social distancing and good hygiene. Staff have also been encouraged to get the booster dose as soon as they are eligible.

We have very limited stock of Rapid Antigen tests available for staff and visitors. Due the restricted availability of the tests, we are not able to on-sell tests to Contractors at this stage. We will be ordering more when we can and will keep you up to date once we are able to supply.

Branding makes a statement at Mt Maunganui



Soren and his team at Seaside Homes are making a statement with Lockwood branded scrim at their latest build site in Mt Manganui. As well as providing privacy and limiting access to the site, the open weave mesh offers a perfect marketing opportunity. The open weave fabric can be printed in full colour and is an ideal solution for high wind or exposed sites. It is designed to have a long shelf life of up to 2 years when correctly installed, and can be easily rolled, unrolled and transported between sites. The scrim comes in a number of different sizes, starting at 1.6x10m and up to 1.8x50m. It is very reasonably priced from \$189 up to \$704.(+gst & freight). We encourage you to order this excellent marketing tool for your sites. Please talk to the Lockwood Marketing team who can arrange artwork and order on your behalf.

Freight Cost Increase

Transflow have increased their rates for freight around the country. A 7% increase for the North Island and 5% for the South Island will come into effect on the 1st April. A full list of rates is available on the Extranet>Pricing.

Technical Update

Lockwood Sliding Doors

In all three joinery suites, Weathertight, 41 Architectural and All Seasons-Thermally Broken, the following applies;

- Up to Very High wind

- Inside Sliders. Sashes are allowed, this includes Flushline Sliders

- Extra High Wind

- Outside Sliders. No sashes. These are called Urban sliders in the Weathertight range.

- Specific Engineered Design

- Requires specific design. Outside Sliders. No sashes



Our new planer is on its way

Our custom Leadermac Planer has been built and currently being shipped to NZ. We expect to take delivery in the first week of March and plan to have it up and running in a few weeks!

H1 Changes Coming Soon

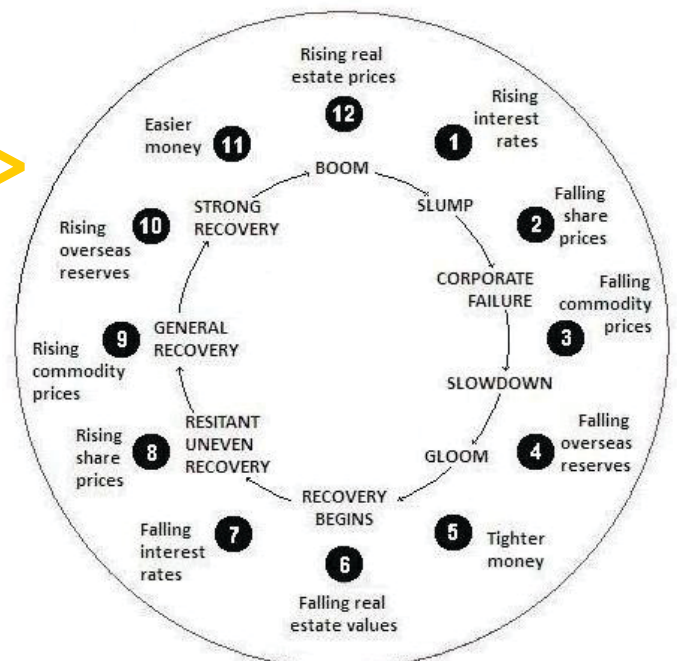
The Ministry of Business, Innovation and Employment (MBIE) are proceeding with updates to the building code to make new builds warmer, drier and healthier. The new requirements become mandatory from 3 November 2022 and aim to reduce energy needed for heating residential homes by approx. 40% over current minimum requirements.

The good news is the Lockwood wall system complies with the updated requirements of R2.0. All joinery will need to be thermally broken to meet the requirements across the six climate zones. We are currently developing a I-Rafter solution to insure we can meet the insulation requirements in our skillion roofs. The I-Rafter design and detailing is underway and we will be sharing more information on this development soon. Be sure to check out the next episode of Lockwood Connect to learn more.



Ancient knowledge from our elders

We wanted to share this economy cycle clock with you, it's a very old concept but remains relevant. Unfortunately there's no time or date function on this clock. Can you pick where we are now?



We want to hear from you!

If you have any news, events, successes or challenges you would like to share with the network, please get in touch with Sarah (sarahsmith@lockwood.co.nz) so your stories can be included in the next issue.