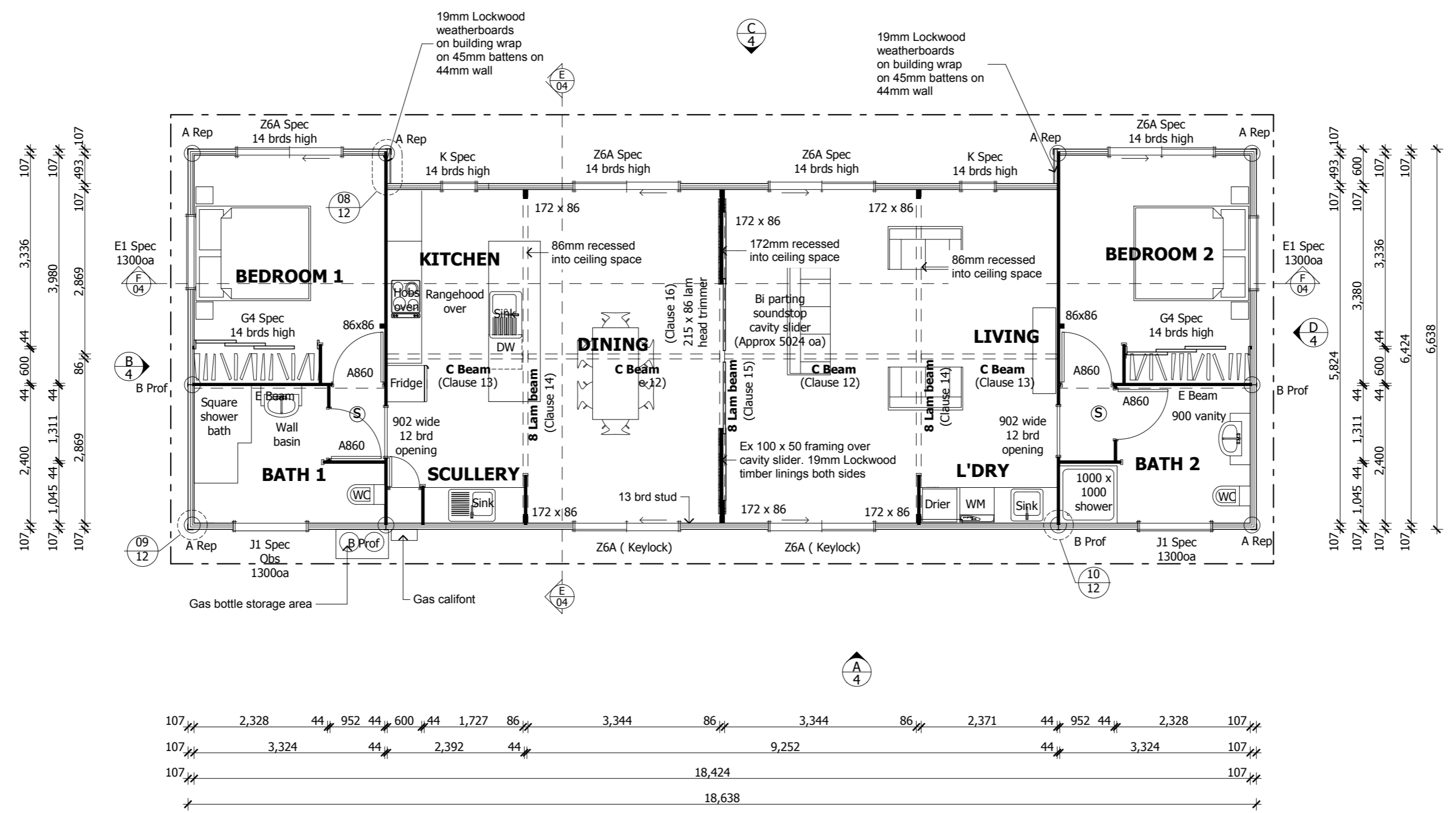


		18,638			
		3,538	11,562	3,538	
107	3,324	107	11,562	107	3,324
107	3,324	44	11,688	44	3,324
107	2,180	44	1,100	44	2,180



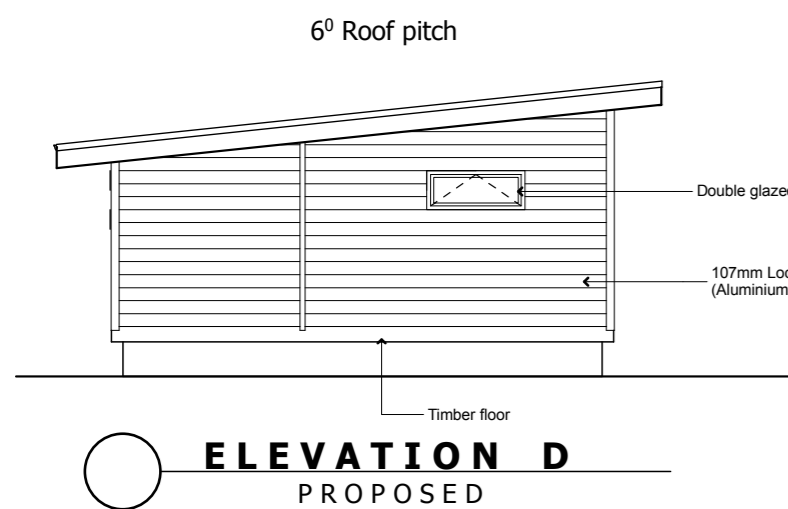
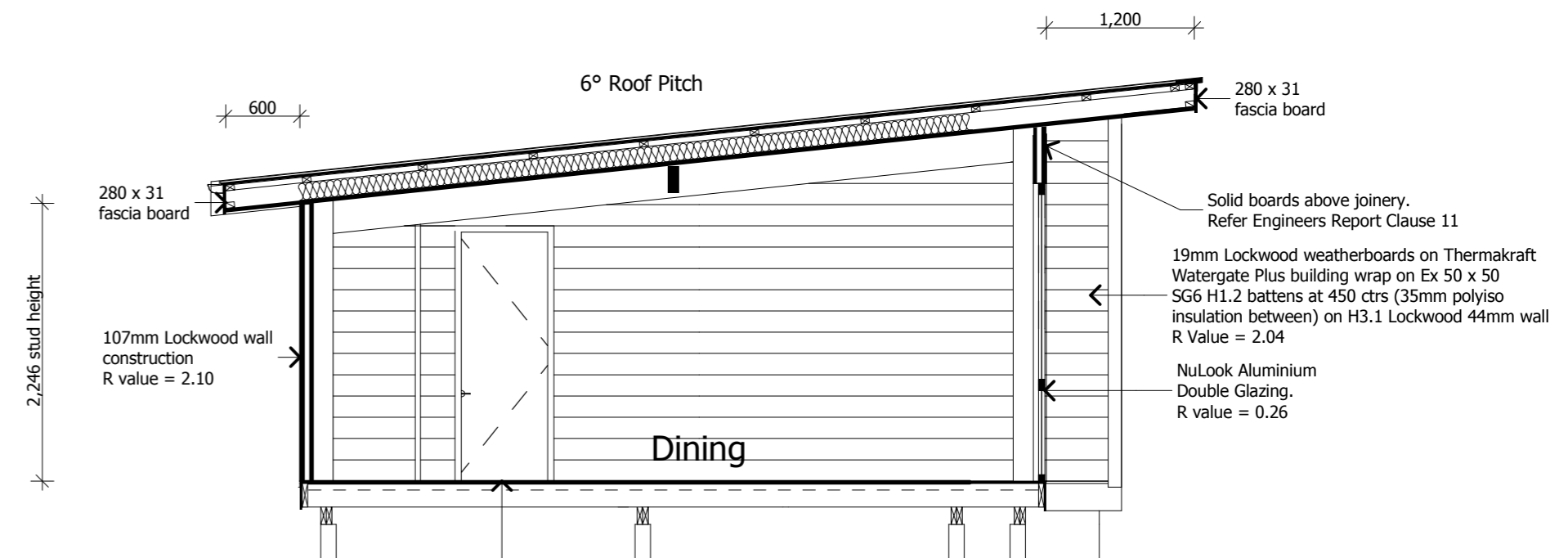
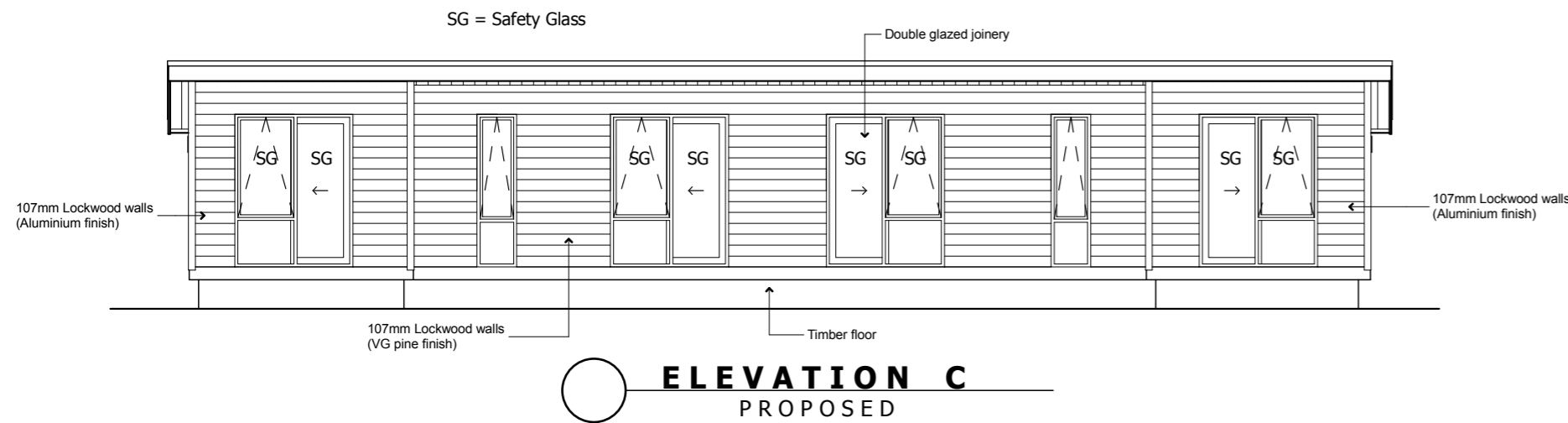
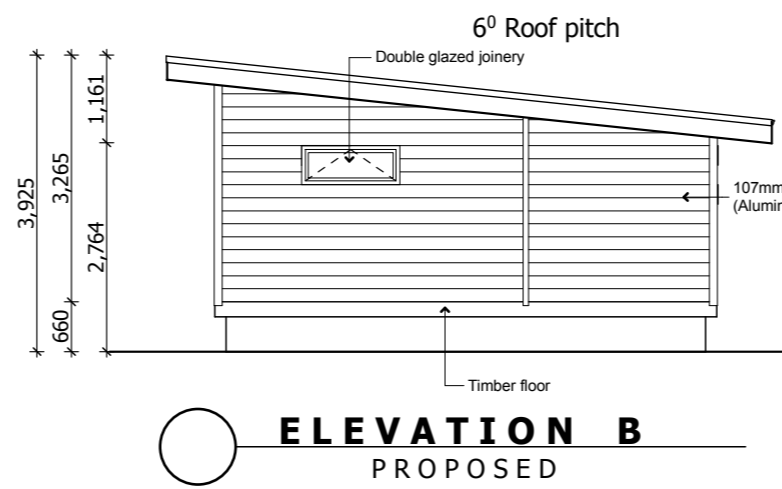
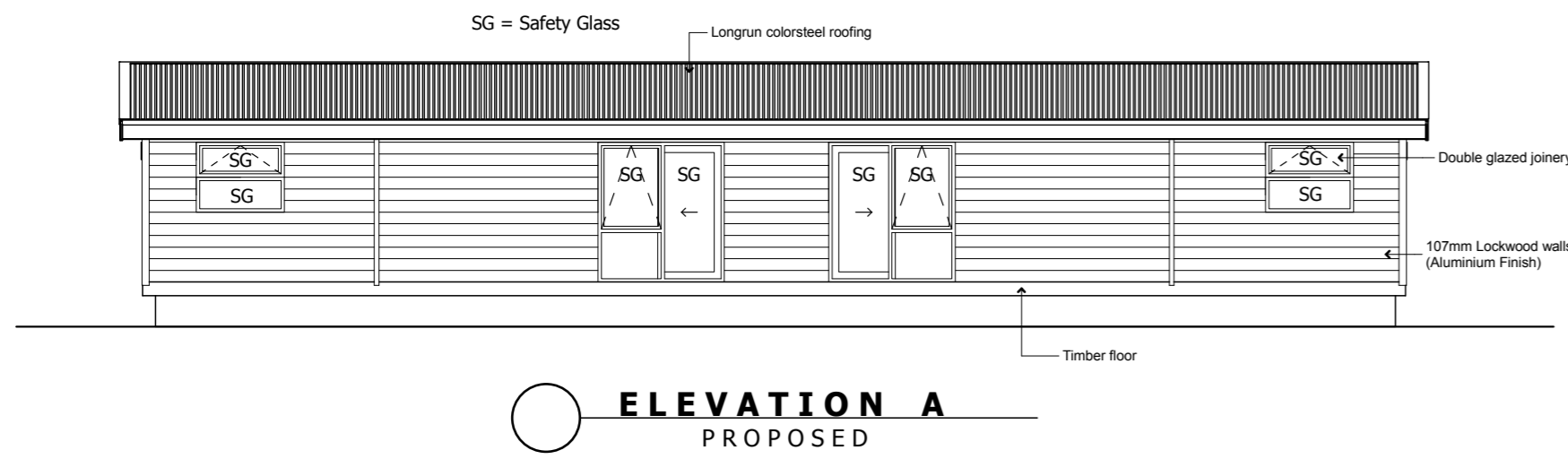
LOCKWOOD DESIGN REFERENCE PLANS.
 These plans can only be used by Licensed Lockwood Contractors and Lockwood Group staff.
 Specifications and details are indicative and do not account for project or site specific requirements or changes to relevant NZ Standard
 These plans are not suitable for Consent and are not to be reproduced.



Job Number:

L20013

© All plans copyright Lockwood



Longrun colorsteel roofing on self supporting roofing underlay (Thermakraft 215) on wire netting on Ex 75 x 50 H1.2 SG8 purlins @ 900 ctrs on Ex 150 x 50 H1.2 SG8 dummy rafters at 450 ctrs (R3.2 batts between) on 35mm H3.1 Lockwood sarking. R Value = 3.09

Longrun colorsteel roofing on self supporting roofing underlay (Thermakraft 215) on wire netting on Ex 75 x 50 H1.2 SG8 purlins @ 900 ctrs on Ex 150 x 50 H1.2 SG8 dummy rafters at 740 ctrs (R3.2 batts between) on 35mm H3.1 Lockwood sarking. R Value = 3.24

Longrun colorsteel roofing on self supporting roofing underlay (Thermakraft 215) on wire netting on Ex 75 x 50 H1.2 SG8 purlins @ 900 ctrs on Ex 150 x 50 H1.2 SG8 dummy rafters at 450 ctrs (R3.2 batts between) on 35mm H3.1 Lockwood sarking. R Value = 3.09

