

Design Inspiration

Concept plans 60m² - 150m²



Table of Contents

About Lockwood.....	4
Design by Lockwood.....	5
Small to Medium Sized Home Designs	6
Haven.....60m ²	7
Lakeview70m ²	9
Vacationer99m ²	10
Nelson.....103m ²	13
Parawai111m ²	14
Motiti120m ²	17
Te Rakau125m ²	19
Al-fresco126m ²	21
Verandah128m ²	23
Marahau128m ²	24
Lifestyler131m ²	27
Riverview142m ²	29
Acacia148m ²	30



Thank you New Zealand!

Lockwood are proud to have received Gold in the 2021 Readers Digest Quality Service Awards.

About Lockwood

Lockwood has a reputation for building beautiful homes of outstanding quality and structural integrity. Over the years the company has continually refined its products with technical innovations and contemporary architectural design.

Since 1951, we have been designing and developing concept plans for clients in New Zealand and around the world.



More than 50,000 homes have been built using Lockwood's unique system of timber boards that are locked together with aluminium x-profiles.

Our construction system has been refined and proven by our history and our commitment to consistency and quality. Lockwood homes can be built quickly, and are certified by CodeMark.

When you decide to build a Lockwood home you join the Lockwood family. From the designers and engineers, to the skilled craftsmen, to the building contractors; everyone has a strong sense of pride and commitment to the final outcome – your new home!

Visit lockwood.co.nz for more
concept design ideas and see our
galleries for inspiration



Design by Lockwood

The Lockwood Design Studio supports designers, architects and builders with concept plans and detailing, and designed many of the plans you will see in this book. These designs can be a great inspiration for the design of your own home. The latest design and build projects can be viewed on the Lockwood website.

You can bring us your own sketches or plans, engage a local designer or architect to help you with the design process, or work with your local building contractor. You can modify an existing Lockwood design to suit your needs, or you can start with a blank canvas and design your own unique architectural statement.

Lockwood design is often associated with high, raked timber-sarked ceilings, but we can also incorporate a conventional trussed roof with flat ceilings for a more cost-effective option. A different roofline can dramatically change the look and feel of your home. Adding garaging to suit the site, changing room dimensions, or adding new spaces are all possible.

Spending quality time in the design process will help you form and clarify ideas to help bring your Lockwood building project to life.



Classic Lockwood with a raking timber ceiling



Lockwood with a trussed roof and plasterboard ceilings



Haven

60m²



2 Bedrooms



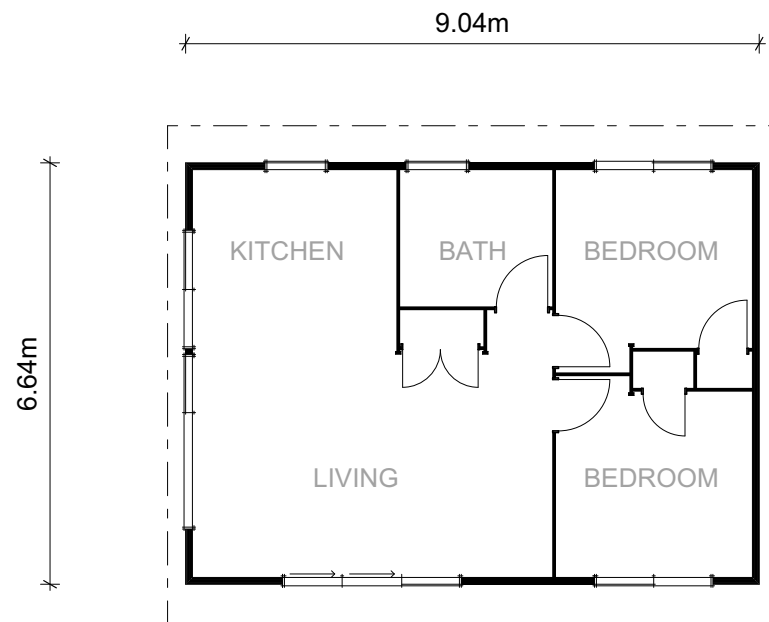
1 Bathroom



1 Living area



Optional



The Haven is a modern compact plan with two bedrooms, one bathroom, and open plan living. Designed to fit within most council requirements, this small home is perfect for a second dwelling or getaway pad. The mono-pitch roofline and high, sarked, timber ceilings with large sliding doors offer a great sense of space and light.

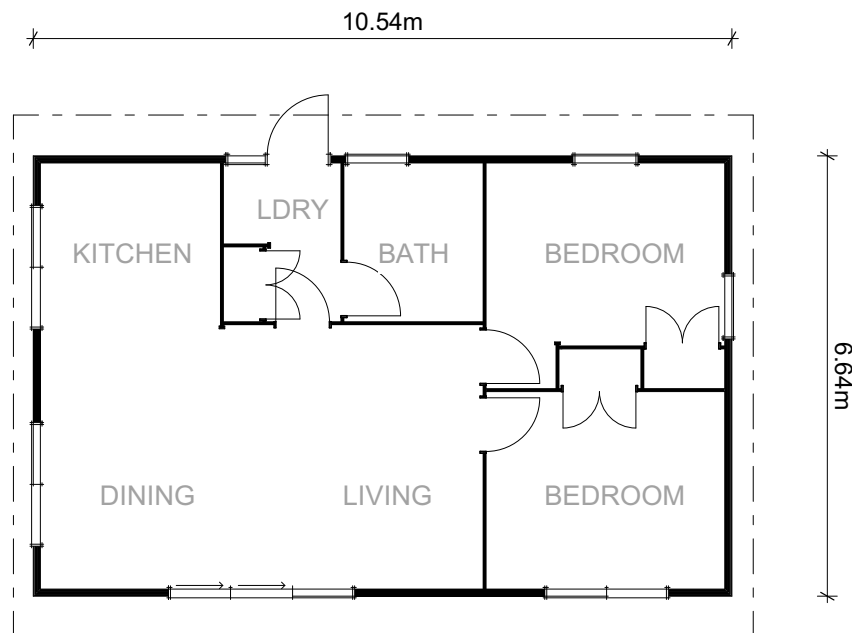




Lakeview

70m²

 2 Bedrooms  1 Bathroom  1 Living area  Optional



Have you got a mountain view, sea view, garden view? Whatever your outlook, this surprisingly spacious small home exudes warmth and character and will perfectly suit any scene.



The Lakeview is modern and inviting, with spaces made airy and restful with the stylish use of high sarked timber ceilings and extra height joinery.

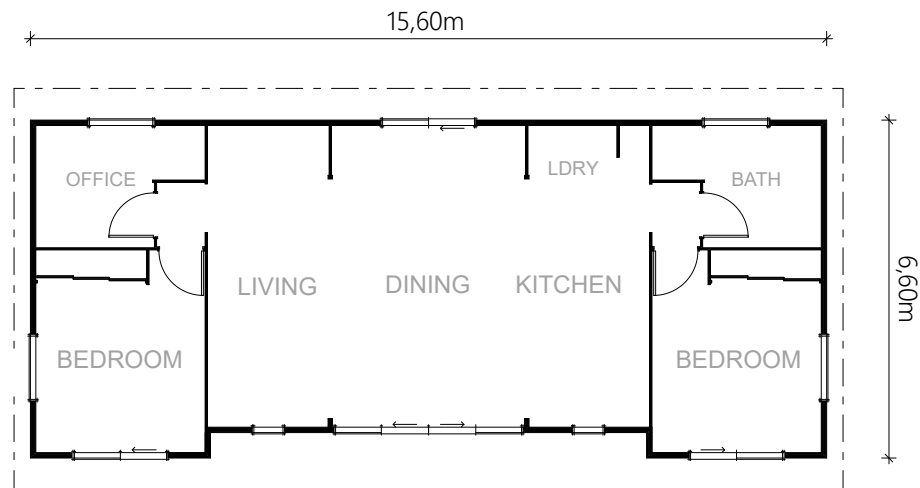
This home works equally well as a second dwelling, for first time home buyers or for bringing older family members closer to home whilst maintaining their independence.



Vacationer

99m²

 2+ Bedrooms  1 Bathroom  1 Living area  Optional



The Vacationer is perfect as a beachside getaway or for downsizing to hassle free retirement living. With two bedrooms plus an office, one bathroom and open plan living, the Vacationer was designed using the very latest 'Lifemark' accreditation standards making it suitable as an accessible home.

The office could become a second bathroom if a two bed, two bath unit is required.

Plans are available for a mono-pitch, raking sarked ceiling as shown on this page or a trussed, gable roofline as shown in the full page image

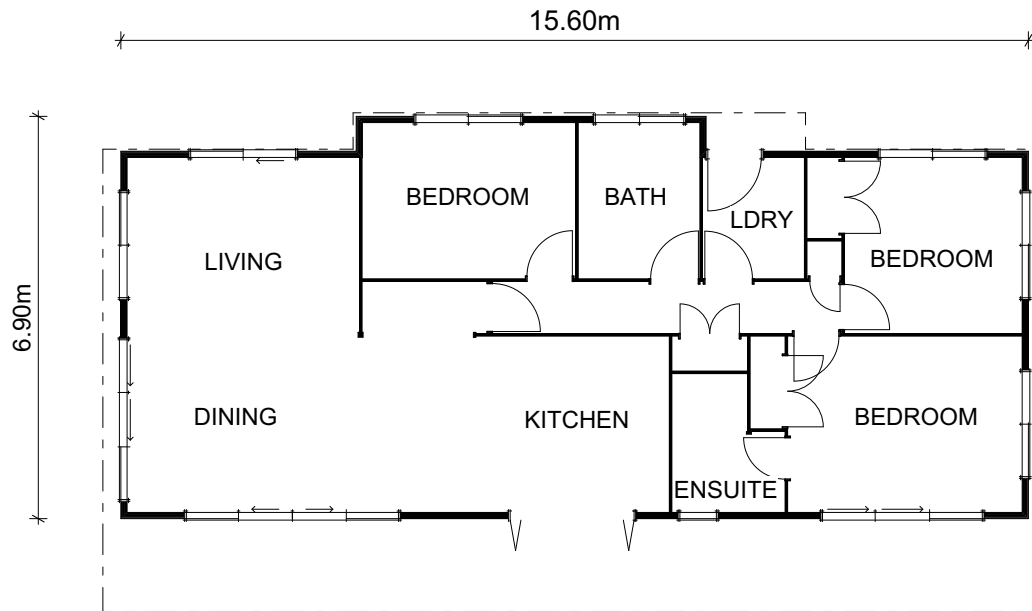




Nelson

103m²

 3 Bedrooms  2 Bathrooms  1 Living area  Optional



With cleverly designed spaces, the iconic Nelson has been a constant favourite no matter the location.





Modern adaptations to the plan have refined the design which is now perfect for quality family living on a small footprint. The deck runs the length of the home and creates that all important indoor-outdoor flow required in a contemporary design.

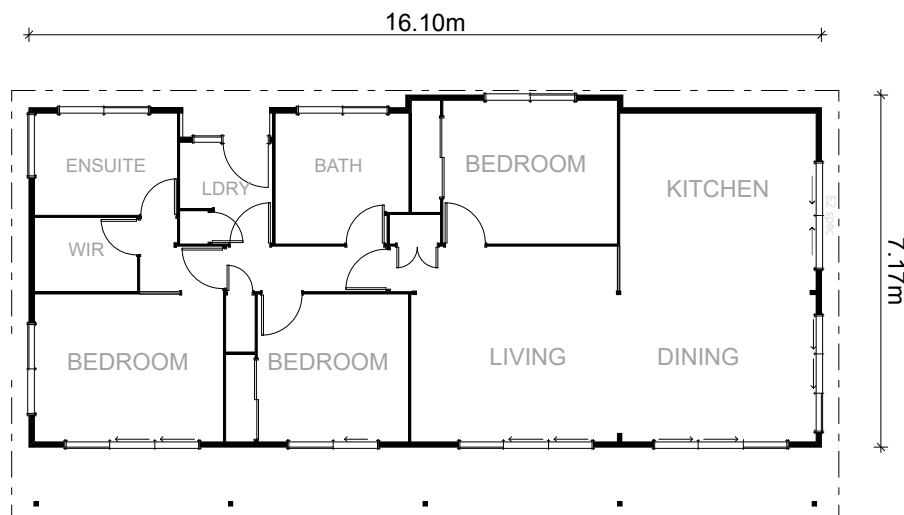
Kitchen bi-fold windows open onto the deck making al-fresco dining an easy option also adding an element of interest under the wide eave. The ensuite and main bedroom are generously proportioned.



Parawai

111m²

 3 Bedrooms  2 Bathrooms  1 Living area  Optional



The Lockwood Parawai is perfect for family holidays, entertaining and living in modern comfort. The contemporary monopitched roofline is a variation on the traditional gable, and the vaulted high ceiling adds volume to the interior spaces.

The separate laundry and large family bathroom makes for easy living when the crowds come to stay. With large sliding doors from most rooms, the Parawai is designed with excellent indoor-outdoor flow.







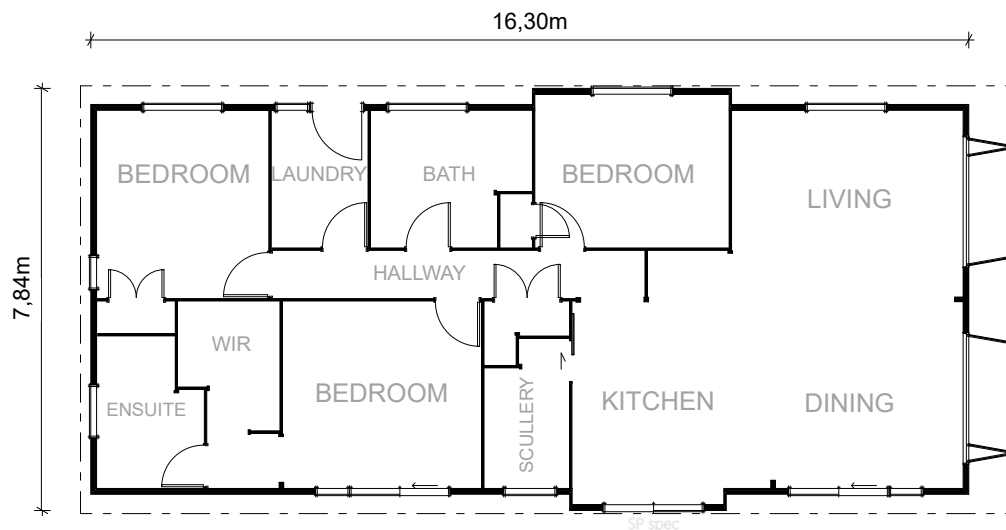




Motiti

120m²

 3 Bedrooms  2 Bathrooms  1 Living area  Optional



This perfectly proportioned family home features high raking gabled ceilings creating a sense of airiness throughout. High gabled windows over the bi-fold doors in the living area further enhance the openness, and offer abundant light into the open plan living, dining and kitchen space.

The cleverly designed master suite includes a walk-in-wardrobe and ensuite. The inclusion of a generous scullery and separate laundry makes the Motiti an ideal, compact family home.

If you like the Motiti design but are looking for something a bit bigger, ask us about our 128m² Seaview plan









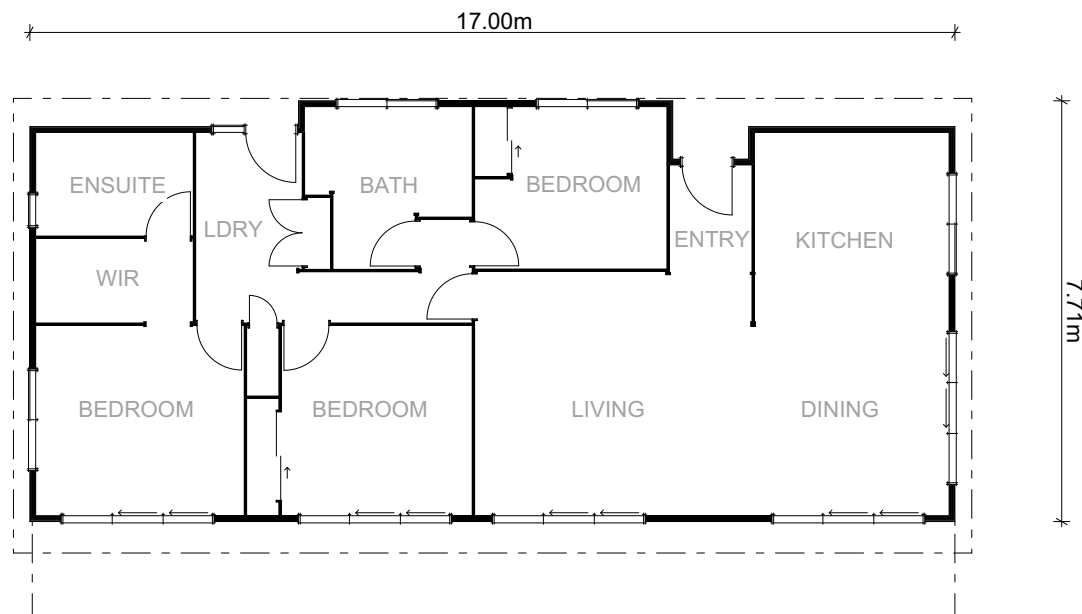
LOCKWOOD

WE BUILD THE WAY YOU LIVE

Te Rakau

125m²

 3 Bedrooms  2 Bathrooms  1 Living area  Optional



The Te Rakau is a sunny home that is connected with the outdoors from almost every room. Ranch sliders in the kitchen, dining, living, second and main bedroom open this home up completely. The extended eave along the front offers shelter from the elements as well as a visual break to the simple monopitched roofline.





The kitchen is welcoming and spacious with a central island becoming the heart of this social zone. This a light filled and contemporary design whether you are after a family, retirement or holiday home.

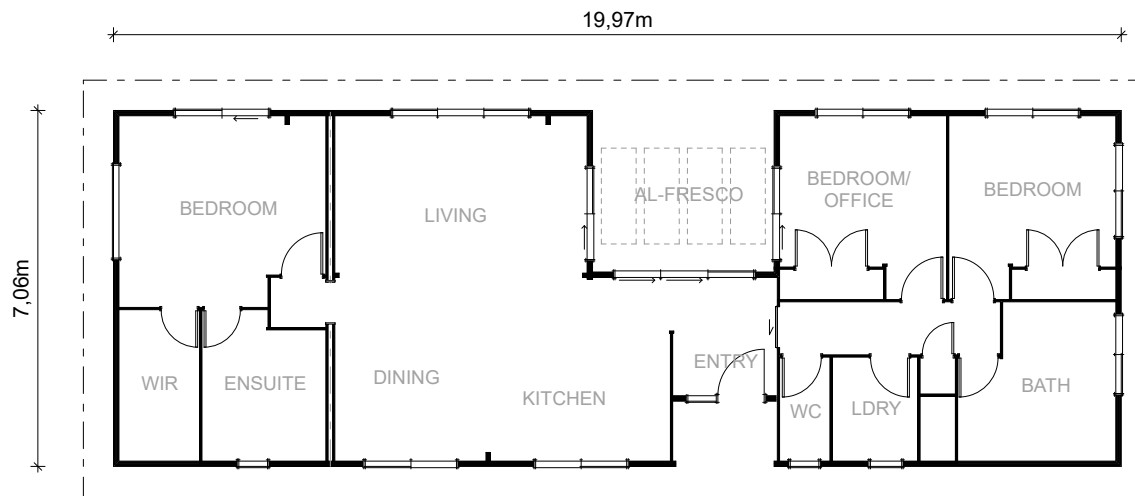




Al-fresco

126m²

 3 Bedrooms  2 Bathrooms  1 Living area  Optional







The Al-fresco is a modern architectural design, perfect for contemporary living. The clever inclusion of an al-fresco outdoor dining area is well positioned to the kitchen for entertaining. This all-weather entertainment space is an excellent solution for providing either privacy in urban environments or shelter from the elements.

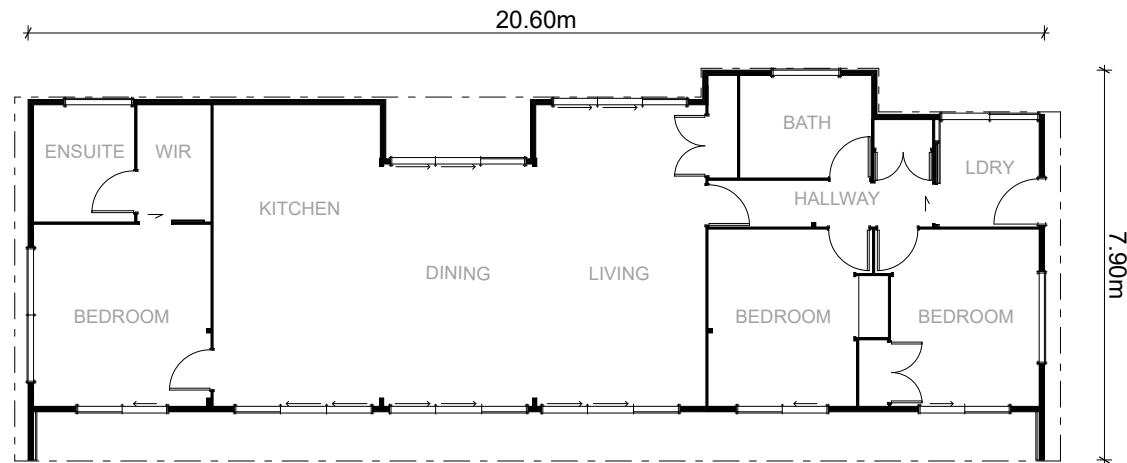


LOCKWOOD Verandah

Verandah

128m²

 3 Bedrooms  2 Bathrooms  1 Living area  Optional







The long narrow lines of the Verandah are perfectly suited for beach, farm or town living. The master bedroom and ensuite are tucked away privately to one side, with two bedrooms on the other. Generous storage spaces are included in the living area and next to the laundry.

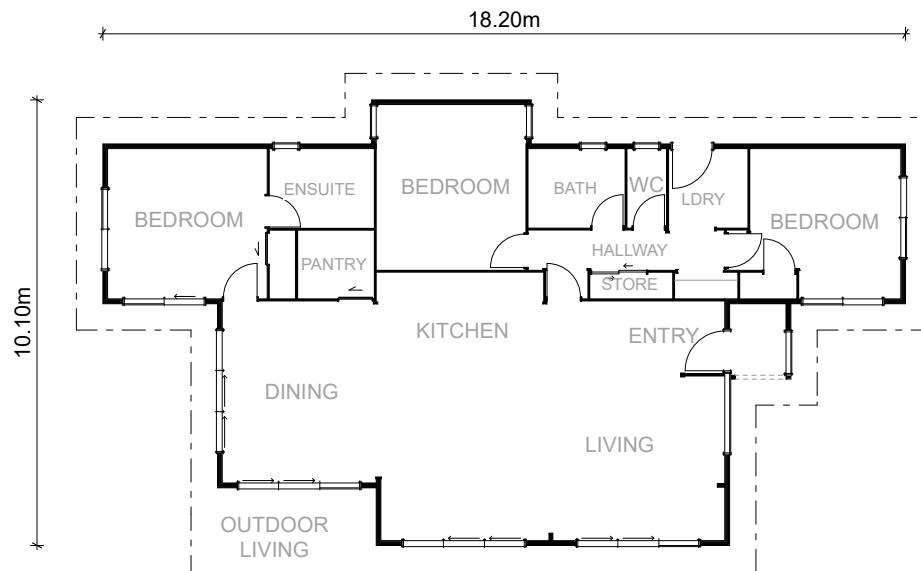
The open plan design, paired with blonded timber interiors, features outdoor living access to the front and back, creating a pleasing sense of well-being. A second bathroom and separate laundry make this design perfect for families and visitors, or for downsizing in style.



Marahau

128m²

 3 Bedrooms  2 Bathrooms  1 Living area  Optional



This home is all about the clever use of space. The kitchen is centrally placed at the heart of the home with a large open plan living and dining on either side.

All the living spaces face ranch sliders and high clerestory windows which fill the area with light. An al-fresco outdoor area from the dining room makes for easy entertaining. The walk in pantry, which is tucked to the left of the kitchen, is a welcome addition for extra storage. Fabulous as a holiday home or a family home, the Marahau is bright and breezy.







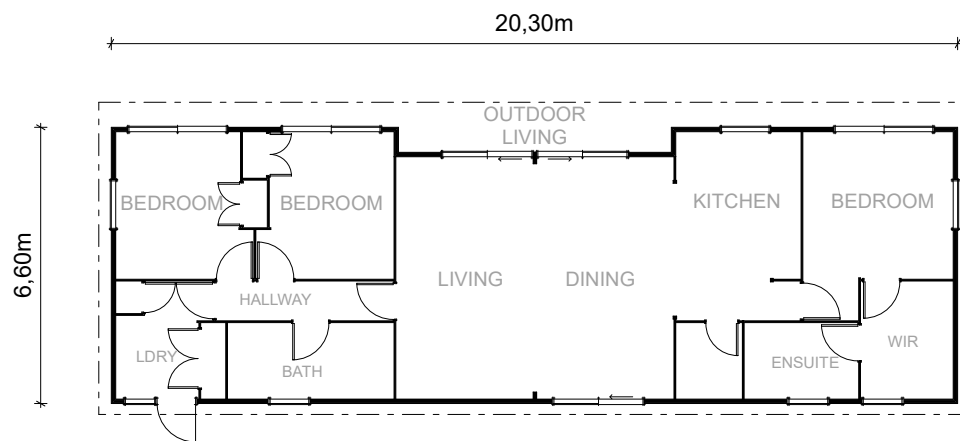




Lifestyler

131m²

 3 Bedrooms
  2 Bathrooms
  1 Living area
  Optional



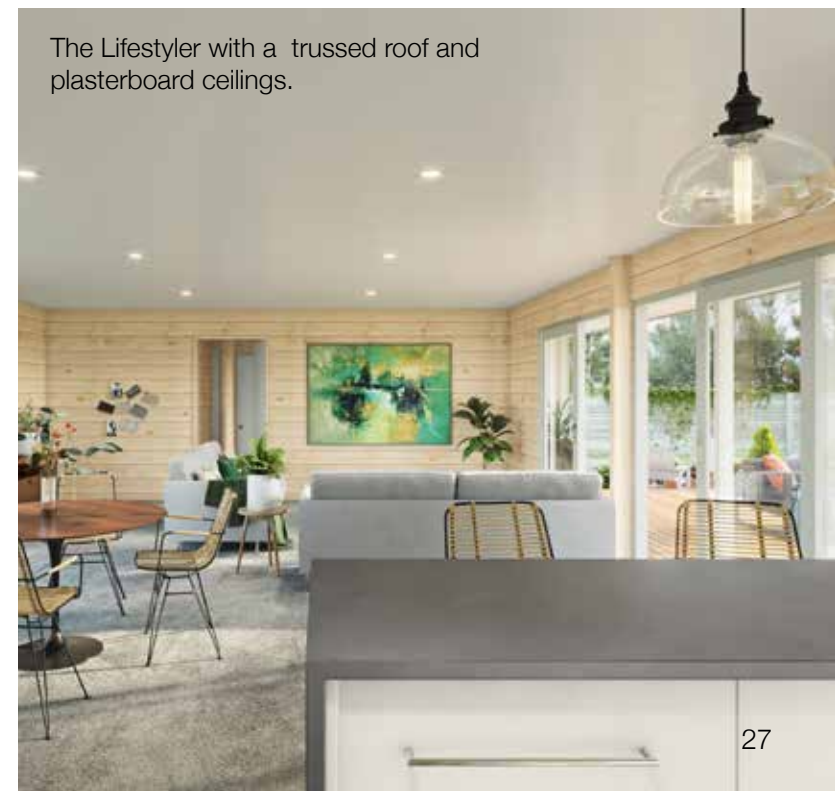
The Lifestyler design is the combination of a practical floor plan with stylish architectural details, creating a very liveable 3 bed, 2 bath modern home.

This home is designed with a monopitch roofline and the classic Lockwood styling of sarked timber ceilings, laminated beams and extra high joinery. There is also the option to choose a trussed gable roofline with plasterboard ceilings.

The Lifestyler show home in Rotorua features high sarked timber ceilings







The Lifestyler with a trussed roof and plasterboard ceilings.

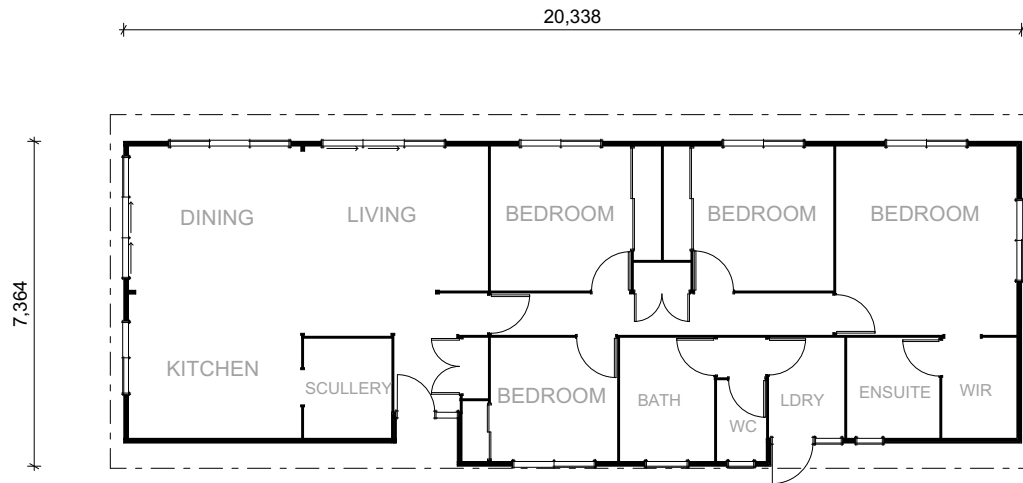




Riverview

142m²

 4 Bedrooms  2 Bathrooms  1 Living area  Optional



The four-bedroom Riverview packs a whole lot into a 142m² footprint, including generous bedrooms, two bathrooms, scullery and walk-in-wardrobe. Choose the classic Lockwood look with sarked timber ceilings, laminated beams and gable end windows, or a trussed gable roofline with plasterboard ceilings.





Acacia

148m²



3 Bedrooms



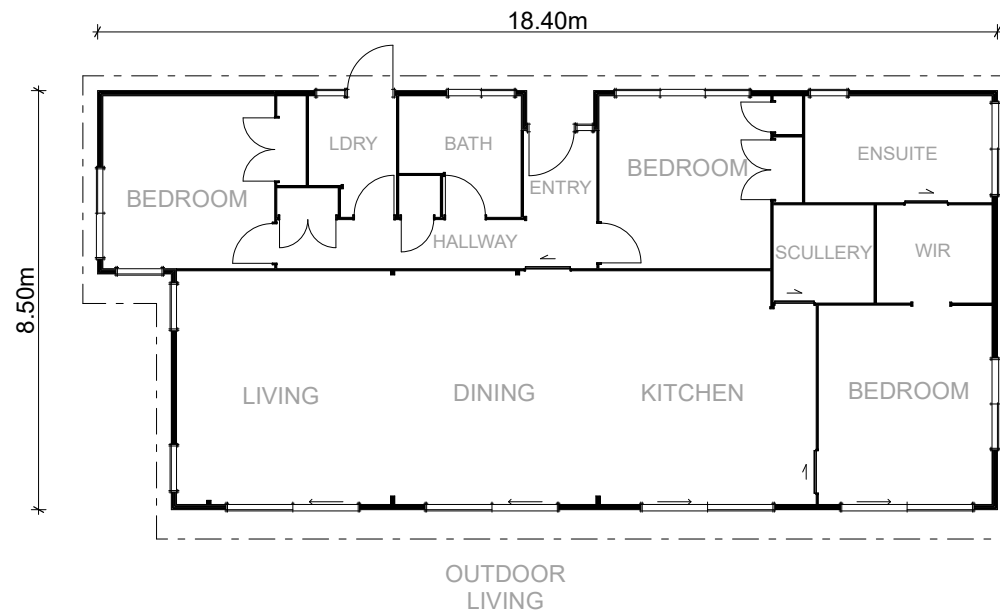
2 Bathrooms



1 Living area



Optional



The Acacia is a home of two halves. The kitchen with separate scullery, open plan living and master ensuite are found on one half with the other side comprising the entrance, main bathroom, laundry and two bedrooms. The master is a private oasis with a large ensuite and walk-through-robe.

This stunning home is an entertainers dream with sliding doors opening out from the large kitchen, dining and living areas. A large scullery makes dealing with the crowds a breeze.



Contact us to start your home building journey today!

Phone 0508 562 596 or +64 7 347 7691

Email info@lockwood.co.nz | lockwood.co.nz