



Lockwood VG Pine

Lockwood's VG Pine weatherboard is a unique engineered timber cladding solution that is durable and has excellent sustainability credentials, whilst retaining the beauty of natural timber.

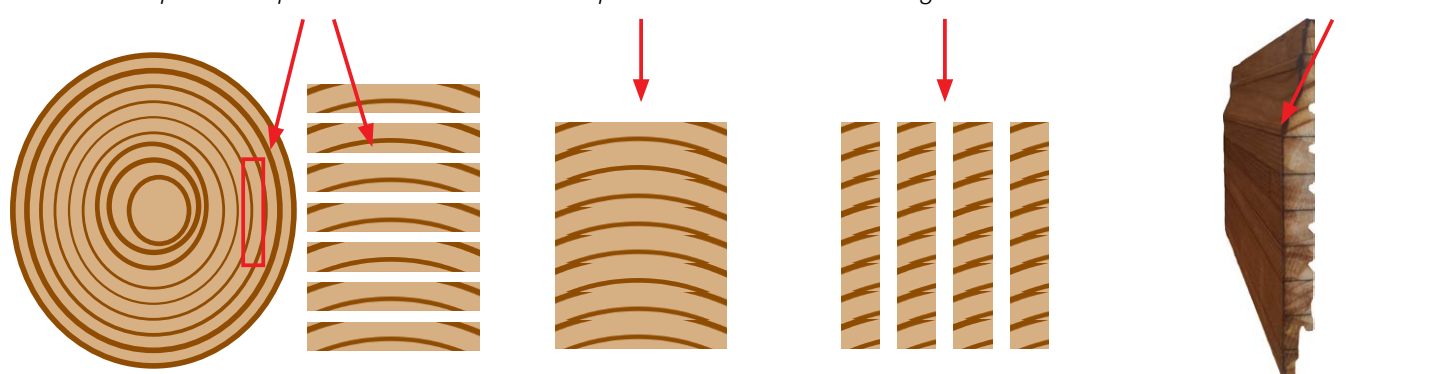
Pine is an excellent material for almost all components of a home, but when used as a weatherboard cladding, it can have some characteristics that are not ideal. Over time and exposure to harsh UV rays and weather conditions, traditional Pine weatherboards can show 'cupping' (where the edges of individual weatherboards cup out along the length of the board), and 'splitting'. Cupping and splitting is largely due to how timber is cut at the mill. Almost all Pine in NZ is cut as 'flat-sawn' timber. But for exterior weatherboard cladding, 'vertical grain' timber is considered a much better option. Vertical grain timber boards are much more stable than flat sawn timber. They are less permeable (so will take up less water), and therefore much more resistant to cupping and splitting.

200mm x 25mm "Flat Sawn" boards are cut from milled plantation pine

These boards are then laminated together into a square beam

Cuts are made down the beam to form strips of vertical grain timber

This timber is then cut into the shape of the Lockwood VG Pine Weatherboard



We used our knowledge in wood technology and our experience in wood manufacturing to develop the Lockwood VG Pine weatherboard. We laminate a stack of flat sawn timber boards into a roughly squared beam, then vertically rip the laminate beam into individual boards which are then machined into a weatherboard profile, as shown in the graphic above.

The weatherboard is then laminated to the outside face of a Lockwood exterior board to create a unique cladding solution engineered to be stable and sustainable whilst retaining the beauty of natural timber. Lockwood's engineered vertical grain pine can be painted or stained in a colour of your choice.

Talk to your local Lockwood Contractor about pricing to build your dream home today. Ph 0508 562 596 | www.lockwood.co.nz