

Pinevine

Contents

Fieldays Wrap Up	1
New suite of order documents.....	2
Arcadia show home in Bombay	3
Antonsen home close to completion.....	3
New Modified Hobson planned for Papamoa.....	4
FREE F&P Package Promotion \$15,400	5
Send your site safety sign pics and be in to win!	5
All hands on deck at Tuohy Homes in Plimmerton ...	6
Conference agenda	6
Hamilton Home of the Year - 1965.....	7
Did you miss this new home?	8
News from the Technical Department	9

Current Production Lead Times

Current lead times when placing a final order (all milestones met, order approved for production)

Replication Design with no changes allow 6-8 weeks

Non-complex or Complex designs up to 120m² please allow 7 – 9 weeks from approved for production date

Non-Complex Designs over 120m²-allow 9-10 weeks

For large / or complex designs please check with the production team for more accurate lead times.

Please remember it is essential that all orders are complete, with all signed documentation etc. in place.

Fieldays Wrap Up



Fieldays Wrap Up Cont...

Fieldays 2019 was another highly successful event showcasing Lockwood with the Arcadia show home. Again, we were nestled in with several other building companies showcasing everything from tiny homes, those awful container things, to full size homes.

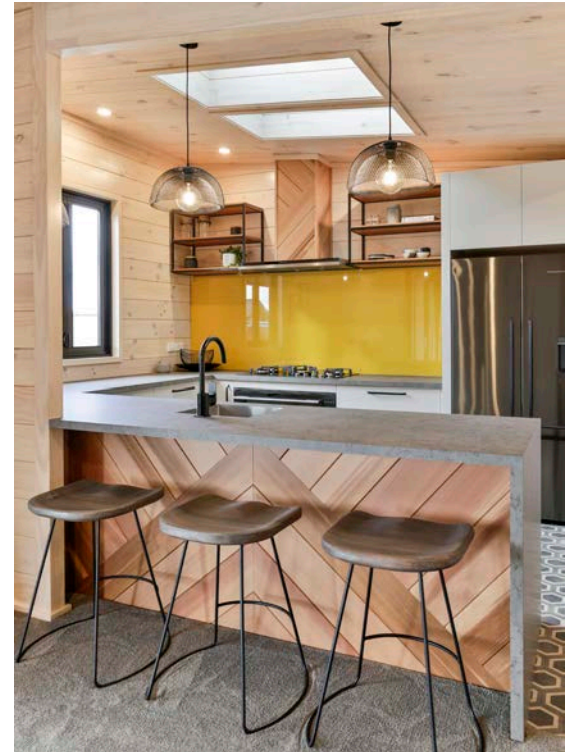
Last year, we absolutely dominated the competition with our high-spec offering. This year many companies stepped up their game in the quality of what they were showing but with the Arcadia show home Lockwood took it to another level. We looked smart, elegant, contemporary and classic.

Our experience at Fieldays has proven to be a most effective marketing strategy. The difference between attending events with a stand and presenting a full-scale show home is like night and day.

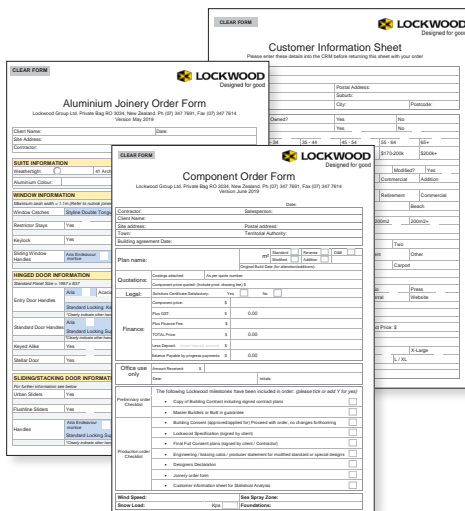
With a show home, people see for themselves the beauty and value of a modern Lockwood home. We don't get tangled up in fruitless discussions about square metre rates, or how their uncle built the first Lockwood in 1978 in Taihape. Rather, we had people imagining their lives living in their own Lockwood. Good conversations, great leads. Future sales.

We are committed to attending more events with full-sized show homes, and as well as planning on attending next year's Fieldays, we are aiming to also attend the Auckland Home Show.

Andrew La Grouw extends his thanks to Lockwood staff and contractors who helped run the show home. "A big thank you to all our staff who have worked so hard over the last couple of months getting the Arcadia ready. And a final big, big thank you to Dave Harker and Victoria Jessop who put so much care and effort into the Arcadia to make sure Lockwood was Best in Show."



New suite of order documents



New Lockwood Order forms have been created to assist the Contractors with the confidence they have the correct supply, and clarify the supply of components for our production team.

The forms follow the new format of the Quote form and are based on the Lockwood Specification. The Component Order Form was tested by staff and a mix of new and experienced contractors for ease of use and to ensure all relevant info was included.

The new forms are fully interactive so the information can be typed directly in. They are now available on the Extranet>Ordering>Lockwood Order Form and hard copies have been sent out to contractors.

The new forms will need to be used from the 1st of July for any orders placed.

Arcadia show home in Bombay



The Arcadia show home is now on its Bombay site, and will be ready for visitors in mid August.

Kieran and Jana Tod of JK Design Ltd, are very excited about the opportunity to promote this beautiful Lockwood home, which was also the show piece that we took to Fieldays 2019.

We have loaded the images under show homes on the website, with a coming soon to Auckland South banner.

We will keep you posted with progress on siteworks and landscaping as it nears its open date.

Antonsen home close to completion



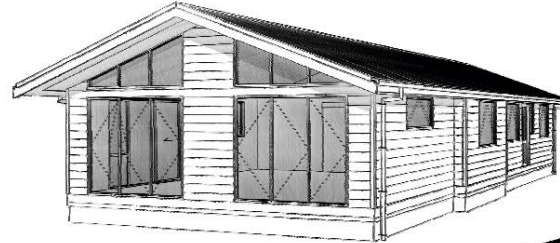
Soren and Nikki Antonsen, our Tauranga based contractors, are in the final stages of their new home build in Papamoa. They have their sights set on a move in date of mid July. There were quite a few people at Fieldays who commented on the lovely looking new show home being built on Bell Road that they were keen to get a look at, so it seems like there might be a few more visitors popping in than they were planning on!

Congratulations – it looks fabulous and we are sure Nikki’s interior design skills will have it looking gorgeous in no time.

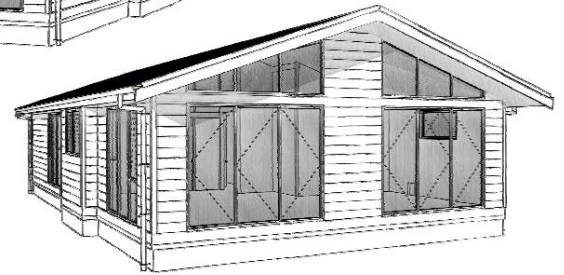
Well done Soren and Nikki, best of luck and many happy memories in your new Lockwood.

New Modified Hobson planned for Papamoa

Maximising their busy Bell Road site, Soren has put his plans through to council for a 120m² Modified Hobson, (name yet to be confirmed) as showhome that will complement the office and their own home on the site.

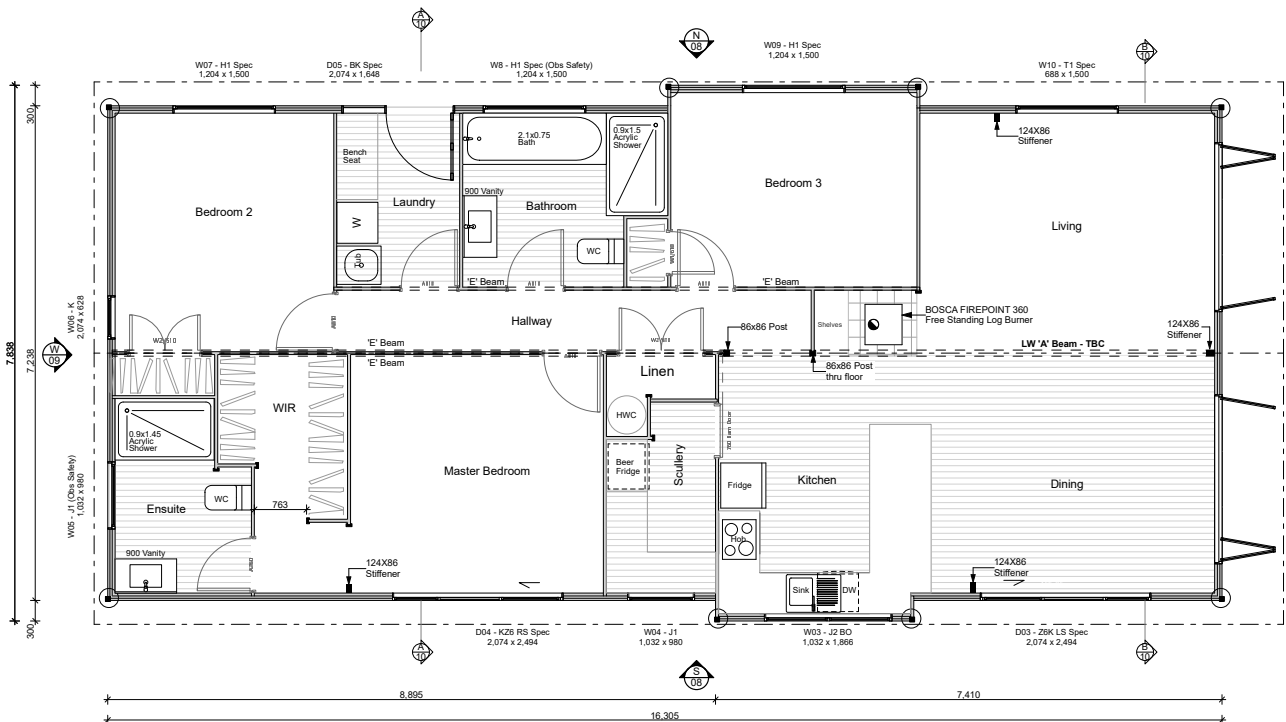


The inclusion of a good sized scullery, large showers, great open spaces and stunning gabled end windows and sliders in this 3 bed – 16.3 x 7.2 home, will be making it a popular stop for many on the look-out for a modern small family home. The floor plans and elevations have been shared with you here.



We will keep you up to date as we hear more from Seaside Homes – Lockwood Tauranga.

Looks like it will Bell Road will be a busy stop-over point for Lockwood lovers in the near future!





FREE F&P Package Promotion \$15,400

The **BUILT-ON-SITE** only offer for the Arcadia of a free appliance package valued at \$15,000 is running until the end of September.

The t's and c's can be found at lockwood.co.nz/terms and we are promoting in our newsletters, on social, CRM databases, and in a few of the local contractors territories already.

Contact marketing to update your local radio campaigns or prepare other advertising for you in order to generate interest and encourage potential clients to get in touch.

Send your site safety sign pics and be in to win!

Remember to send us your site safety sign pics and be in to win this awesome craft beer hamper for your team!

Those that have received their loadouts over the last couple of months will have been receiving their new site safety signs.

Please don't forget that we have an awesome craft beer tool box up for grabs every month for the winning contractor who gets their pics back to us of their signs in place.

Marketing are waiting for your pics and have a tool box ready for the first team to share theirs with us. Send them to sarahsmith@lockwood.co.nz or victoriajessop@lockwood.co.nz.

Obviously, if you and the team are also rocking the brand and looking super awesome in your gear this will count for points!

We look forward to sharing your pics with the staff and network.



All hands on deck at Tuohy Homes in Plimmerton

Brent Tuohy and his building team are moving along swiftly with the construction of their show home, the Alfresco.

Tuohy Homes are excited about bringing their 127m², 3 bed design and build show home to the Wellington area, as are we to market what will be a popular plan. Their previous Ruapehu design was a show stopper and quality builds are what they have built their reputation on.

A spring opening is planned – go well Brent and team, we can’t wait to see the finished product.



Conference agenda

The conference agenda has been included on the Extranet>Marketing>Conference 2019 for your reference. Don't forget to secure your bookings for those of you that have yet to confirm.

ITM and Carter's points can be used against conference booking costs

- details below. Please let either Vicki or Sarah know if you want to use them. Thanks to Andrew for organising that for the network.



Using Carters Advantage Points

Indicate you want to use Carters Advantage trade

points when registering for conference. You will also need to supply your Carters Trade Account number.

Lockwood will invoice you c/o Extra Mile Company Limited, with your Carters Trade account number as reference.

You forward the invoice to info@cartersadvantage.co.nz and request it to be paid using trade points. Extra Mile Company will pay Lockwood directly.



Using ITM Trade Club Points

Indicate you want to use ITM Trade Club points when registering for conference. You will also need to

supply ITM trade account number.

Lockwood will invoice you c/o Incentive Motivation Limited, with your ITM trade account number as reference.

You call the Trade Club Awards Centre 0800 888 246 to arrange payment. Incentive Motivation Limited will pay Lockwood directly.

Hamilton Home of the Year - 1965



This gorgeous Lockwood was built in 1965 and was Hamilton's house of the year!

It is in the countryside in Matangi district about 5 km from Hamilton City, sitting proudly on 11 acres.

The exterior is in great condition and has been well looked after. About two years ago, Peter Brooky's painter re-did the exterior paintwork but no signs of delamination were present.

The interior is as it was when built in '65. The timber kitchen has been given new engineered stone tops, but the units remain original. The sunroom is a later development and the garage is also full Lockwood.

Peter has done some renovation work by removing the toilet and shower walls to open up the space creating one big modern bathroom and was delighted to report that after all those years, there was no sign of any rot, it was just a strip out and renovate for the upgrade.

Thanks for sharing Peter, she's got good bones alright!





Did you miss this new home?

This is the latest home to be [loaded up on the website under Bespoke Homes](#). Peter Brooky of Excelsior Residential built for these clients, Ken and Faye Bax about two years ago. Their home is on Shakespeare Street in Cambridge overlooking the Waikato River and takes in views of both bridges.

There basic floor plan, gallery and story was loaded up to bespoke homes recently and shared with our Lifestyles readers, as well as on our social channels.

We ran a competition to see what people enjoyed about the home and it was the open plan, and abundance of light that had them commenting in the hundreds!

This is a home specifically designed for Ken who is disabled and he couldn't be more thrilled with how it exceeds his needs.



News from the Technical Department

Door Leaf Size.

We have changed the door leaf size for the Lockwood interior doors. We will now be supplying 2030mm interior doors where applicable. This saves the builders cutting into the wall board door (lintel), the builders are now only required to remove the bottom tongue to the door opening. This is effective immediately.

Detail Updates

Please check the new update listing for current detail changes June 2019.

Technical>Manuals>Update Listing>June 2019

The actual updated details are available in PDF on Extranet>manuals>107mm

New Glue

For many reasons including aesthetics and health and safety issues we are making a change to our Glue type and supply. The new glue is called Purbond, this is a Polyurethane adhesive to be used in both external and internal situations. The new glue Purbond has improved performance and as a bonus is clear so no red glue lines to exterior laminate. We are currently working through the details, and are looking forward to implementing the change.

New Forms

Contractors would have received hard copies of both the new Lockwood order form and the FIR form . Work is ongoing to update and standardise all forms and documentations

Further Information Required: FIR

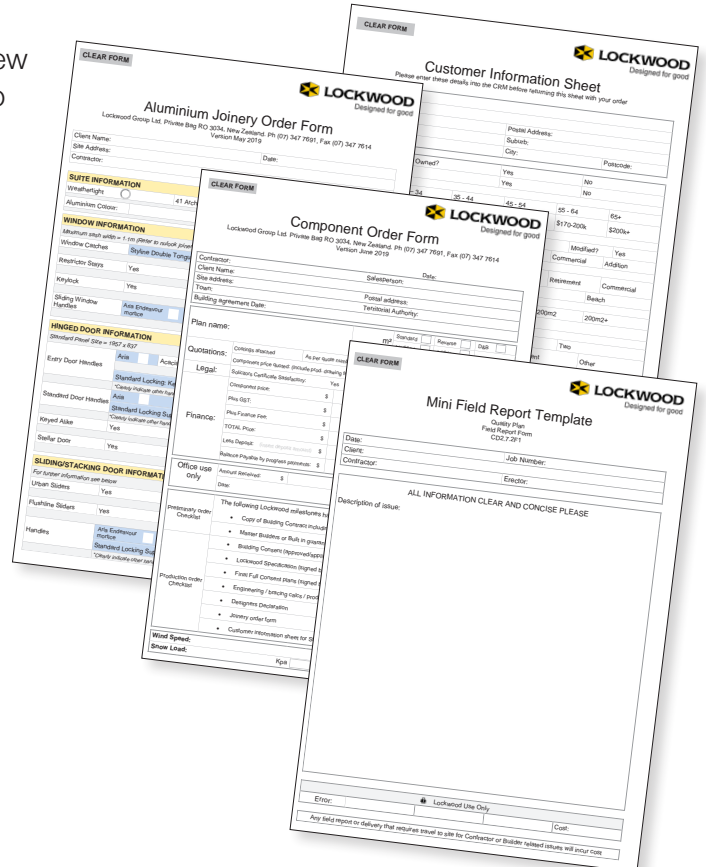
At the Lockwood "Approved for Production" stage, where we process your order and confirm production dates, we have been experiencing an increase in defective information in the Lockwood Order content. To assist us to ensure that what we produce is exactly what is required, we have developed a FIR form – Further Information Required which will be sent back to contractors with requested details .

Mini Field Report:

There is a new Mini Field report form which is interactive. This form is now available on the Extranet>Technical>Field reports

New Lockwood Order Form:

The Lockwood Order form including the Aluminium Joinery and Customer info sheet have been updated and must be used for any orders going forward. You can download the updated form from Extranet>Ordering>Lockwood Order Form.



The image displays four overlapping forms from the Lockwood company, all featuring the 'LOCKWOOD Designed for good' logo. The forms are:

- Aluminium Joinery Order Form:** Includes fields for Client Name, Site Address, and Date. It has sections for 'SUITE INFORMATION', 'WINDOW INFORMATION', 'FRAMED DOOR INFORMATION', and 'SLIDING STACKING DOOR INFORMATION'.
- Customer Information Sheet:** Requests details like Postal Address, Suburb, City, and Postcode. It also includes a 'Checked?' section with 'Yes' and 'No' options.
- Component Order Form:** Contains fields for Contractor, Client Name, Site Address, and Date. It includes a 'Plan name:' field and a 'Questions:' section with checkboxes for 'Complete manual', 'Business Certificate', 'Business Insurance', 'Legal', and 'Plumbing'.
- Mini Field Report Template:** A form for reporting issues, with fields for Date, Class, Contractor, Job Number, and a large 'Description of issue:' area. It includes a note: 'ALL INFORMATION CLEAR AND CONCISE PLEASE'.