

Pinevine

Welcome new staff



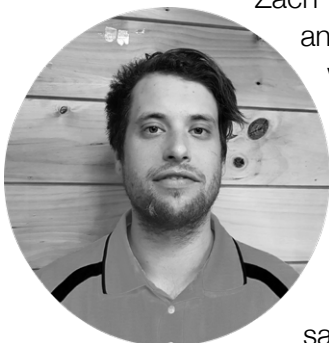
Dylan Waitemata steps into a supervisory role. Dylan will now be supervising all joinery operations from the 1st of November. His role will include V6 estimation, design and ordering, as well as research and development. He will also be dealing with joinery issues (Mini Field Reports etc.) and manufacturing quality control. He will also be tasked to keep our network updated on any new legislation or standards

that will affect the joinery we manufacture. Dylan has been working alongside Te Iriwhiro for the last 3 years and has gained a tremendous amount of practical knowledge and joinery skills.

Lloyd Akroyd has recently joined Scott in the design department here at Lockwood Head Office. Lloyd is a Rotorua local and comes from a diverse background, from the Arts to Industry. Locally renowned as a musician, Lloyd also has a wealth of experience designing residential and commercial buildings. Creatively driven and passionate about innovative design and design solutions, he is excited to work with contractors and clients looking for a bespoke solution for their build.



Zach Watson has joined us as our new Health and Safety representative, he takes off from where Dylan has left. Zach will also be trained in the use of V6 Joinery software. Zach's previous employment saw him working for a reputable Venison Processing Plant, where he worked for 7 years. His abundance of fingers demonstrate that he was either very safety conscious in his role, or very lucky!



We're certain that his enthusiasm and charm will make a great addition to the team.

Welcome new staff	1
Acacia Show Home soon to open in Taupo	2
Japan and Micronesia	4
New Lockwood Units for Tekapo	6
Canterbury Ag Show, Christchurch	8
News from the Technical Department	9

Current Production Lead Times

Current lead times when placing a final order (all milestones met, order approved for production)

Non-complex design please allow 7 – 10 weeks from approved for production date

For large / or complex designs please check with the production team for more accurate lead times.

Please remember it is essential that all orders are complete, with all signed documentation etc. in place.



Acacia Show Home soon to open in Taupo

Fit out is well underway for Peter Richard's new Acacia show home in Taupo. The Lockwood Design Studio team at Lockwood Group in Rotorua worked with Peter to design the perfect architectural solution for his Woodward Street site, ending up with a home of two distinct halves. Two spacious bedrooms, separate laundry and main bathroom form the back half of the home. The large open plan living, dining, kitchen, scullery and master bedroom with WIR and en-suite form the front.

The up-spec show home is packed with interesting features. The main en-suite is particularly striking including a 200kg black stand alone stone bath with contrasting tiles and a feature window to an enclosed garden. A three sided glass fireplace makes a statement in the living area with generous built in bench seats either side offering the perfect place to wind down.

Peter and his interiors consultant, Nadine Sobeh, have worked hard to showcase the design possibilities in a contemporary Lockwood home.



Acacia Show Home soon to open in Taupo cont.



Potential clients will be able to see a range of finishes, with the living and kitchen area walls painted in a soft greige and the beams painted in a contrasting white. The sarked ceilings, second and third bedrooms have been beautifully blonded with painted wardrobes and architraves in white.

Peter used Textura Black joinery and corner profiles which contrast beautifully with the silver star satin wall colour.

A bright orange “Lobster Satin” door is a welcoming focal point at the back entry which is connected to the office by a floating walkway.

Plans are underway for a soft opening to the general public from the 20th December with a special VIP night planned for the 18th January.

This upmarket home is sure to be a show-stopper and we are excited to have it available, not only for Peter’s area but the wider network to demonstrate the design and fit-out possibilities in a modern Lockwood.





Japan and Micronesia

Recently Andrew visited Japan and Micronesia, to reconnect with exiting clients and discuss new opportunities for Lockwood Exports.

He stopped in at the Motherdome, an iconic 1990's commercial project, in Kimitsu, North of Tokyo. The dome forms part of a living demonstration farm experience called Mother Farm which has been popular with city dwellers for over 30 years. The owner of Mother Farm visited NZ and was very impressed with the success which farm shows enjoy here especially with Asian visitors who have very little contact with farm animals and operations in their own countries. A number of Lockwood buildings were commissioned for the site, additional to the 1800m² geodesic dome. Over 20 years on, the Lockwood buildings are still in use and standing strong.



Japan and Micronesia cont.



Andrew also visited the latest LDS build completed in Pohnpei. While in Micronesia he took the opportunity to visit Lockwood buildings in other parts of the remote islands. He was very impressed at how the buildings had performed through major weather events and extreme conditions, particularly in Chuuk, one of the wettest and most humid parts of the world. Many other building on the islands had been badly affected by termites, but the Lockwood buildings were unaffected and still in great condition.



This one bedroom Lockwood cottage is located on the tiny island of Romanum



New Lockwood Units for Tekapo

The first project from the Lockwood Design Studio has recently been completed in Tekapo. This commercial project involved designing and building six units for Lake Tekapo Motels and Holiday Park to extend their current offering of accommodation on the shores of Lake Tekapo, near the Tekapo Springs. Five of the units have a queen room and two bunk rooms, sleeping eight people in the 66.45m² space. The sixth unit is an 30m² accessible studio with ensuite.

One of the challenges with the design was the location of the holiday park within in the Aoraki Mackenzie International Dark Sky Reserve, limiting light pollution for stargazing purposes. Tiny LED lights installed under the eaves and clever bedside lights were installed in the bunks for this reason. The design team also had to get compliance for the built-in Lockwood bunk beds, which, due to the commercial nature of the build, had to comply with AS/NZS4220:2010.

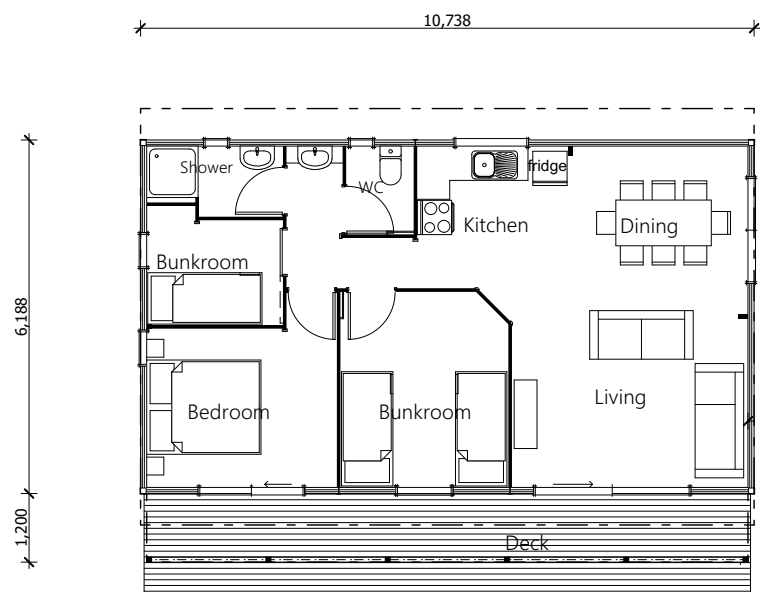


New Lockwood Units for Tekapo cont.



The units are staggered on the site, affording stunning views over Lake Tekapo to each one. Clad in VG pine with dark roofs, they blend in beautifully with the natural landscape. Local contractors were engaged for the build, project managed by Michael Whyte from Lockwood Nelson and Dave Harker from Lockwood Head Office. The build went smoothly, despite the remote location and some very cold days where the team had to clear snow and ice before getting stuck in!

The units have been very popular so far. After being advertised on Booking.com, they are now sold out until February 2019. The owners of the Lake Tekapo Motels and Holiday Park were very impressed with the Lockwood design and build process and are delighted with the outcome. Well done to all involved.



66.45m² "Kiwi Bach" unit, one of five now available at Lake Tekapo Motel and Holiday Park. This three bedroom kiwi bach is warm, spacious and well equipped with full cooking facilities as well as its own BBQ. Each kiwi bach has a queen bedroom, one set of bunks in one bedroom and two sets of bunks in the other bedroom, one bathroom with separate toilet and shower.



Canterbury Ag Show, Christchurch

The Canterbury Agricultural Show was held 14th to 16th November as part of Cup and Show week in Christchurch. The Lockwood South Island Regional Office ladies, Rachel and Karen, along with Bryan Riach from the North Island Sales Office with support from the Local Contractors, Lightning Homes and Develico Homes pulled together to give Lockwood a strong presence at the show. We used our new big double marquee and Lightning Home's mobile display home to give visitors a taste of the Lockwood Experience. The weather was great, the team had fabulous feedback and were able to connect with new and existing clients from around the South Island. The show is well attended by a widespread farming and equestrian communities as well as being accessible to Christchurch residents. Thanks to everybody involved for their hard work at the show, we look forward to seeing the results of your efforts.



News from the Technical Department

Designers Note

Short walls vs tie rod and power holes

Please be aware of the placement electrical fixtures on short walls. Rule of thumb; 2 holes per 200mm of clear space is the maximum specification for pre-cut wall fabrication.

Safety from falling

If an opening window sill is less than 800mm from the floor and more than 1m from the ground level please mark joinery schedule for that frame as either toughened glass or to be fitted with restrictor stays.

Remember to specify any crucial placement of joinery / wall stiffeners / electrical fittings on the final consent floor plans.



Designs by Lockwood

Martin has produced an indicative pricelist for the Design by Lockwood Homes shown on the website. These have been priced in full Lockwood, based on the simple floor plans on the website, no allowance has been made for any engineer's requirements as per our standard pricing. If you need assistance with these please contact us.

Tinted Glass

Due to Metro glass warranty issues, in regard to Thermal Fracture, we will now be supplying toughened glass to all tinted panels. In the meantime, Martin will adjust the extra cost at quote stage.

Aluminium Board Lengths

Due to the change in the exterior corner detail, we have altered our Extruded Aluminium Sheathing length to 6350mm, to allow for the lap in Aluminium, the 107mm Board is still only available in 6250mm. However, if you want to order 19mm Timber backed Alum Weatherboard you can now order these in 6350mm lengths. For clarification we will state the maximum lengths on the Sundry Pricelist.

News from the Technical Department cont.



Joinery Suite Brochure.

We have created a simple guide to the use of the joinery suites that we have available.

It shows the max size panels, weights and what each suite offers as far as Sliders etc. It also has our standard hardware and some glazing options. It is just a quick reference when designing a Lockwood Home.

This is on the Extranet-Ordering and under Design and hard copies are available on request.

Technical Updates

Please see Technical updates on the Extranet: Technical>Technical Updates.

008-18 We are now detailing Building wrap behind our flashing baseboard as a secondary barrier for moisture.

009-18 We have removed the woolpile from the B inner when in an exposure kit as it is not required.

004-18-Tierod tension brackets-these brackets are now in stock and will be sent with your loadout if applicable.

Please check out Detail 10-05-107-it has a note added for the builder to remove 3mm x100mm off the tongue to allow for the headflashing to fit on a VGPine or Cedar home

We are offering Thermakaft 101 Vapour Shield as a sundry item. If you require it on your loadout please order through Chris Dibley prior to your loadout. Pricing is available on the Extranet-Sundry Pricelist

Extranet Updates

Please see Technical updates on the Extranet: Technical>Technical Updates.

New Quote Form: Pricing>Quote Estimate Form V8.Pricing

New updated detail manuals, including the Update Listing: Technical>Manuals

New Preliminary Order Form: Ordering

Sundry Order Form: Ordering

We want to hear from you!

If you have any news, events, successes or challenges you would like to share with the network, please get in touch with Sarah (sarahsmith@lockwood.co.nz) so your stories can be included in the next issue.

A link to the Pinevine edition is available in .pdf version on the Extranet under Pinevine. Printed versions will be circulated to staff and mailed out to the network. If any of your staff would like to be added to the mailing list, let Sarah know.