

# Cottages to Cosy Lifestyle

Customisable plan ideas to inspire your new home journey





# Table of Contents

About Lockwood.....	4
Your Home Building Journey .....	4
The Lockwood System.....	5
Resilience .....	6
Sustainability .....	6
Benefits of Solid Timber.....	7
Small to Medium Sized Home Designs .....	8
Lakeview .....70m <sup>2</sup> .....	9
Papai.....79m <sup>2</sup> .....	10
Nelson.....103m <sup>2</sup> .....	13
Kōpuha.....110m <sup>2</sup> .....	14
Parawai .....111m <sup>2</sup> .....	16
Stewart.....112m <sup>2</sup> .....	19
Skagen.....125m <sup>2</sup> .....	21
Te Rakau .....125m <sup>2</sup> .....	23
Verandah .....128m <sup>2</sup> .....	25
Marahau .....128m <sup>2</sup> .....	26
Arcadia.....131m <sup>2</sup> .....	29
Acacia .....148m <sup>2</sup> .....	30



We're proud to  
be consistently  
voted one of  
New Zealand's  
Most Trusted  
Home Building  
Brands



# About Lockwood

Lockwood has a reputation for building beautiful homes of outstanding quality and structural integrity. Over the years the company has continually refined its products with technical innovations and contemporary architectural design.

Since 1951, we have been designing and developing concept plans for clients in New Zealand and around the world. Around the world more than 50,000 homes have been built using Lockwood's unique system of timber boards that are locked together with aluminium x-profiles.

Our construction system has been refined and proven by our history and our commitment to consistency and quality. Lockwood homes can be built quickly, and are certified by CodeMark.

When you decide to build a Lockwood home you join the Lockwood family. From the designers and engineers, to the skilled craftsmen, to the Building Contractors; everyone has a strong sense of pride and commitment to the final outcome – your new home!

## Your Home Building Journey

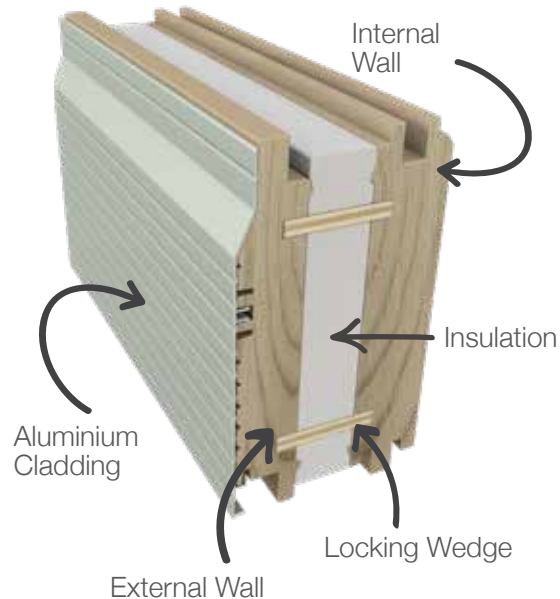
The possibilities are endless when you work with Lockwood to design and build your dream home. We'll work with you through all stages to plan, design and build the perfect home to fit your lifestyle and budget, taking into account your site and your specific needs, whether you're building a grand design, a family home, or a downsized retirement dwelling

In this brochure you will find a collection of twelve of our most popular plans for small to medium sized homes to inspire you on your home building journey.

Many of our clients take inspiration from our vast range of concepts and built homes then work with our designers to individually tailor the plan to fit their needs. Each of the designs shown in this book are fully customisable and we'll work with you to ensure your new home is everything you dreamed it to be!



# The Lockwood System



## External Insulated Board

The Lockwood 107mm external insulated wall system has been rated with an R-Value of 2.1.

This rating is achieved with the use of a foam insulation which has been pressed between solid timber wall components.

With minimal connection between the internal and external elements, there is little heat loss in the building envelope.

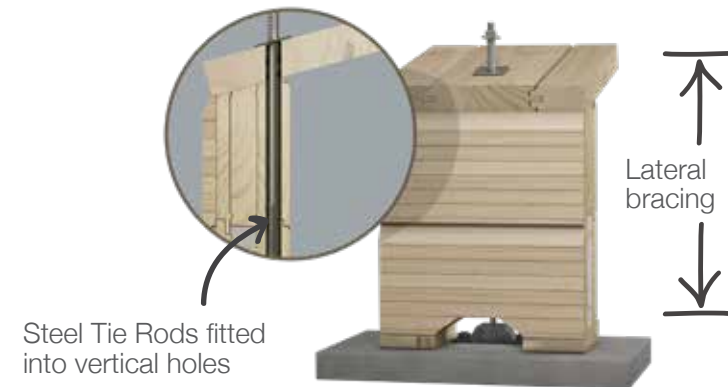
## Patented X-Profile

The Lockwood building system is unique. Solid timber boards and aluminium profiles are locked together by our patented x-profiles rather than nails. The result is a strong resilient building system.



## Vertical Tie Rod

Lockwood homes are braced against extreme weather events and earthquakes by tie rods. The steel tie rods are installed into the pre-drilled internal and external walls.



## Low Maintenance, High Durability



Our advanced extruded aluminium sheathing is coated with coloured polyester resin which provides a long-lasting finish. Mechanically pressed onto the engineered profile of the exterior boards, the aluminium cladding looks good for years, and means Lockwood buildings don't need frequent painting.

# Resilience

Lockwood homes have the advantage of being strong and resilient, designed to withstand earthquakes, cyclones and powerful winds. Our beams, posts and exterior walls are laminated for structural strength, absorbing movement and avoiding distortion.

A standard Lockwood home was subjected to 22 simulated earthquakes of up to 7.0 on the Richter scale over six weeks of laboratory testing and survived completely undamaged. The windows still opened freely and the glass remained intact.

Lockwood's ability to stand strong was evidenced by the performance of Lockwood homes in Christchurch and more recently in Kaikoura. Minimal damage was reported with no Lockwood homes requiring structural repairs.

More recent proof our system's durability was evidenced by Lockwood homes and buildings standing strong during hurricane Michael in Florida and typhoon Mangkhut in Micronesia.

# Sustainability

Lockwood builds homes that are healthy and comfortable for those who live in them but at the same time, are good for the wider community and the environment.

Lockwood homes are constructed using sustainably sourced plantation pine. Wood is the Earth's most renewable raw material and using it is vital in the fight against climate change. Not only does wood take less energy to produce, it also releases less CO<sub>2</sub>, than other building materials (such as steel and concrete) during manufacture. Your Lockwood home can save around 4 tons of carbon dioxide, equal to the emissions of driving 22,000 km!

Building with timber ensures Lockwood homes are durable, strong, warm and dry. The use of local materials also supports the local economy and the many people employed in the forestry sector as well as minimising transport emissions.

# Benefits of Solid Timber

Lockwood's solid timber building system offers advantages in thermal comfort and control, indoor air quality and heating and cooling efficiency.

Lincoln University conducted studies in 2007 which showed solid wood provides up to 2.5 times the thermal mass of concrete meaning solid timber homes are better at absorbing and storing heat than conventional buildings. A Lockwood home automatically evens out variations between outdoor and indoor conditions, naturally absorbing heat when temperatures rise and releasing it as temperatures fall. Our exterior walls are comprised of a tight sandwich of solid timber and insulation which exceeds the NZBC energy efficiency requirements for solid timber homes by 50%.

Solid timber regulates humidity, avoiding build-up of bacteria, viruses, fungi and mites, minimising respiratory infections and asthma. The warm glow of finished timber goes beyond aesthetic appeal; it's been credited with physiological and psychological benefits that mimic the effects of spending time in nature, such as lowered blood pressure and heart rate, reducing stress and anxiety, and increasing positive social interactions.

In short, living in a Lockwood home is good for you - and the environment!






Lakeview 70m<sup>2</sup>

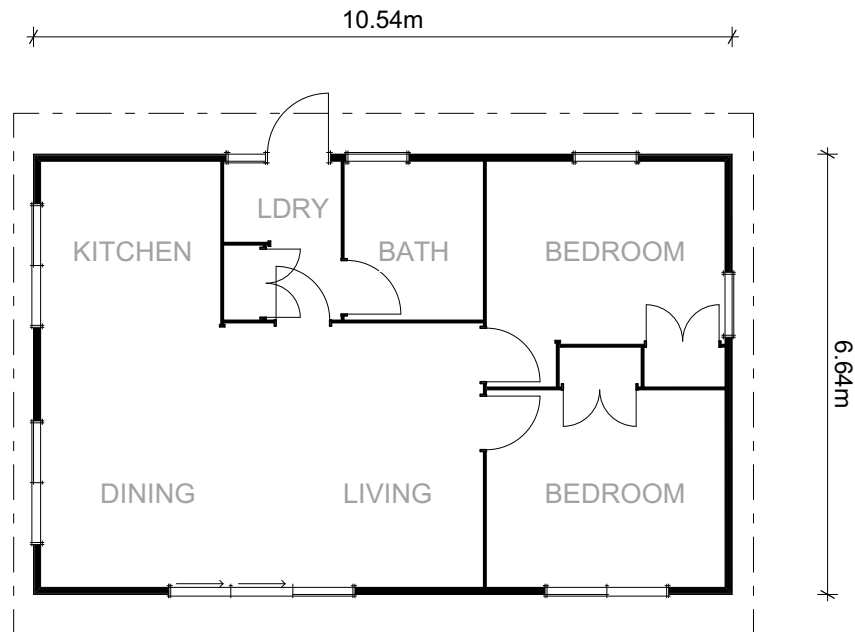




# Lakeview

70m<sup>2</sup>

 2 Bedrooms  1 Bathrooms  1 Living area  Optional



Mountain view, sea view, garden view? Whatever your outlook, this surprisingly spacious small home exudes warmth and character and will perfectly suit any scene.

The Lakeview is modern and inviting, with spaces made airy and restful with the stylish use of high sarked timber ceilings and extra height joinery.

This home works equally well as a second dwelling, for first time home buyers or for bringing older family members closer to home whilst maintaining their independence.

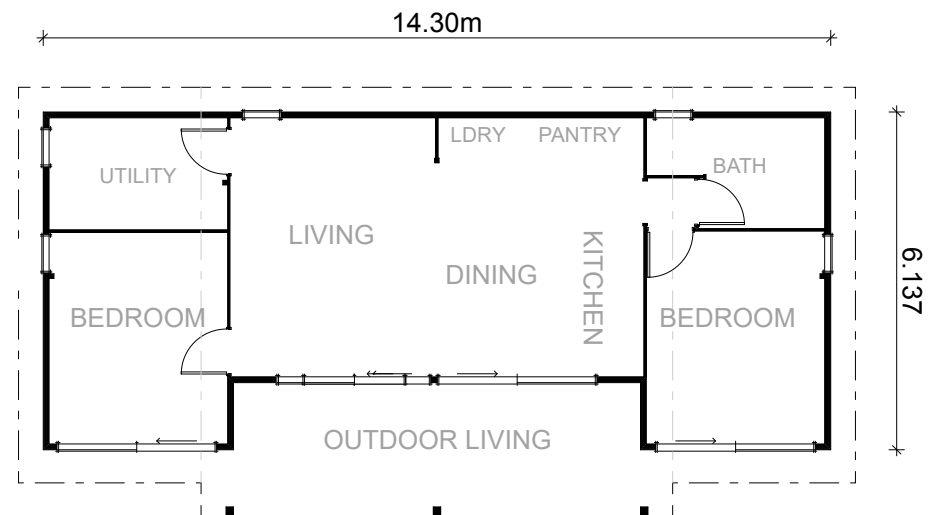




# Papai

79m<sup>2</sup>

 2+ Bedrooms
  1 Bathrooms
  1 Living area
  Optional



Outdoor living is at the heart of this compact design making it a perfect beach house or holiday home. The Papai has two bedrooms both with generous wardrobe space and a utility room that could be used as a small third bedroom or hobby room. The kitchen, dining and living area feature open plan living.

The entire front of the home has been designed to maximise light and a feeling of spaciousness with extensive use of extra height joinery. A pop up central area and extended eave add an interesting feature to the high raking monopitched roofline. The clever kitchen and laundry area has been designed to disappear behind cabinetry leaving clean pared back spaces in a modern finish.





Papai 79m<sup>2</sup>









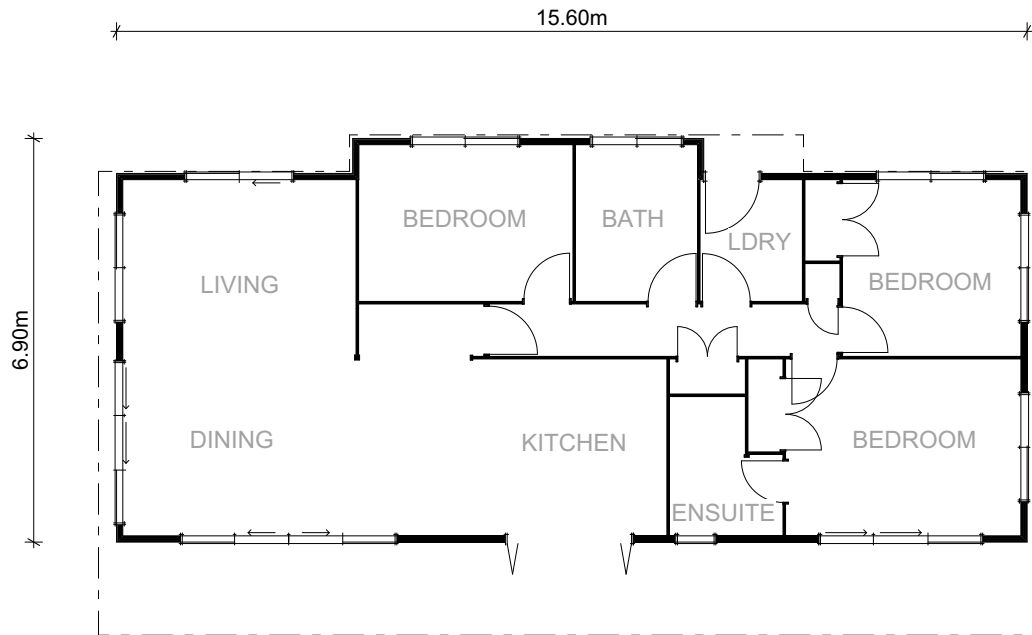
Nelson 102m<sup>2</sup>



# Nelson

103m<sup>2</sup>

 3 Bedrooms  2 Bathrooms  1 Living area  Optional



With cleverly designed spaces on a compact footprint, the iconic Nelson has been a constant favourite no matter the location.

Modern adaptations to the plan have refined the design which is now perfect for quality family living on a small footprint. The deck runs the length of the home and creates that all important indoor-outdoor flow required in a contemporary design.

Kitchen bi-fold windows open onto the deck making al fresco dining an easy option also adding an element of interest under the wide eaves. The ensuite and main bedroom are generously proportioned.



# Kōpuha

110m<sup>2</sup>



3 Bedrooms



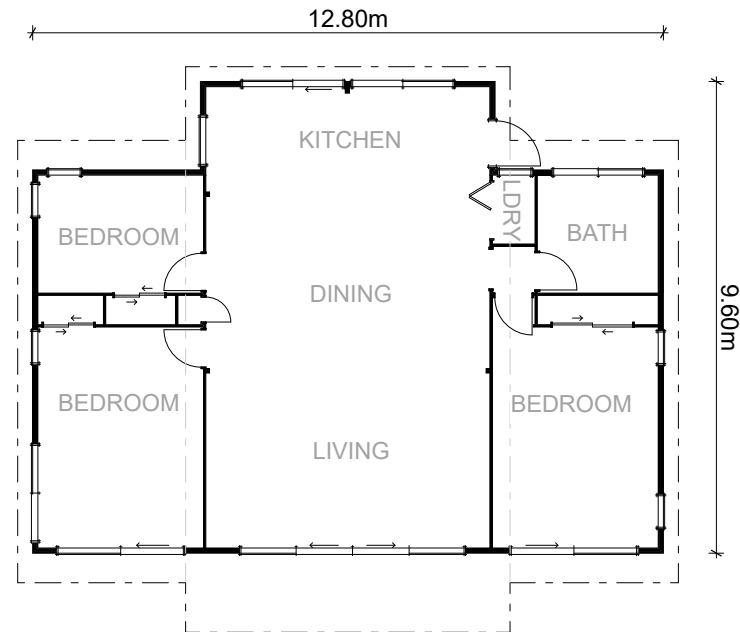
1 Bathroom



1 Living area



Optional



The Kōpuha features a spacious central open plan living, dining and kitchen. This is offset well by an eye catching fireplace and display unit which has been painted as a feature wall to compliment the blonded timber interior.

Full width landscape windows in the kitchen area work seamlessly with the lofty timber ceilings and skylights to bathe this central space in light.

In typical Lockwood style, striking laminated timber beams draw the eye upwards and outwards to the high clerestory windows. The popped up central area and extended eaves cleverly blend the indoor-outdoor living spaces and add an edgy element to the otherwise simple monopitch of the roofline.



Kōpuha 110m<sup>2</sup>



# Parawai

111m<sup>2</sup>



3 Bedrooms



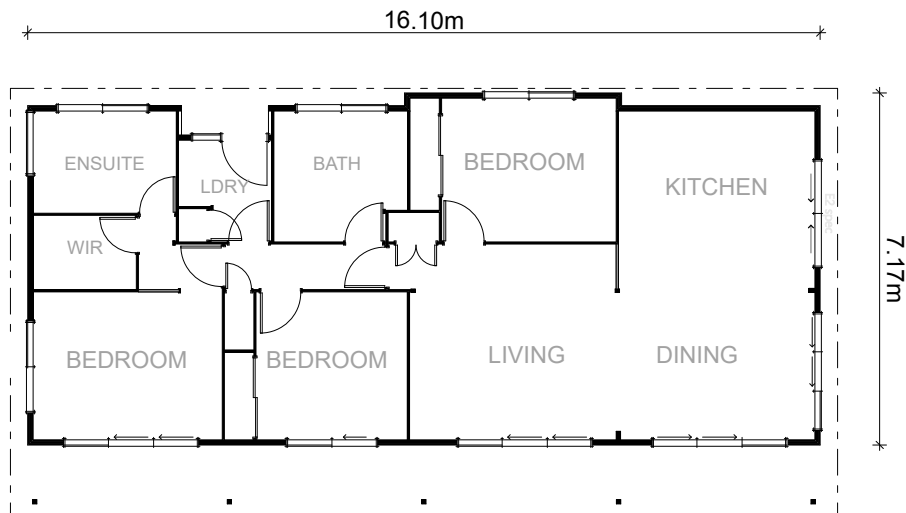
2 Bathrooms



1 Living area



Optional



The Lockwood Parawai is perfect for family holidays, entertaining or living in modern comfort. The contemporary monopitched roofline is a variation on the traditional gable, and the vaulted high ceiling adds volume to the interior spaces.

The separate laundry and large family bathroom makes for easy living when the crowds come to stay. With large sliding doors from most rooms, the Parawai is designed with excellent indoor-outdoor flow.







Parawai 111m<sup>2</sup>







Stewart 112m<sup>2</sup>

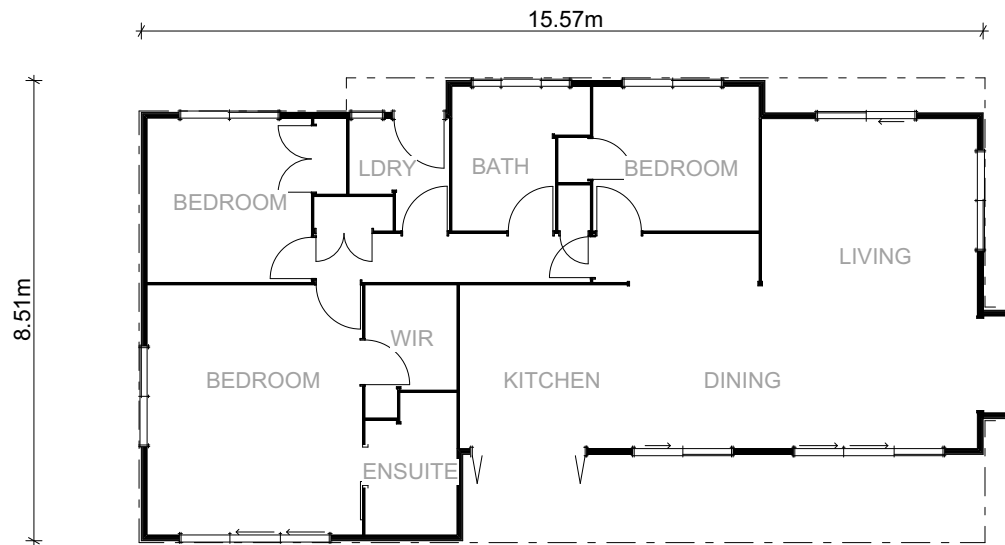




# Stewart

112m<sup>2</sup>

 3 Bedrooms  2 Bathrooms  1 Living area  Optional



The Stewart is ever popular as a compact and efficient small home. It features extra-wide bifold kitchen windows, used as a serving hatch for access to the deck. The generous kitchen is well equipped for family life. Large sliding doors provide a seamless indoor-outdoor connection and a stone fireplace feature wall creates a point of interest in the lounge.

The three double bedrooms are light and airy. The large master bedroom has a pleasant open feel about it and includes a WIR and ensuite.







Skagen 125m<sup>2</sup>

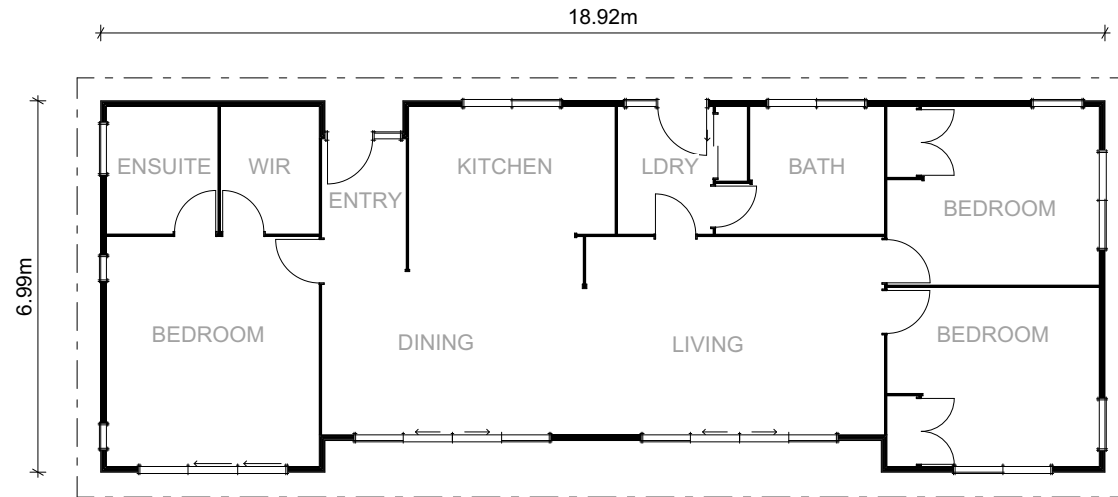




# Skagen

125m<sup>2</sup>

 3 Bedrooms  2 Bathrooms  1 Living area  Optional



A split-level, monopitched roof gives this three-bedroom family home a contemporary flavour. Clerestory windows ensure the interior of the house enjoys plenty of natural light and lots of volumetric space.

A centrally placed kitchen and open plan living and dining areas separate the spacious master bedroom, WIR and ensuite from the two other bedrooms.







Te Rakau 125m<sup>2</sup>

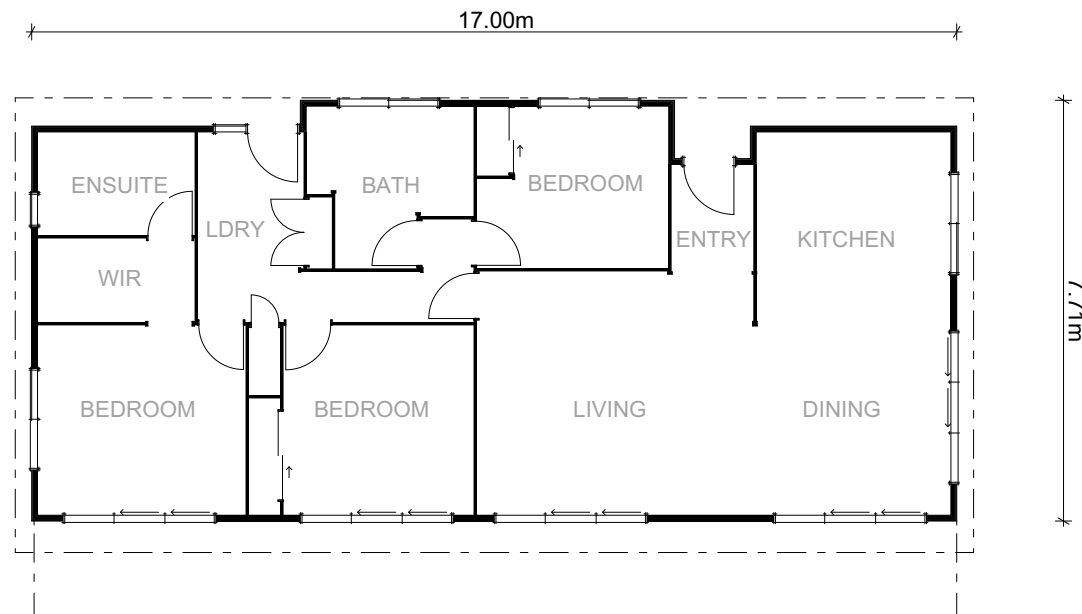




# Te Rakau

125m<sup>2</sup>

 3 Bedrooms
  2 Bathrooms
  1 Living area
  Optional



The Te Rakau is a sunny home that is connected with the outdoors from almost every room. Ranch sliders in the kitchen, dining, living, second and main bedroom open this home up completely, with an extended eave along the front offering shelter from the elements as well as a break in the simple monopitched roofline.

The kitchen is welcoming and spacious with a central island becoming the heart of this social zone. All the living spaces are located on one side of this design and the utility with ample storage, as well as bedrooms and bathrooms are found through the passage on the other. This a light filled and contemporary home solution whether you are after a family, retirement or holiday home.







Verandah 128m<sup>2</sup>

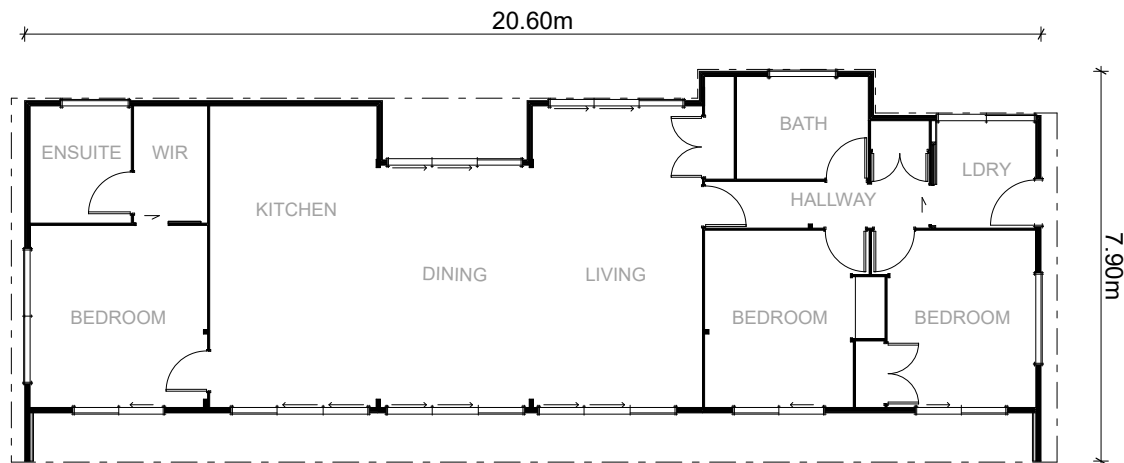




# Verandah

128m<sup>2</sup>

 3 Bedrooms  2 Bathrooms  1 Living area  Optional







The long narrow lines of the Verandah are perfectly suited for beach, farm or town living. The master bedroom and ensuite are tucked away on one end, with two bedrooms on the other. Generous storage spaces are included in the living area and next to the laundry.

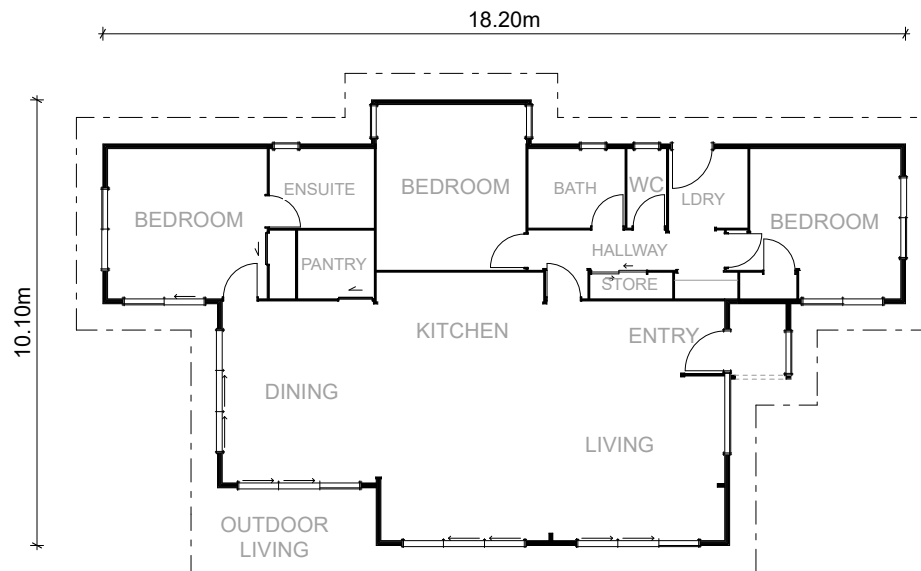
The open plan design, paired with blonded timber interiors, features outdoor living access to the front and back, creating a pleasing sense of well-being. A second bathroom and separate laundry make this design perfect for families and visitors, or for downsizing in style.



# Marahau

128m<sup>2</sup>

 3 Bedrooms  2 Bathrooms  1 Living area  Optional



This home is all about the clever use of space. The kitchen is centrally placed at the heart of the home with a large open plan living and dining on either side.

All the living spaces face ranch sliders and high clerestory windows which fill the area with light. An al-fresco outdoor area from the dining room makes for easy entertaining and the walk in pantry, which is tucked to the left of the kitchen, is welcome for extra storage. Fabulous as a holiday home or a family home, the Marahau is bright and breezy.





Marahau 128m<sup>2</sup>









Arcadia 131m<sup>2</sup>

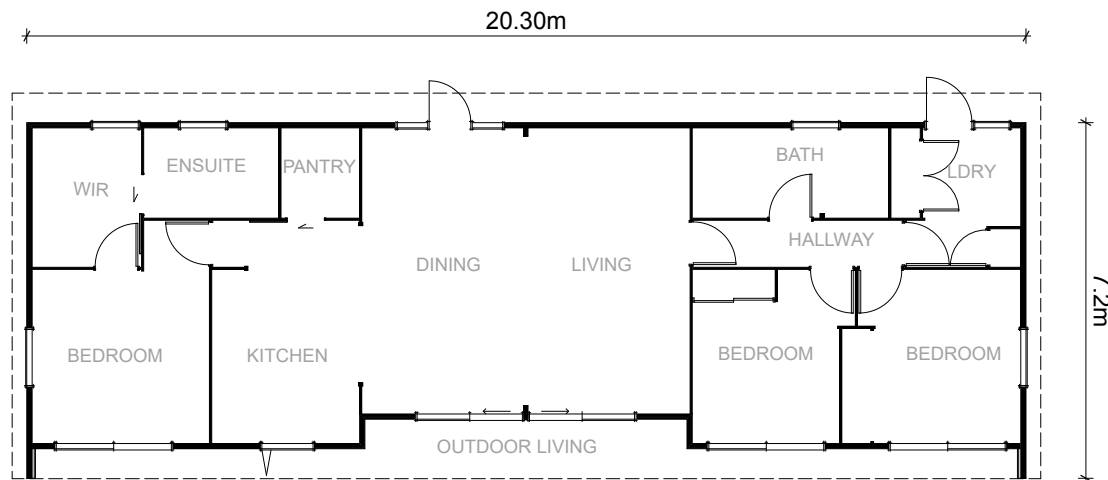




# Arcadia

131m<sup>2</sup>

 3 Bedrooms  2 Bathrooms  1 Living area  Optional



The Arcadia design is the combination of a practical floor plan with stylish architectural details, creating a very liveable 3 bed, 2 bath modern home.

Striking laminated beam detail and sloping sarked ceilings – both hallmarks of a timeless Lockwood – expand the living space, dining and kitchen areas with cohesive visual lines. The WIR off the master is unexpectedly generous for a small family sized home, and even more surprising is the master bathroom which leads off from it, with its equally large shower.


Add an expansive covered deck for indoor-outdoor living opportunities – simply throw open the sliding doors and spill out onto the extended entertainment space.

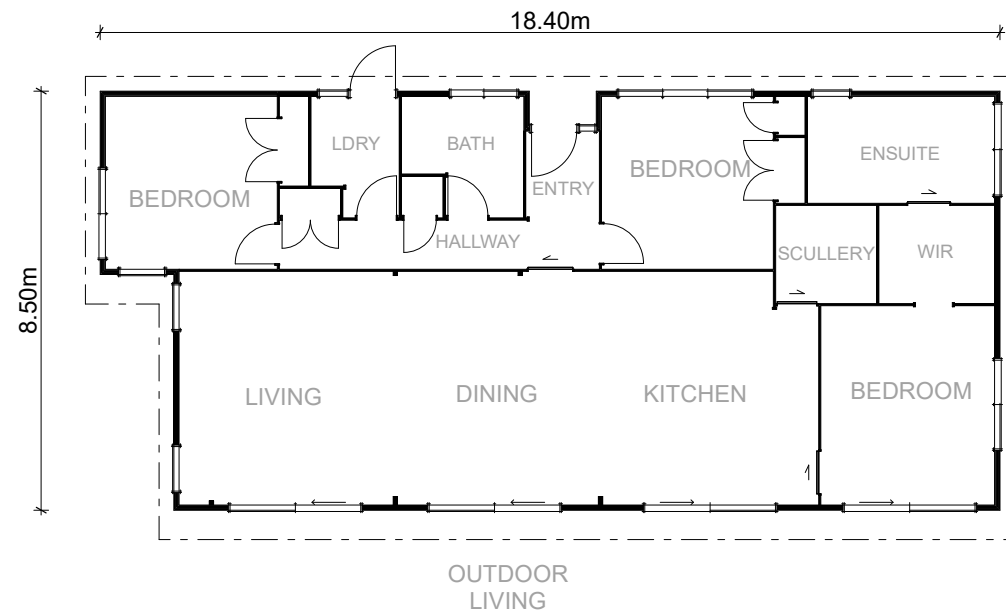




# Acacia

148m<sup>2</sup>

 3 Bedrooms
  2 Bathrooms
  1 Living area
  Optional



The Acacia is a home of two halves. The kitchen with separate scullery, open plan living and master ensuite are found on one half with other side comprising the entrance, main bathroom, laundry and two bedrooms. The master is a private oasis with a large ensuite and walk-through-robe.

This stunning home is an entertainers dream with sliding doors opening out from the large kitchen, dining and living areas. A large scullery makes dealing with the crowds a breeze.



Acacia 148m<sup>2</sup>





Contact us to start your home building journey today!

Phone 0508 562 596 or +64 7 347 7691

Email [info@lockwood.co.nz](mailto:info@lockwood.co.nz) | [lockwood.co.nz](http://lockwood.co.nz)