

# Pinevine

## Contents

Conference 2021 - Save the Date!.....	1
New Dust Extraction Systems .....	2
Latest Photography - Crombie Family Home .....	3
We Welcome Back Jeff Parker.....	4
Results of the 35th Annual Lockwood Fishing Competition.....	4
Technical Update.....	5
Variations made to plans after the order has been placed.	5
Bracing units	5
Barge and Fascia Board Standard Lengths	5

## Current Lead Times

Current lead times when placing a final order (all milestones met, order approved for production)

Non-complex or Complex designs up to 120m<sup>2</sup> please allow 6 – 7 weeks from approved for production date

Non-Complex Designs over 120m<sup>2</sup> allow 7 – 9 weeks

For large or complex designs please check with the production team for more accurate lead times.

**Please remember it is essential that all orders are complete, with all signed documentation etc. in place.**

## Conference 2021 - Save the Date!

## Thursday 26 - Friday 27 Aug



2021 is a milestone year for Lockwood, celebrating 70 years of building homes and commercial buildings in New Zealand and around the world. We notified you last year that conference was going to be held earlier in August. We have had to move the date as the venue we'd booked has been closed by the council due to earthquake safety concerns.

Our upcoming Marketing and Technical conference will be the perfect opportunity for everyone to get together, celebrate our milestone and share knowledge and experience with fellow

contractors. The conference will run over two days, Thursday 26th and Friday 27th August in Rotorua.

We will wrap up our conference with a 70th Anniversary celebration dinner on Friday 27th August at the Distinction Hotel. Contractors, Lockwood office and manufacturing staff, and special guests are invited to join the celebrations.

We'll get further info to you regarding registrations, accommodation, etc by the end of April. We are also busy working on content to keep everyone engaged over the two days. We have some exciting things planned!

Numbers are limited for the Friday evening event. Please get in touch with Sarah (sarahsmith@lockwood.co.nz) if you have any special guests or additional staff you would like to invite to the Friday night celebration.

## New Dust Extraction Systems

We're investing around \$350k for new dust extraction systems designed and installed by Egmont Air. Joinery and Precut departments will have dedicated systems, while finger jointing and planers will get two new systems to keep treated and untreated timber dust separate.



*Similar unit to the two extraction units to be each installed for Joinery and Precut.*

The joinery and precut systems are expected to be installed and commissioned in mid-April. As these are new systems, we can install them without too much interruption. The new dust extraction systems are modular dust filters, commonly called Bag Houses or Bag Filters. Our units will be discharging to bins.



The current cyclone extraction system outside the planer shed (above) will be dismantled, and two units will be installed to take dust from the planers and fingerjointer. We'll time this work around our Christmas factory shutdown in December.



The planers and fingerjointer will feed into two systems similar to this unit. One unit for treated shavings, the other for untreated.

These new systems will take up much less space than our current system. They will also be more energy efficient, safer, and less prone to mechanical break-down.

The installation of new extraction systems is a critical step towards further modernisation of the Lockwood plant.

## Latest Photography - Crombie Family Home



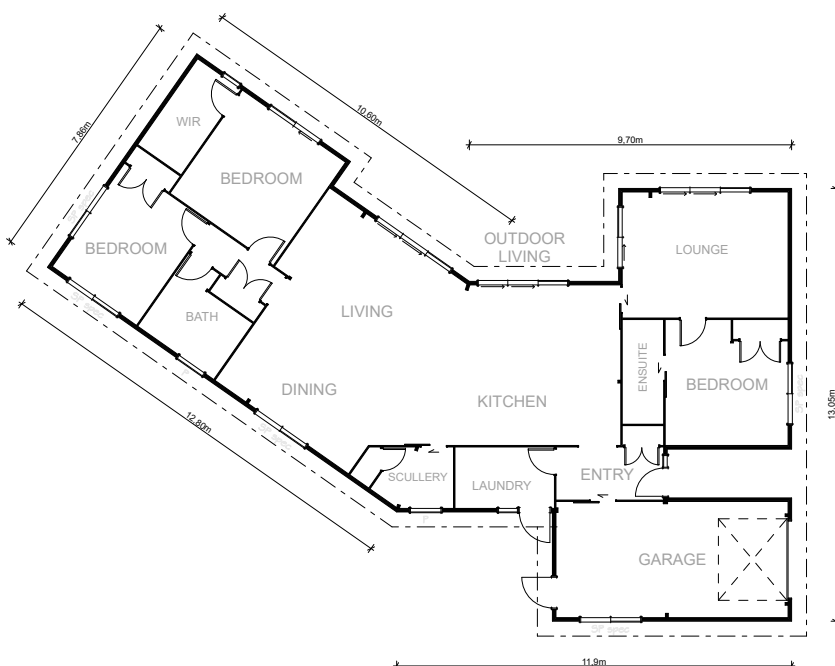
The Crombie family home is the latest design to be added to the Lockwood website. Brent and his team from Tuohy Homes designed and built this unique residence, situated on a conservation zoned site in Waikanae.

The Crombies weren't familiar with Lockwood, but a visit to the Al-Fresco show home in Wellington sparked their interest. They loved the look and feel of solid timber, that it was environmentally friendly and NZ made.

Although they had taken on extensive renovations in the past, this stunning Lockwood home is the first time the Crombies had embarked on a design and build journey. After plenty of site-specific challenges and with construction interrupted by COVID lock downs, they were able to move into their striking, three-bedroom home in the middle of 2020.

The unique three-bedroom home was designed by Tuohy's designer Ross Kerry. It's clever angled shape maximises the outlook into the site with protected native trees. The Crombies couldn't speak more highly of their experience. They were blown away by the service, care and attention to detail from every member of the Tuohy Homes team, and were also very impressed with the Lockwood factory tour, saying how special it was to see their Lockwood components labelled with their name.

The Crombie's home will be promoted across our various marketing channels in the coming weeks.



## We Welcome Back Jeff Parker



Jeff has had a long and fruitful career in various wood-related roles in NZ and Australia. He spent over twenty years with the Forest Research Institute (now SCION), before moving on to various research and development roles with Fletcher Forests and Carter Holt Harvey. During his last stint with Lockwood he led our research and development initiatives including the VG laminated pine weatherboard, and the Super Wall building system.

Following his time at Lockwood, Jeff went out on his own developing technologies for wood processing, engineered timber products, and coating systems for water repellence and stability. He then moved on to Boral Timber in NSW, Australia to manage their hardwood kilns. In the last six years Jeff has had a high profile role as Technical Manager for the Wood Processors and Manufacturers Association (WPMA).

In this role he represented WPMA to government departments, Standards Association and others about technical and compliance issues. He was also part of the team setting up the NZ Timber Quality Scheme.

Jeff recently returned from Australia to Rotorua with his wife Glenda. He will be spearheading our Research and Development initiatives. At the top of our wish list are: the development of a new bracing approach for Lockwood structures, and developing the next-generation solution for Lockwood thermal performance.

## Results of the 35th Annual Lockwood Fishing Competition

The 35th Annual Lockwood Fishing competition was held on the 13th March on Lake Okataina. There were 62 anglers and 45 fish weighed in. Dave Hutchings said "The fishing was hard for most of us but the weather was brilliant and the company of current and ex Lockwood staff was great.

Noel Hyde from Wingspan (sponsor) got the heaviest fish at 4.054 kg, Pat Osborne (ex-staff) 3.064kg, and Bob Jolland (Grahams father in law) next on 2.822kg.

A big thank you to the event sponsors and everyone who contributed and attended on the day.



## Technical Update

### Variations made to plans after the order has been placed.

For any changes after the order has been approved for production, please contact David MacFarlane to have the change registered as a variation to the order.

A discussion can take place between the contractor and Lockwood around what stage the order is currently at and if those materials have already been ordered.

Once agreed, a copy of the confirmed / completed variation form will be issued to the contractor and to the relevant factory managers.

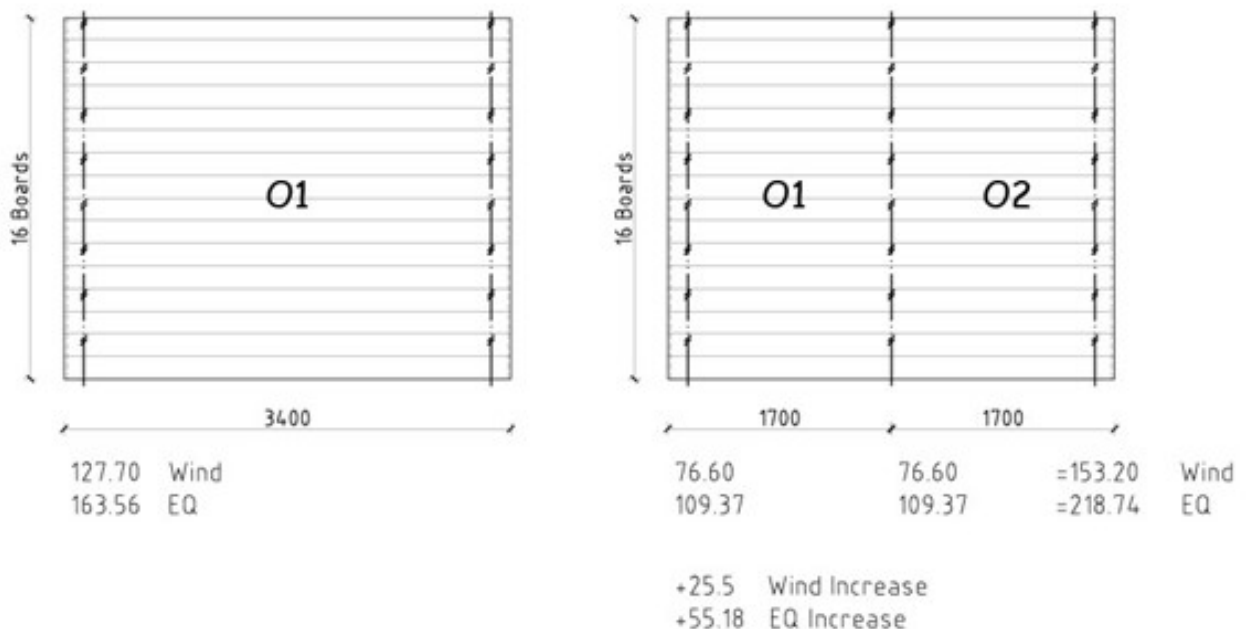
### Bracing units

Tie rods are required to be provided at 2.7m maximum c/c for 107 / 62mm exterior walls and 2.2m maximum c/c for 44mm interior walls (Structural Handbook March 2015).

Based on these tie rod requirements, any 107mm wall panels longer than 3m and 44mm wall panels longer than 2.5m with a central tie rod provides an opportunity for Designers to specify two bracing panels within one wall panel resulting in increased earthquake and wind bracing values (Holmes Solutions bracing capacity testing report September 2013)

This process is currently specified by engineers in their bracing designs and is also available to designers.

Example:



Bracing line O1 = x 3.4 panel x 16 boards high, with a tie rod at each end and 2 rows of profiles provides 127.7 wind and 163.56 eq

Bracing line O1/O2 = 2 x 1.7 panels x 16 boards high with 2 tie rods and 1 row of profiles to each panel provides 76.6 x 2 = 153.2 wind and 109.37 x 2 = 218.74 eq (around 20+% increase). There is potential for even greater numbers if the panels contains more than 1 row of profiles.

### Barge and Fascia Board Standard Lengths

Both the 280 x 31 and 230 x 31 rebated and non-rebated Lockwood barge and fascia boards are now available in three standard lengths, 4800mm, 5400mm and 6300mm. Please specify the length you require on ordering.