



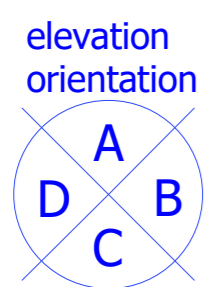
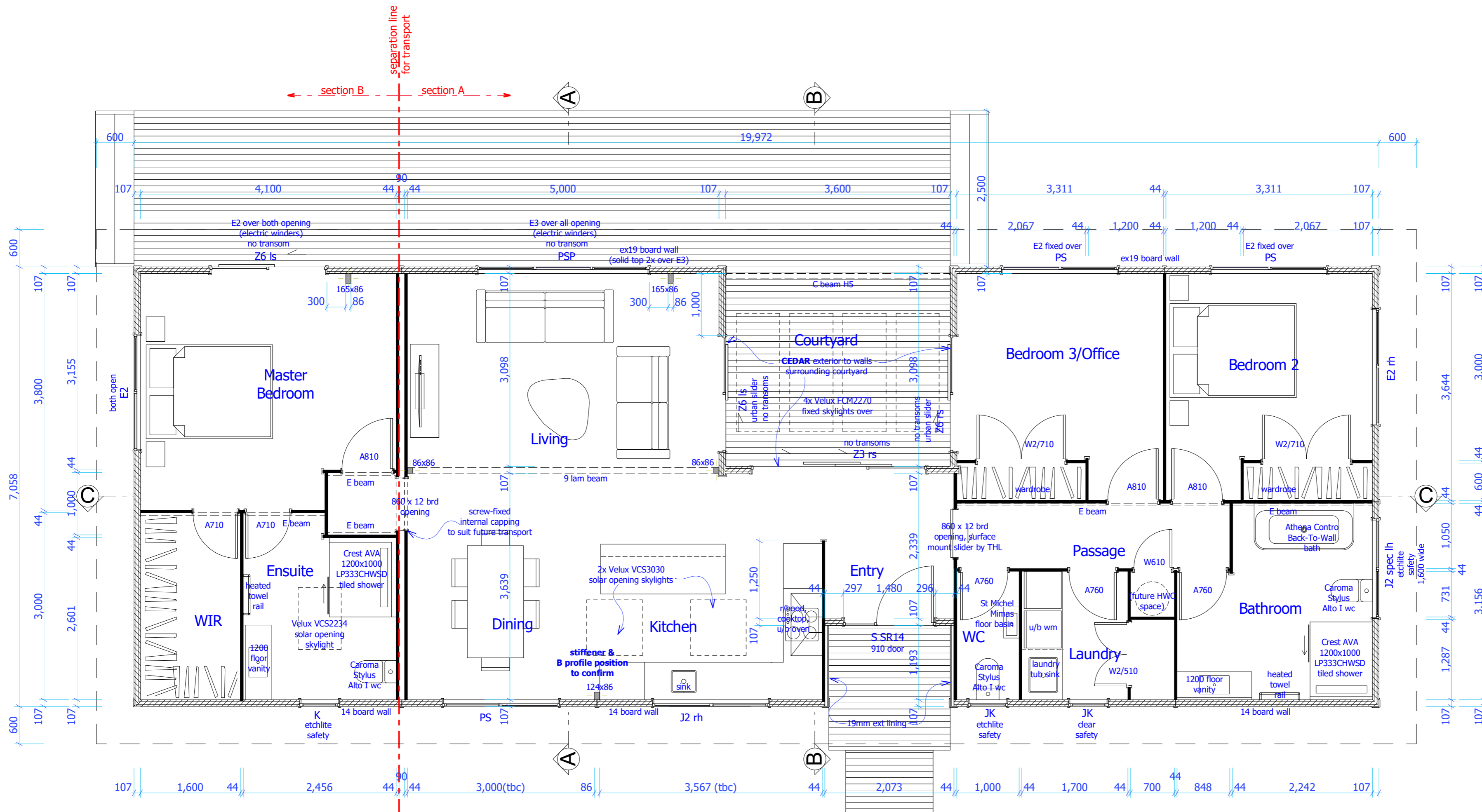
LOCKWOOD DESIGN REFERENCE PLANS.

These plans can only be used by Licensed Lockwood Contractors and Lockwood Group staff.
Specifications and details are indicative and do not account for project or
site specific requirements or changes to relevant NZ Standard
These plans are not suitable for Consent and are not to be reproduced.

Job Number:

L20002

© All plans copyright Lockwood



Floor Plan
1:50

Floor area = 125.9m²

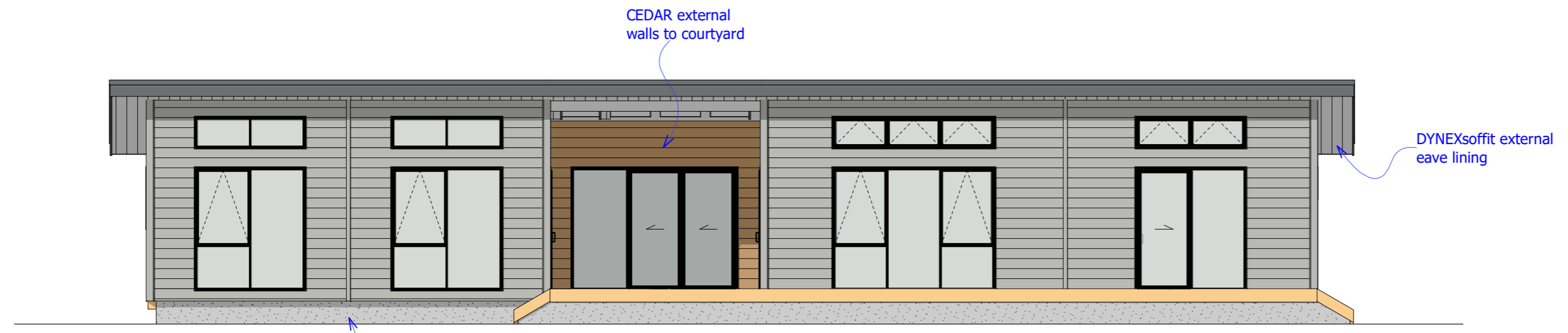
LOCKWOOD DESIGN REFERENCE PLANS.
 These plans can only be used by Licensed Lockwood Contractors and Lockwood Group staff.
 Specifications and details are indicative and do not account for project or site specific requirements or changes to relevant NZ Standard
 These plans are not suitable for Consent and are not to be reproduced.



Job Number:

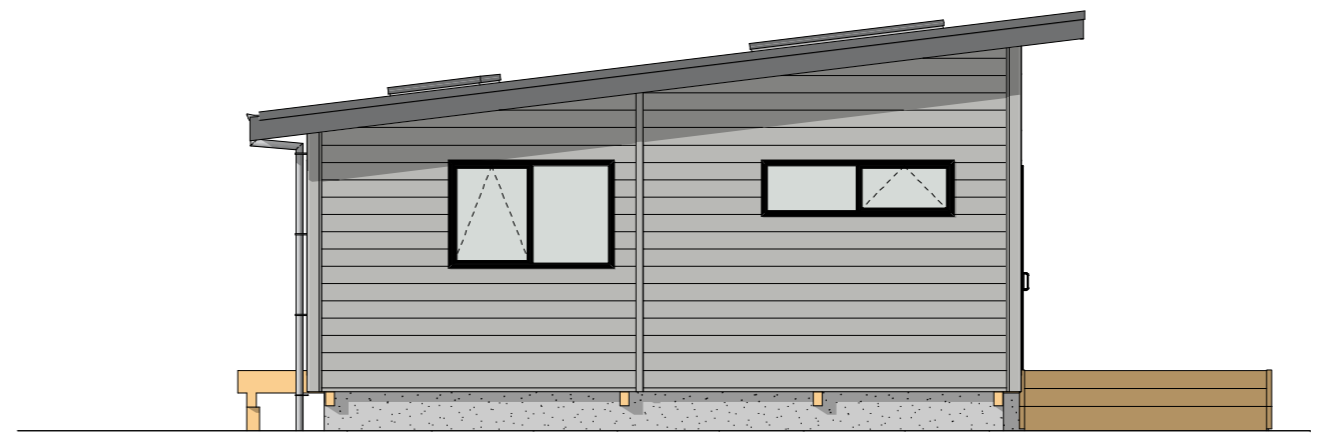
L20002

© All plans copyright Lockwood

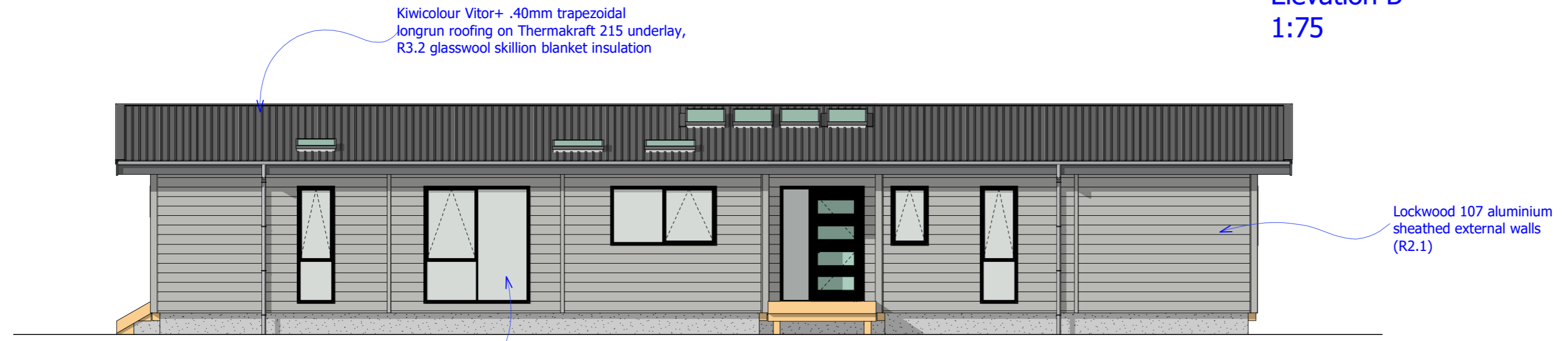


Elevation A
1:75

Transportable timber subfloor on temporary foundations, painted Hardiflex base lining, Expol Black R1.8 floor insulation

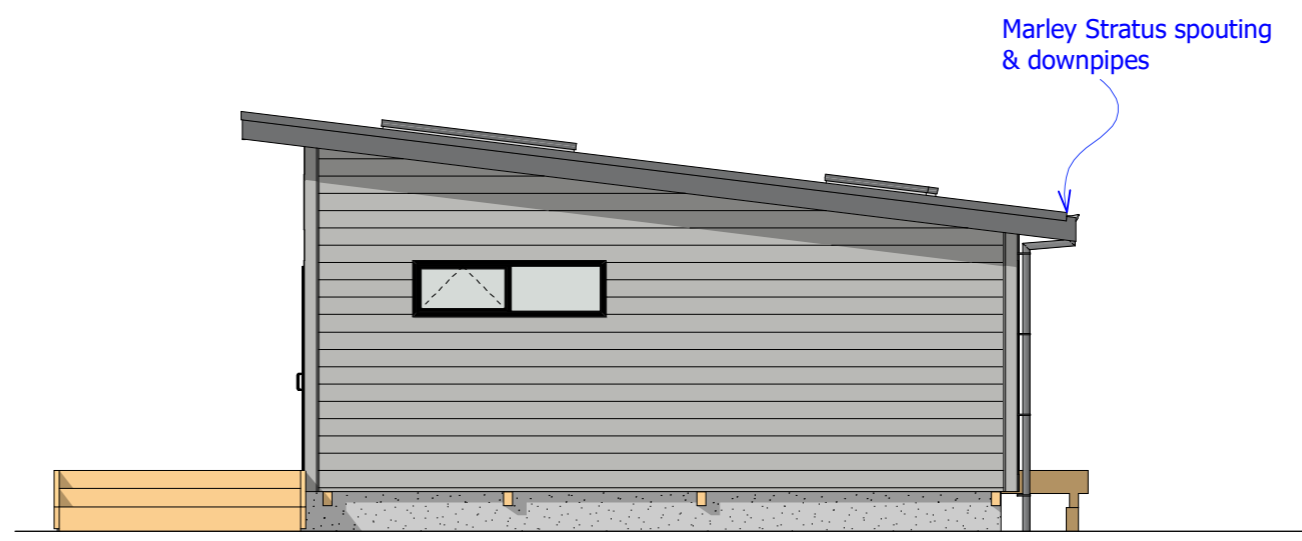


Elevation B
1:75



Elevation C
1:75

Weathertight suite double glazed external powdercoated aluminium joinery



Elevation D
1:75

LOCKWOOD DESIGN REFERENCE PLANS.
 These plans can only be used by Licensed Lockwood Contractors and Lockwood Group staff.
 Specifications and details are indicative and do not account for project or site specific requirements or changes to relevant NZ Standard
 These plans are not suitable for Consent and are not to be reproduced.