

Fully Customisable  
**Small Home Ideas**  
51m<sup>2</sup> - 127m<sup>2</sup>





# Finch

51m<sup>2</sup>



2



1

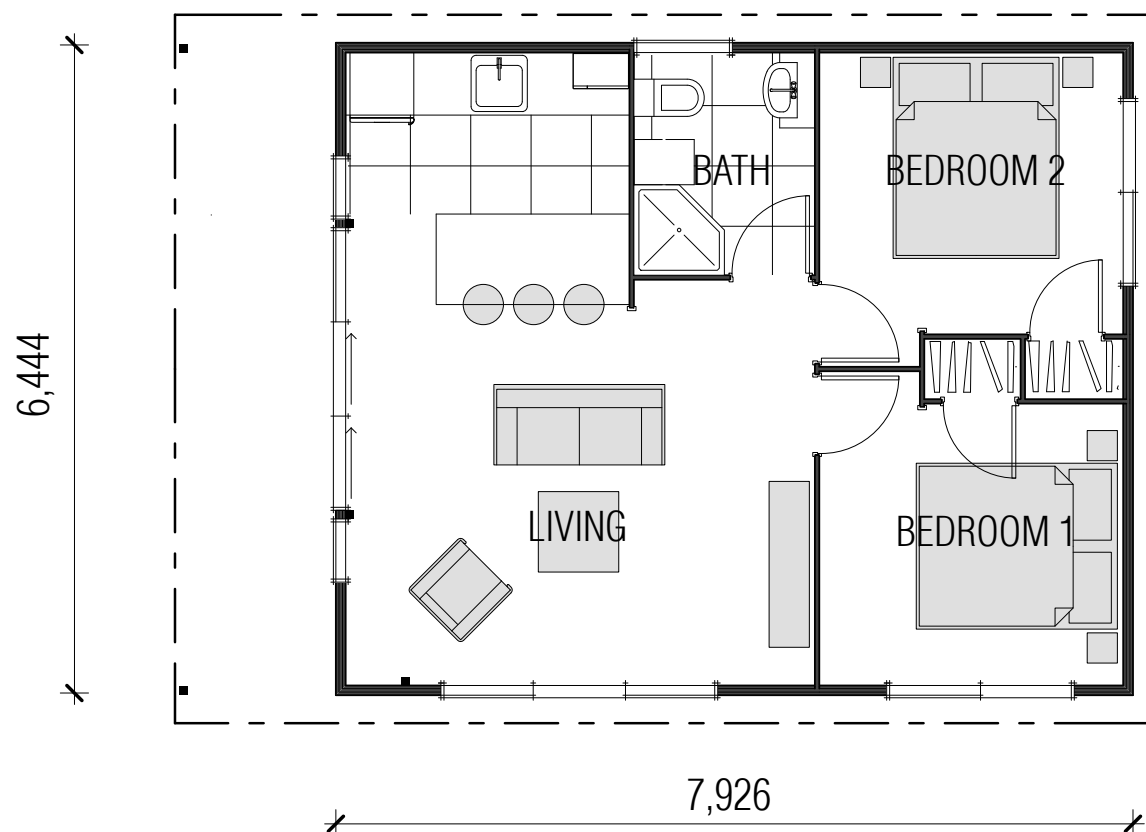


1



optional

This cosy home is ideal for a first home, a beach house or a second home on a property with an existing house. Its open-plan living, dining and kitchen area flows out through sliding stacker doors onto a sheltered terrace. It features an open plan living space with vaulted timber ceilings.



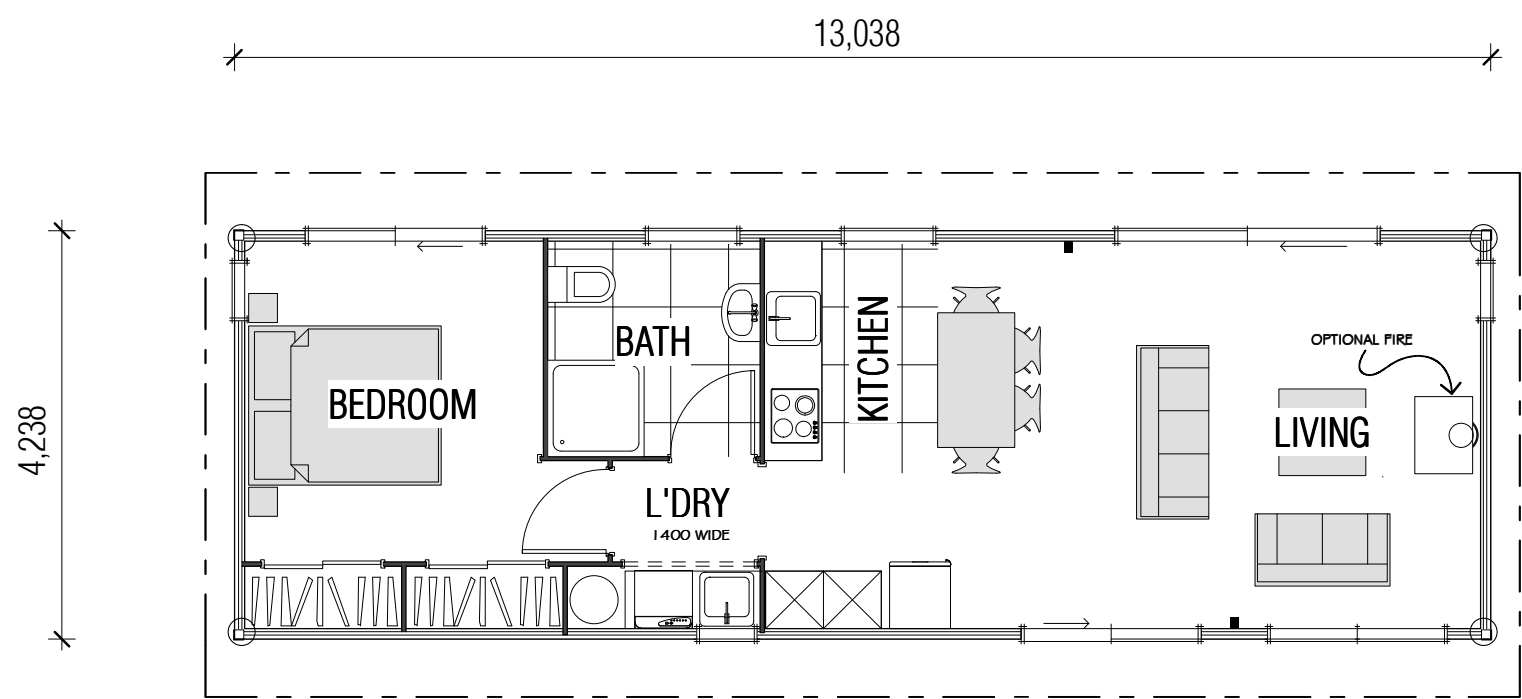




# Sandpiper

55m<sup>2</sup>  1  1  1  optional

Perfect for a second dwelling, this one bedroom home has everything you need including a laundry and plenty of storage in the bedroom. The open plan living area has large sliding doors for great indoor outdoor flow.







# Haven

60m<sup>2</sup>



2



1

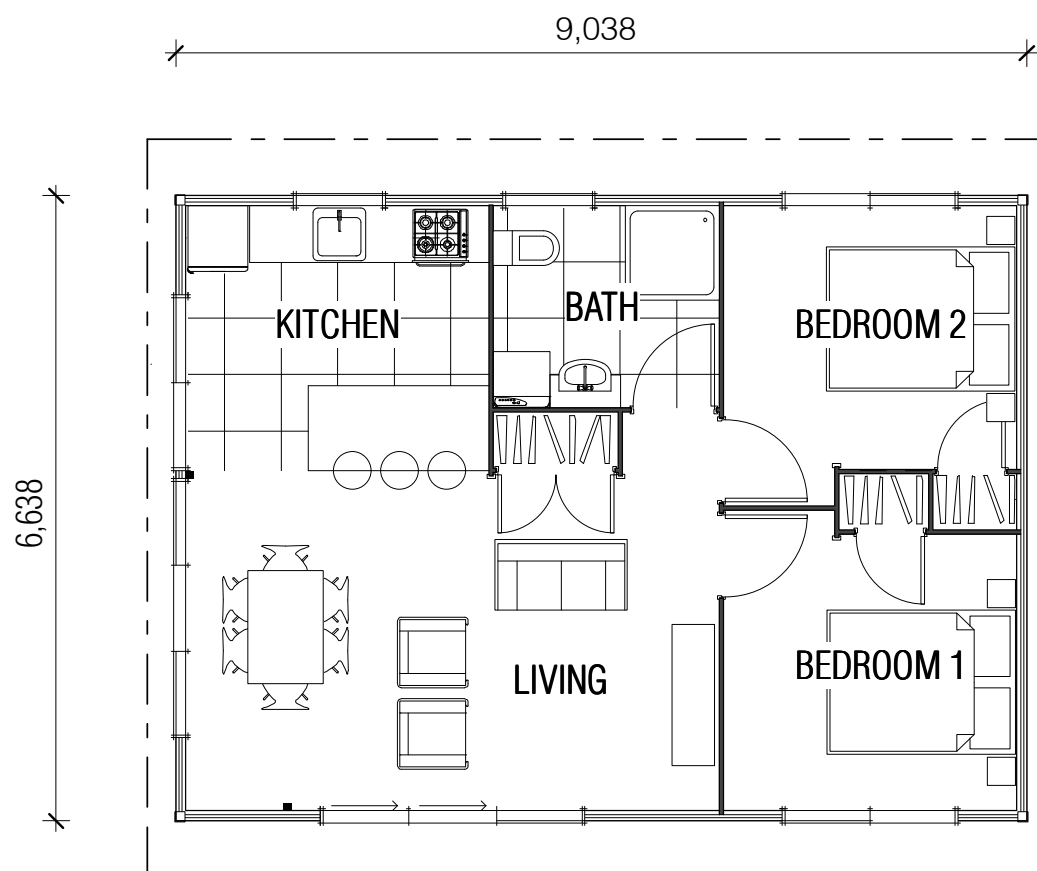


1



optional

Featuring a mono-pitch roofline and high, sarked, timber ceilings the Haven is a modern compact plan. With two bedrooms, one bathroom, and open plan living, large sliding doors offer a great sense of space and light.







Haven 60m<sup>2</sup>

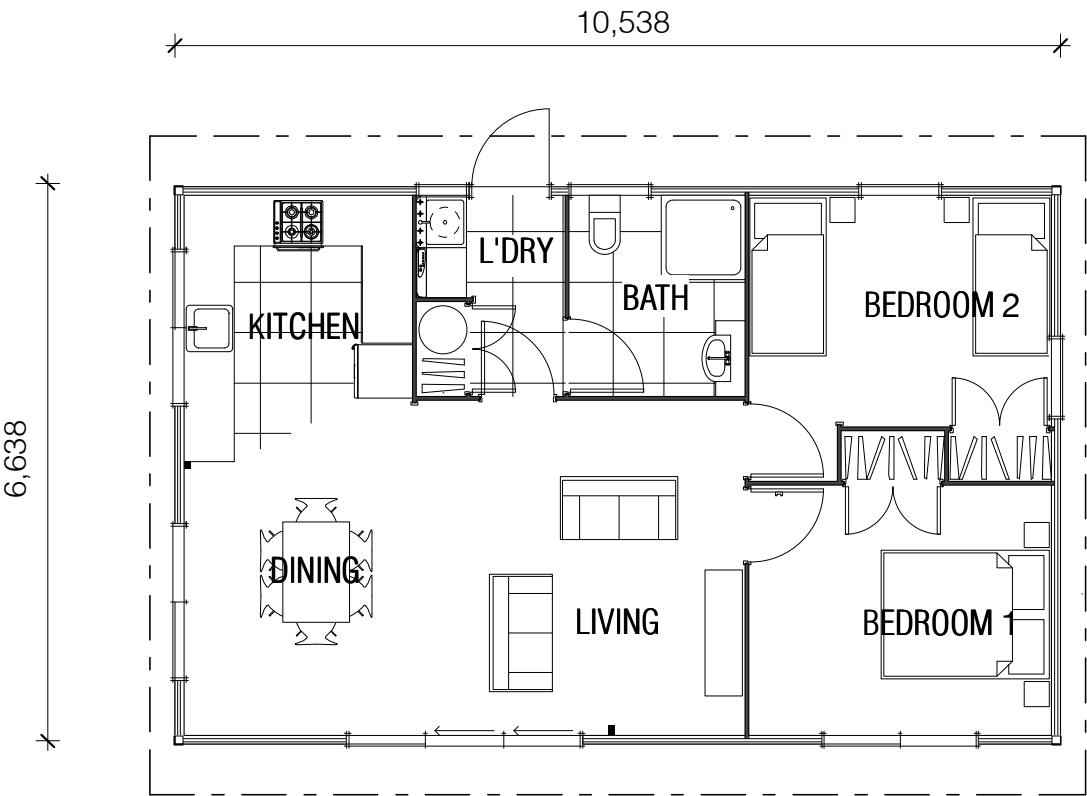




# Lakeview

70m<sup>2</sup>  2  1  1  optional

The Lakeview is a slightly larger version of our popular Haven plan. With an extra 10m<sup>2</sup> of floor space available, the living and dining area has been extended, larger wardrobes and a laundry with a back door for ease of entry have been incorporated. The kitchen is quite generous, offering a complete small home with great appeal.







Lakeview 70m<sup>2</sup>





# Pukeko

76m<sup>2</sup>



2



1

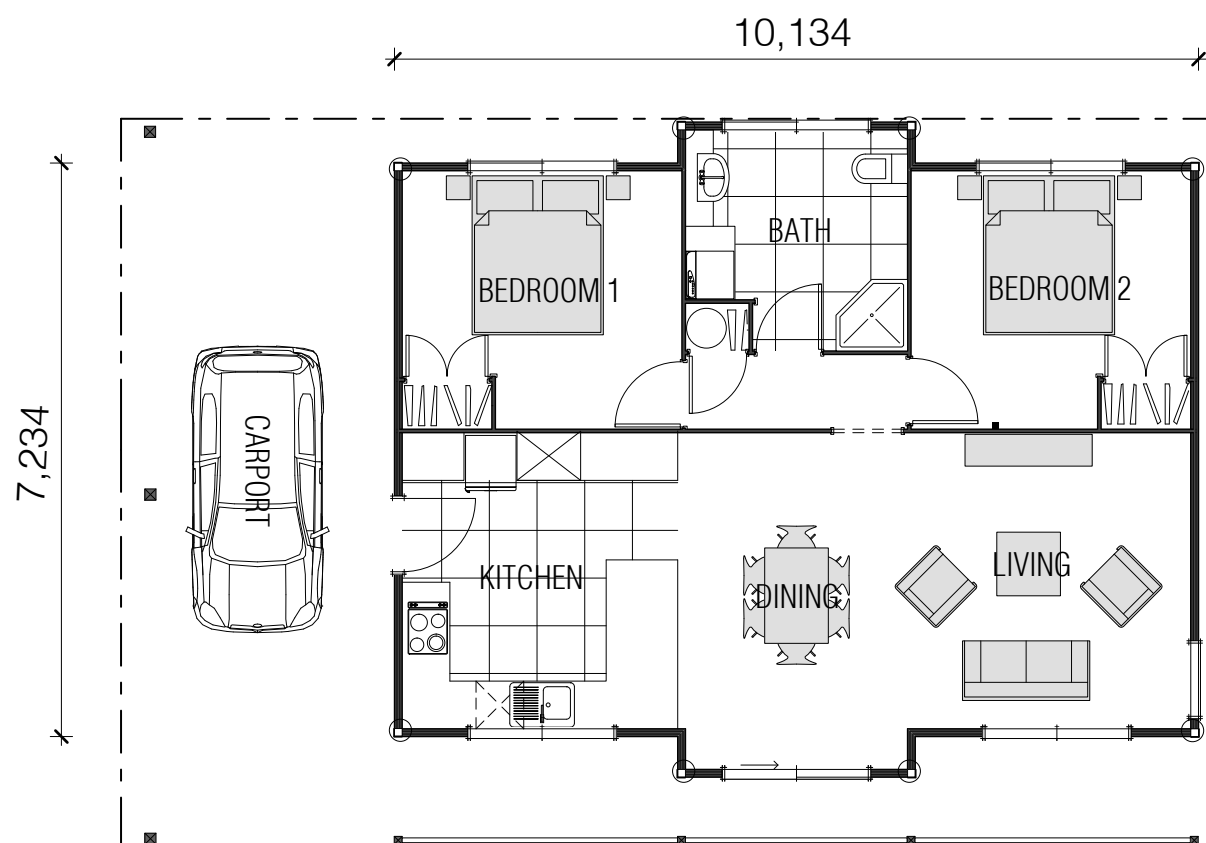


1



Carport

This compact two-bedroom home features two distinct halves, open-plan living with high windows for extra light creating a sense of space with a private carport and entry into the kitchen.



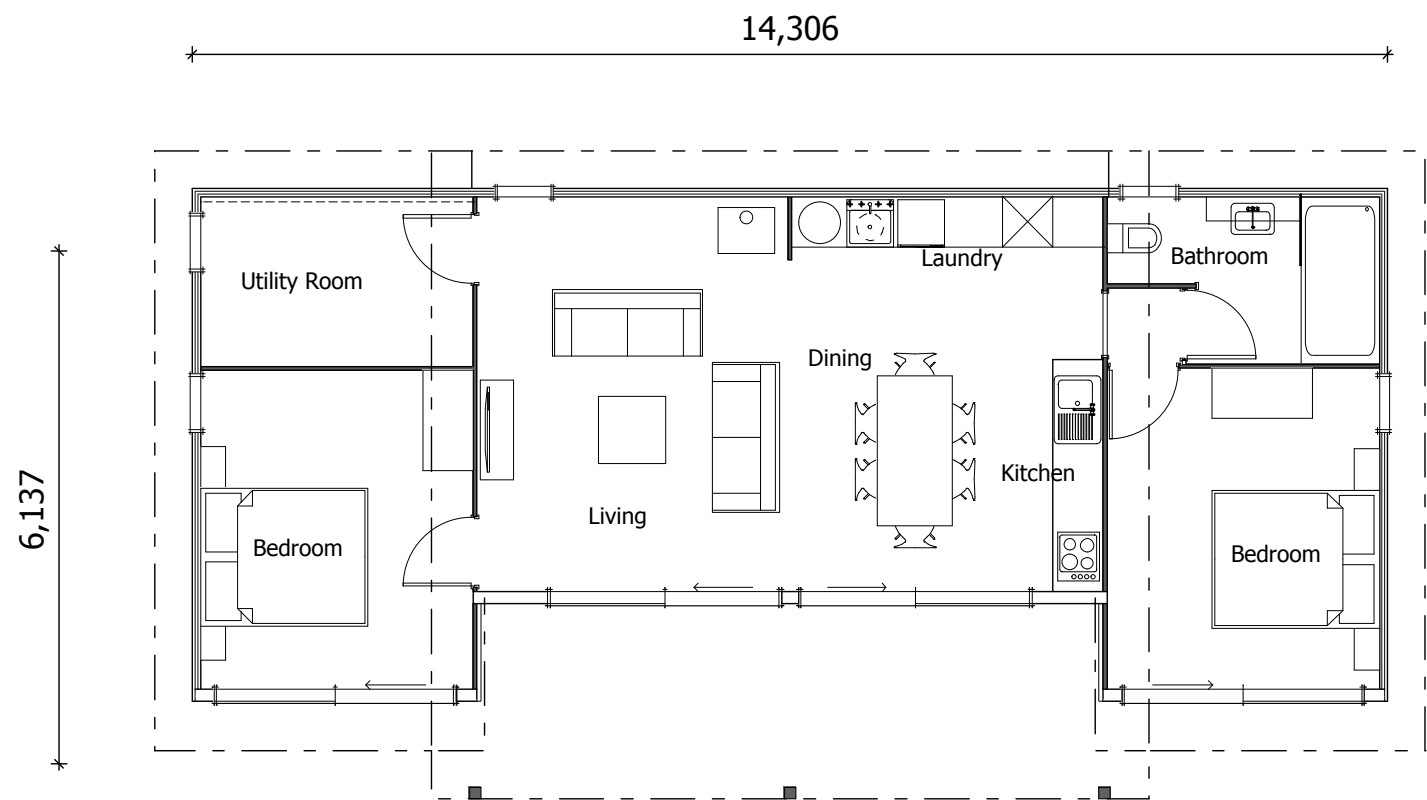




# Papai

79m<sup>2</sup>  2  1  1  optional

Great outdoor living is at the heart of this compact home. Living spaces and the two bedrooms all open onto patio areas. Wide eaves provide a sheltered outdoor living space. A neat compact laundry has been incorporated into the kitchen.







Papai 79m<sup>2</sup>



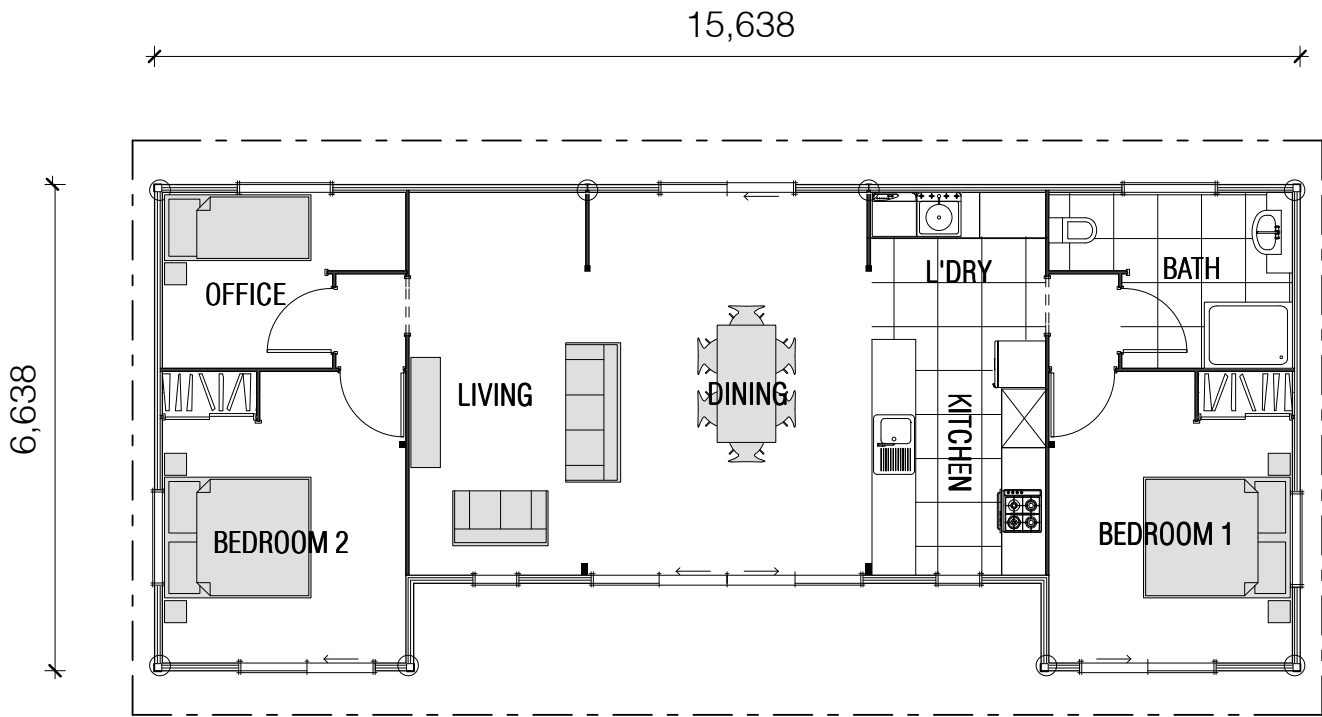




# Vacationer

93m<sup>2</sup>  2  1  1  optional

The Vacationer is modern, airy, stylish is one of our most popular new plans. With two bedrooms plus office or single bedroom, one bathroom and open plan living the Vacationer was designed using the very latest ‘Lifemark’ accreditation design standards.







Vacationer 93m<sup>2</sup>







# Littlewing

94m<sup>2</sup>



3



1

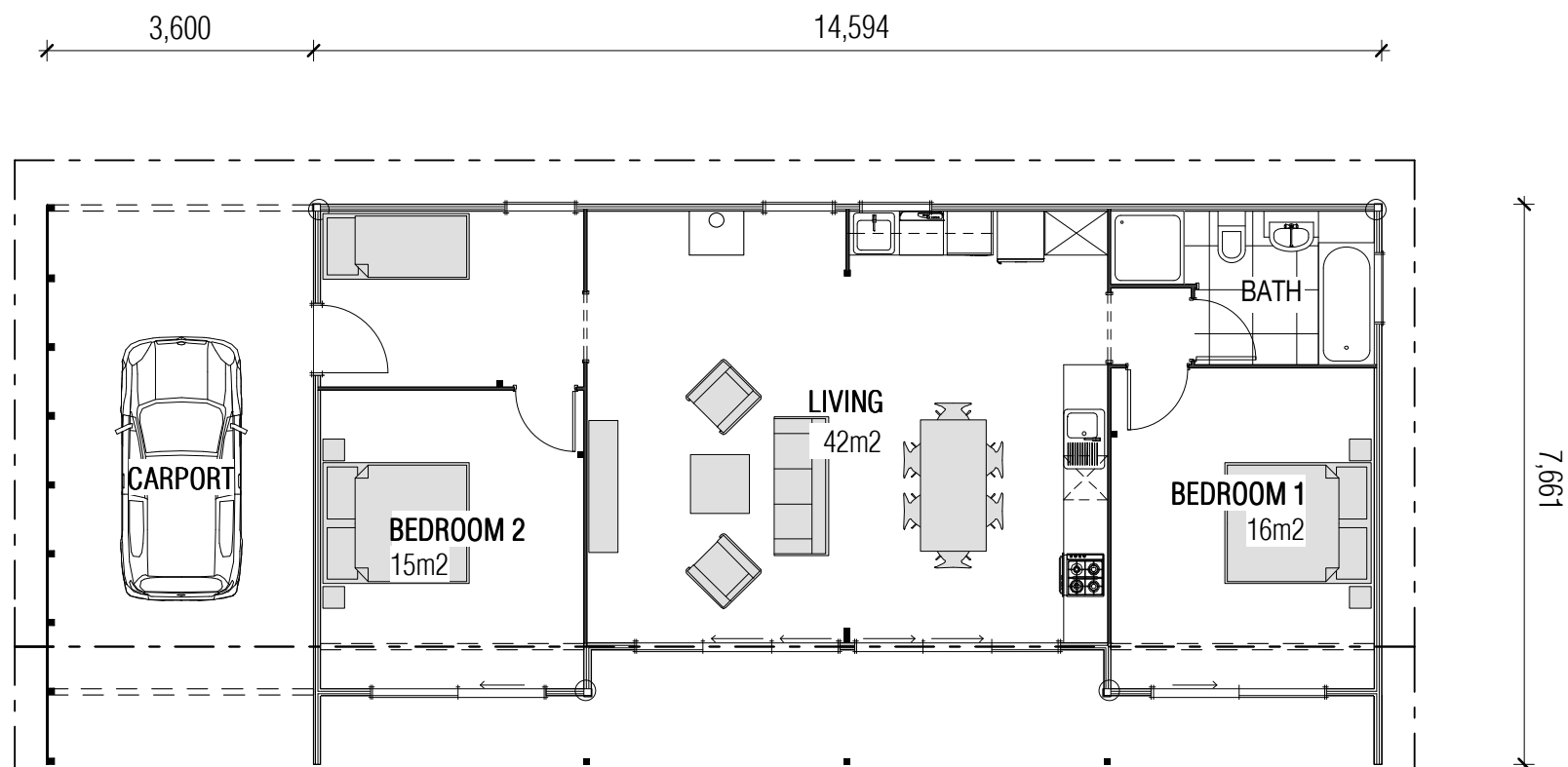


1



Carport

This single-level home with an eye-catching gull-wing roof revolves around a central heart – the living area. Three bedrooms, a bathroom and laundry flow from the family area. The design includes a carport which could be a single garage with internal access.



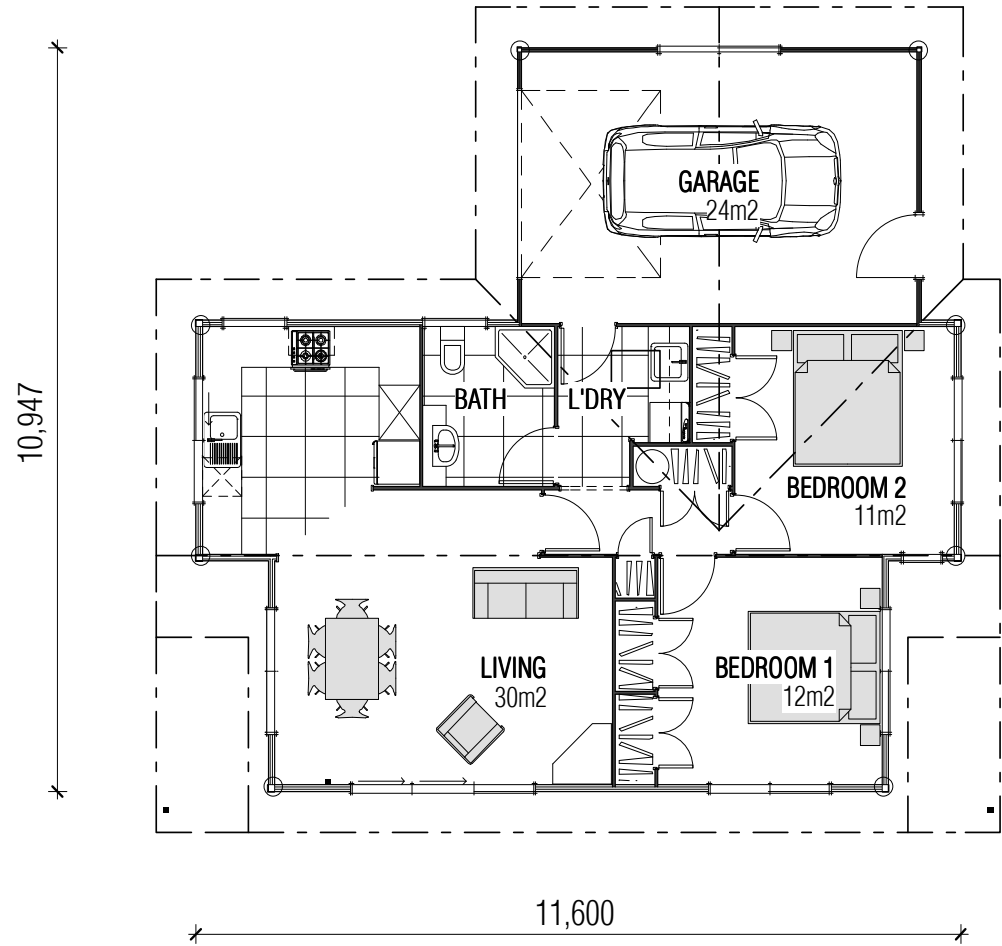




# Temuka

98m<sup>2</sup>  2  1  1  1

Good outdoor living is at the heart of this compact home. Living spaces and bedrooms all open onto patio areas that can be terraced or paved. Internal access via the laundry adds convenience.



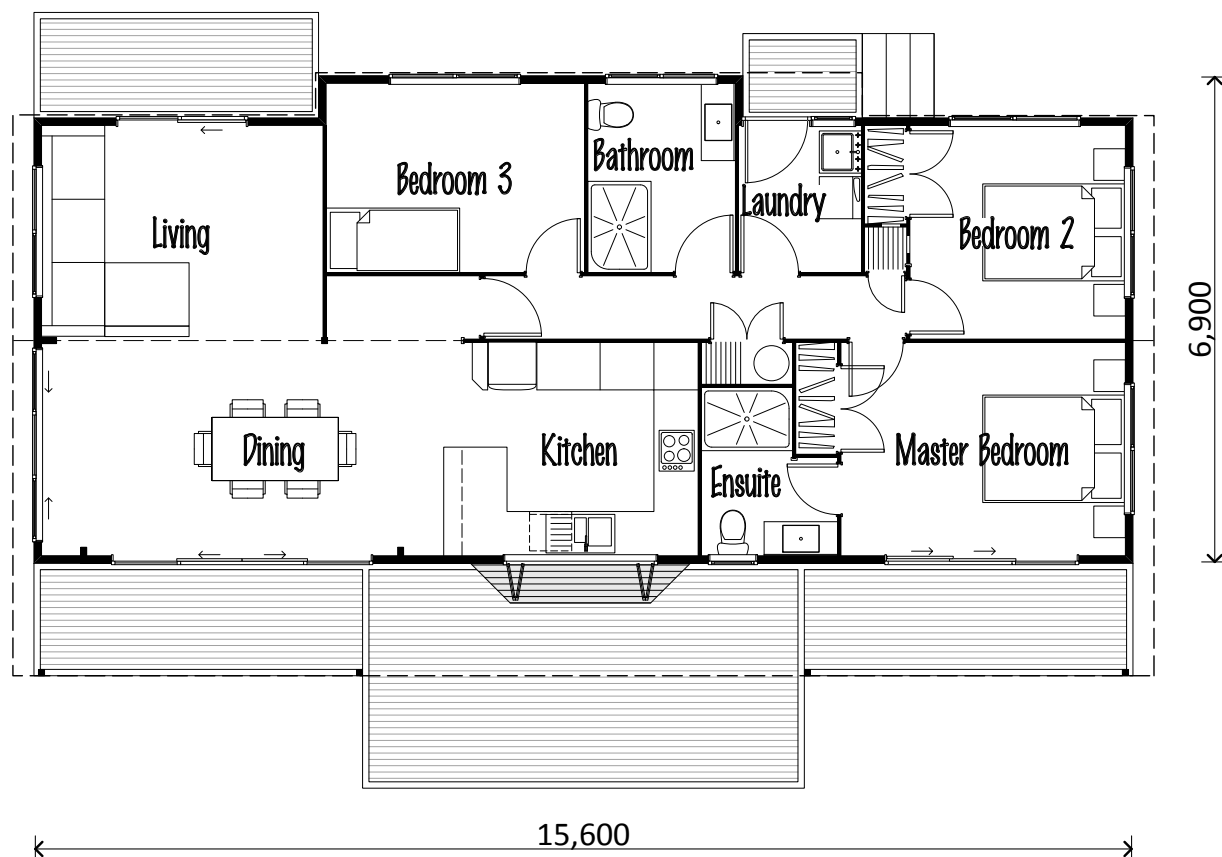




# Nelson

102m<sup>2</sup>  3  1  2  optional

Innovative and stylish, the Nelson fulfills the need for leisurely holidays or busy everyday lifestyles. High raking timber ceilings create a feeling of space, peace and comfort. The open plan, L shaped living and dining space have a great indoor/outdoor flow and lead out to a substantial deck.











# Hobson

103m<sup>2</sup>



3



1

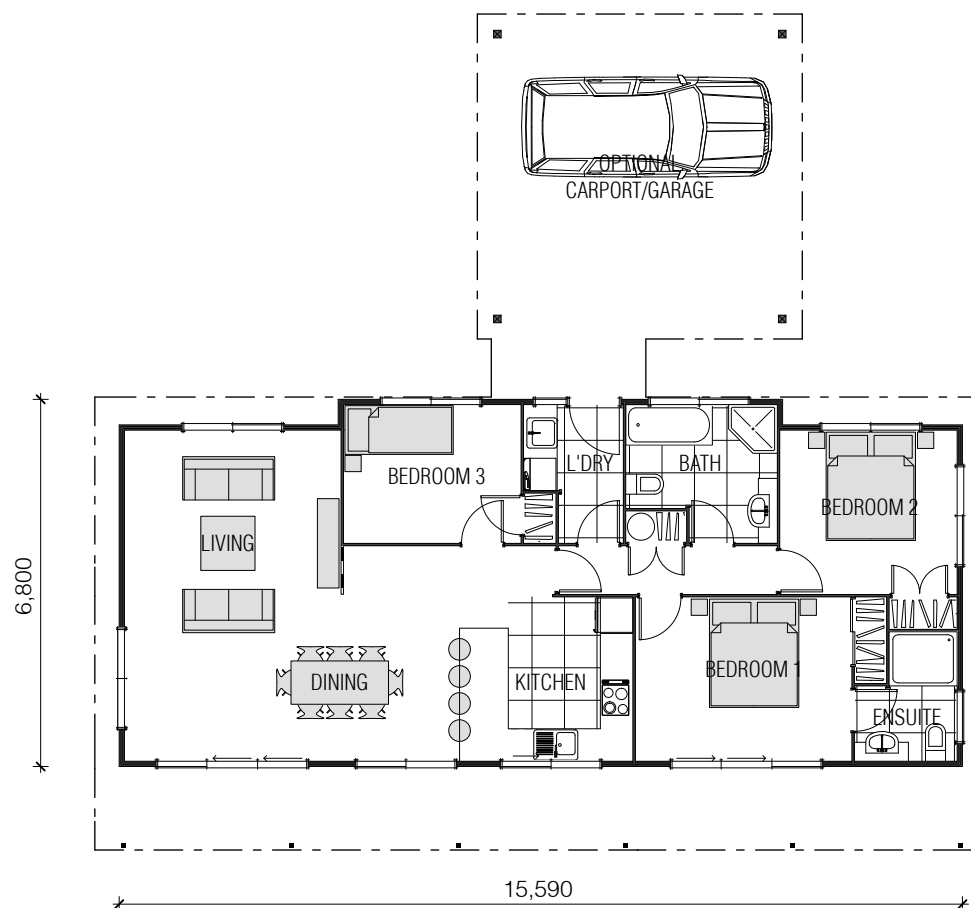


2



optional

This comfortable family home has a master retreat plus two additional bedrooms. A spacious open-plan living area opens up through sliding stacker doors onto a patio that runs the length of the house.



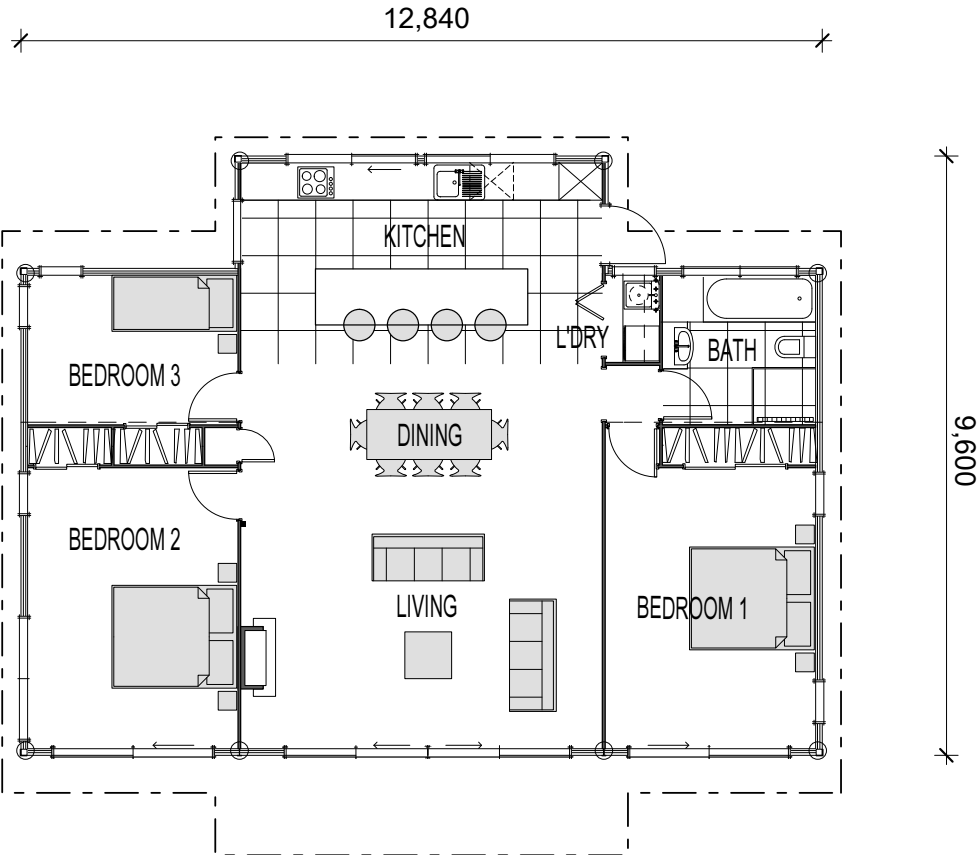




# Kōpuha

110m<sup>2</sup>  3  1  1  optional

This home features a generous open plan living, dining and kitchen area with landscape windows across the extensive kitchen area. The two large bedrooms have their own access to the outdoors. In typical classic Lockwood style, striking timber beams draw the eye upwards to the high monopitched roofline.







Kōpuha 110m<sup>2</sup>



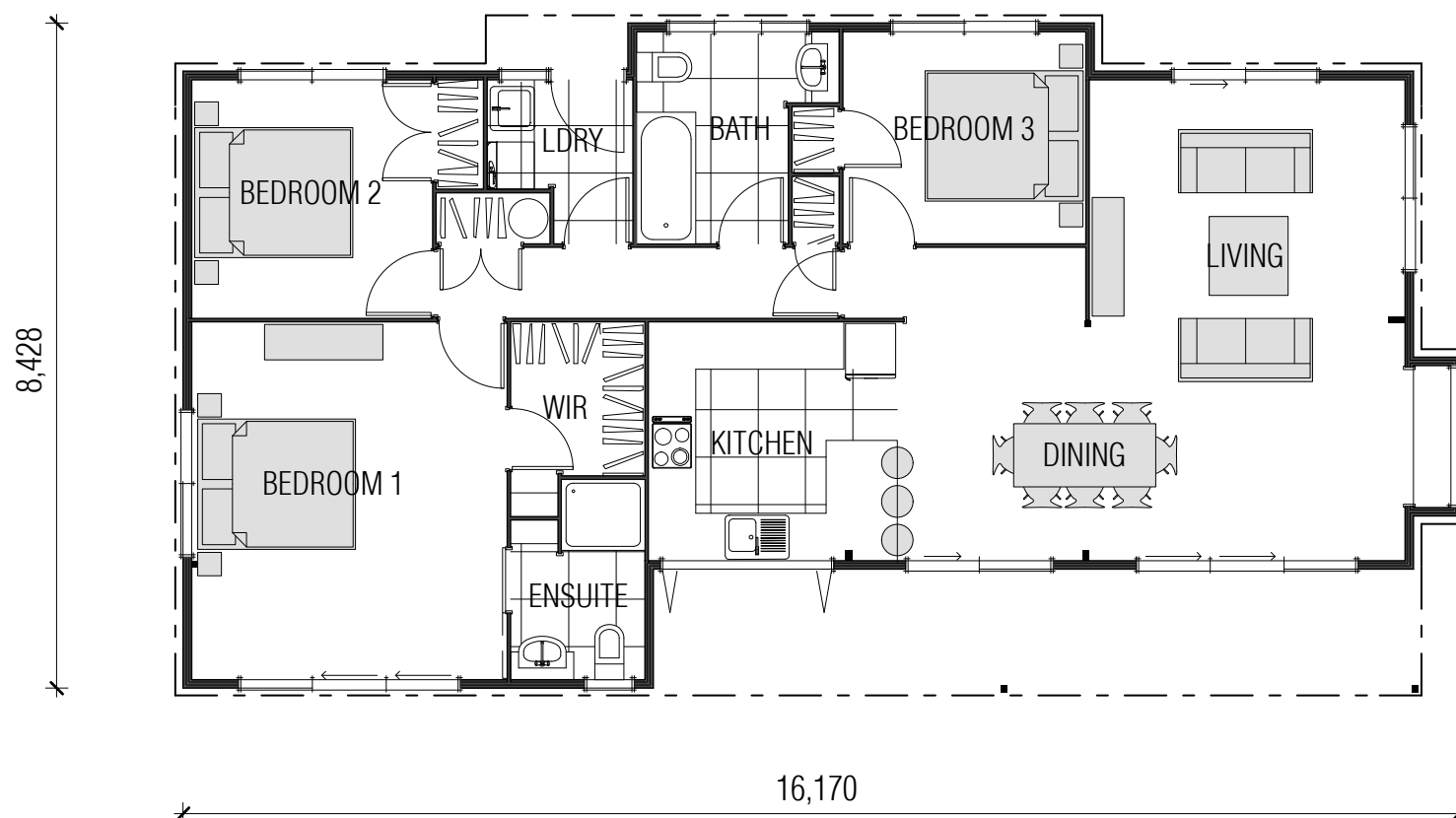




# Stewart

111m<sup>2</sup>  3  1  2  optional

The Stewart is a modified Nelson plan, ever popular as a compact and efficient small home or a great beach getaway. The 2m extended main bedroom now has a good sized WIR and a pleasant open feel about it, as well as a stone feature wall with a fireplace in the lounge.







Stewart 111m<sup>2</sup>

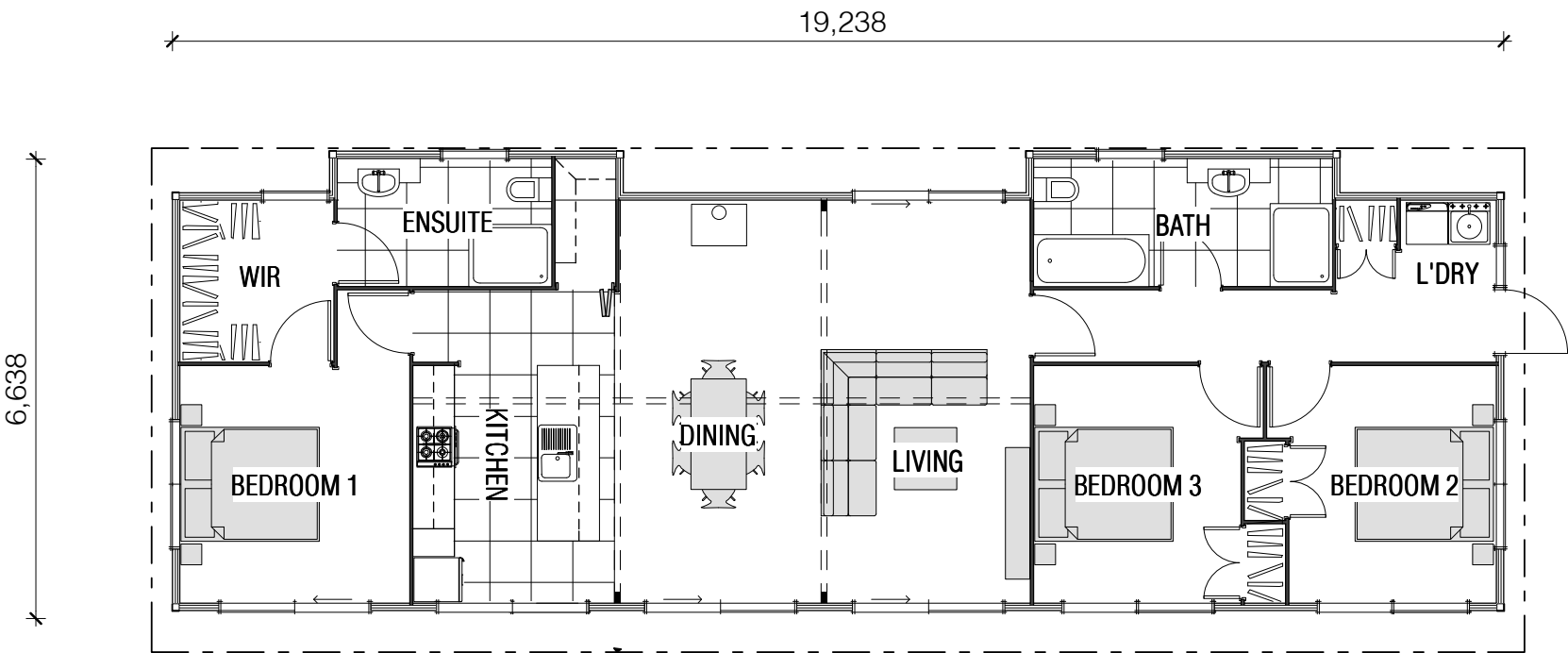




# Castaway

121m<sup>2</sup>  3  1  2  optional

The Castaway has been designed to maximise your location by taking advantage of views, sunshine and lovely breezes off all living and sleeping spaces. Featuring a relaxed open plan style, with separate laundry, nifty pantry, large WIR with ensuite and a fireplace in the living area for those chillier evenings, make the most of this lovely home all year round.



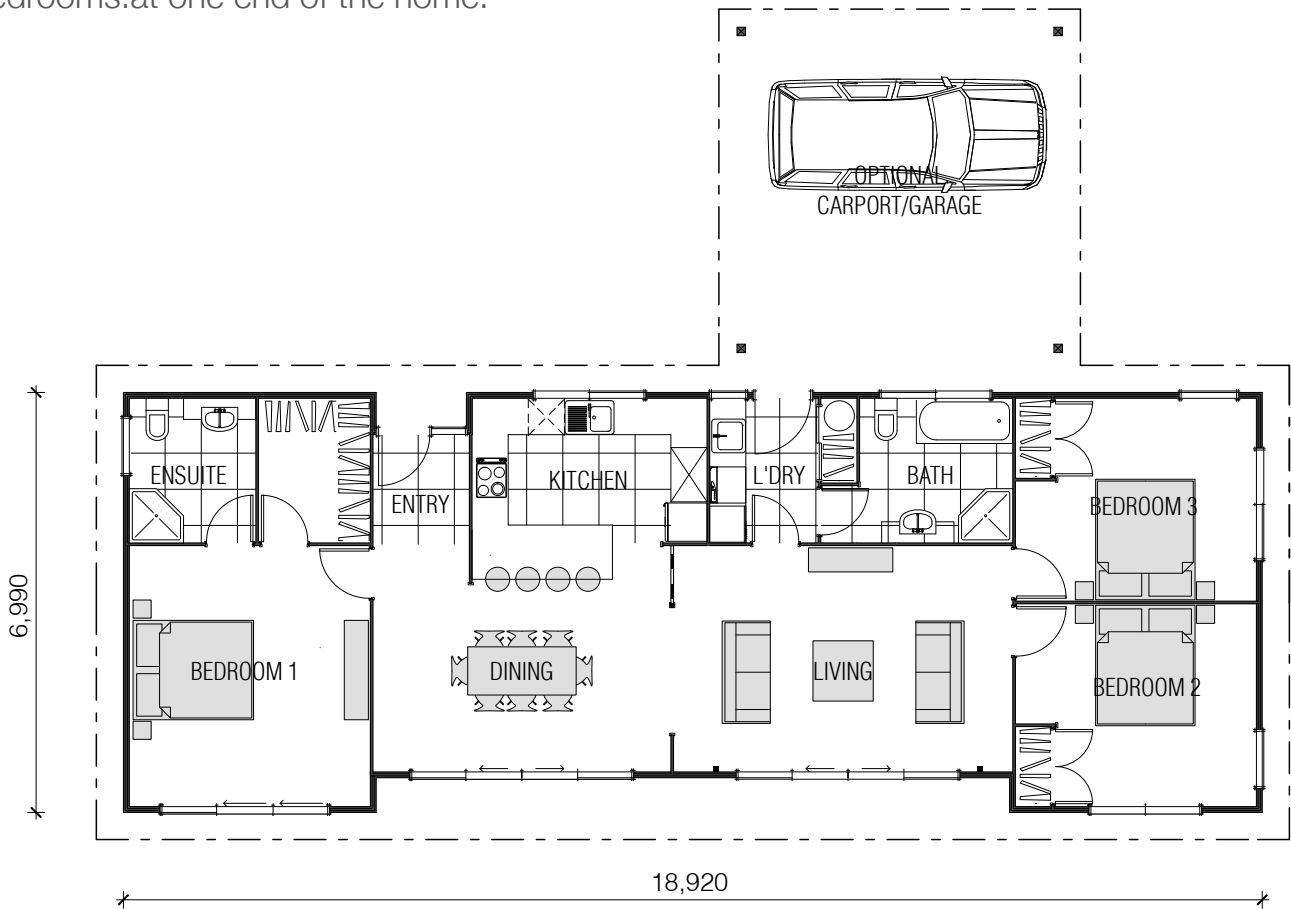




# Skagen

125m<sup>2</sup>  3  1  2  optional

A split-level, mono-pitched roof gives this three-bedroom family home a contemporary flavour. Clerestory windows ensure the interior of the house enjoys plenty of natural light. The master suite with it's walk in wardrobe and ensuite is private, separated from the other bedrooms.at one end of the home.







Skagen 125m<sup>2</sup>



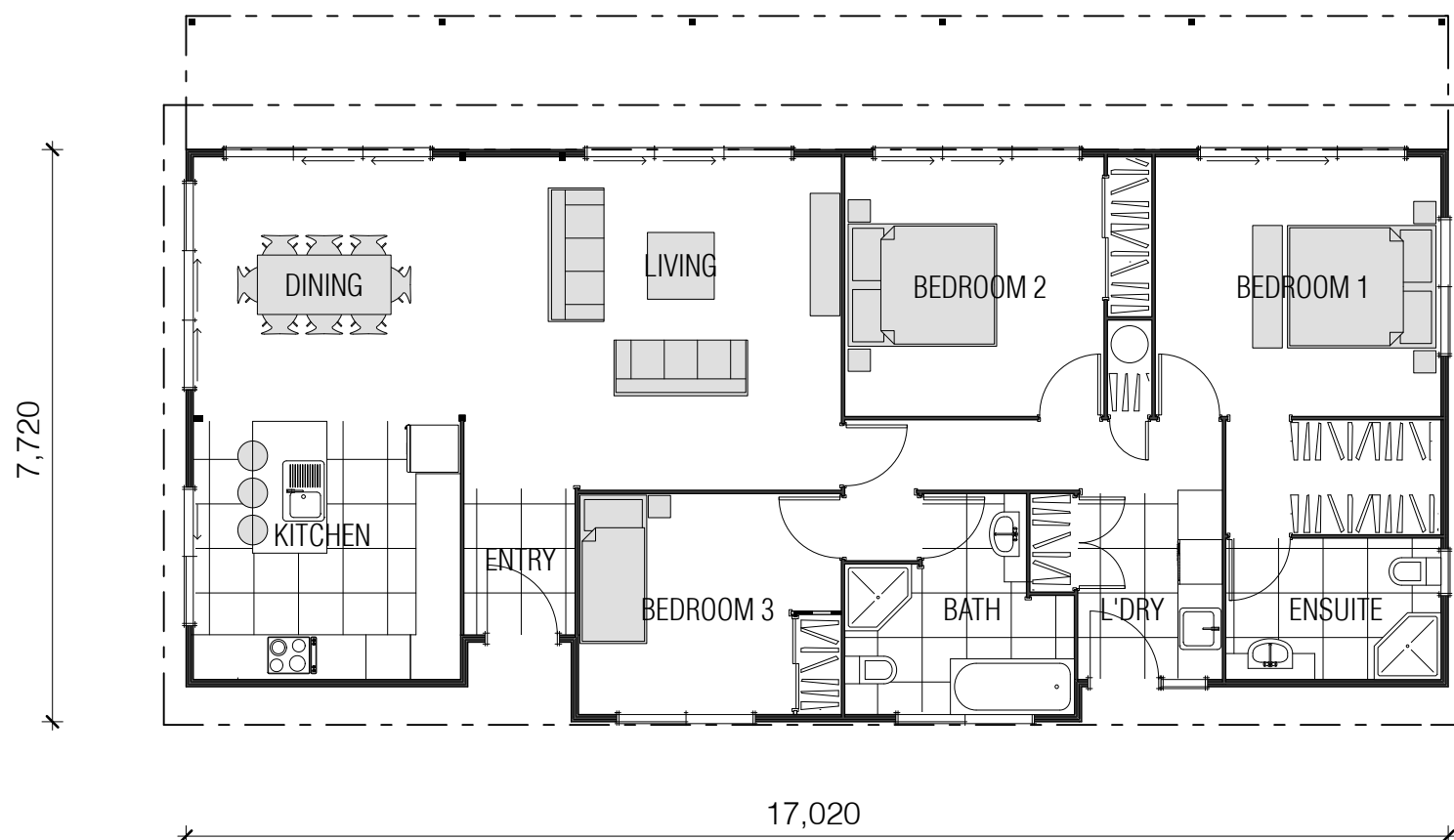




# Te Rakau

125m<sup>2</sup>  3  1  2  optional

Clerestory windows along the front facade bring a light and airy feel to the interior of this house, while sliding doors ensure living areas and bedrooms have a good connection with the deck.







Te Rakau 125m<sup>2</sup>







# Lifestyler

127m<sup>2</sup>



3



1

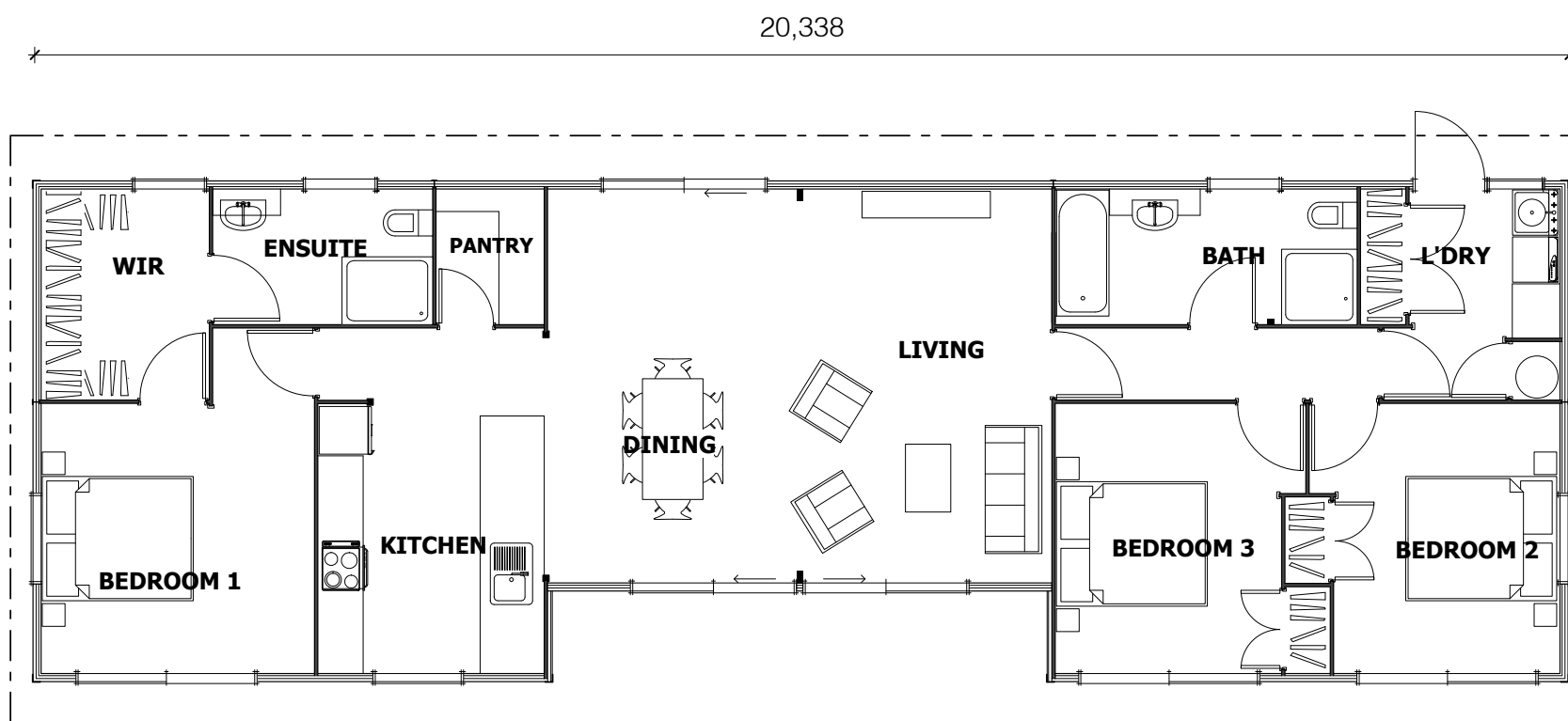


2



optional

Generous floor length windows and ranch sliders bringing in abundant light and maximise your views. Clean lines and sloped sarked ceilings deliver classic Lockwood styling and a great sense of space in this small modern home.







Lifestyler 127m²



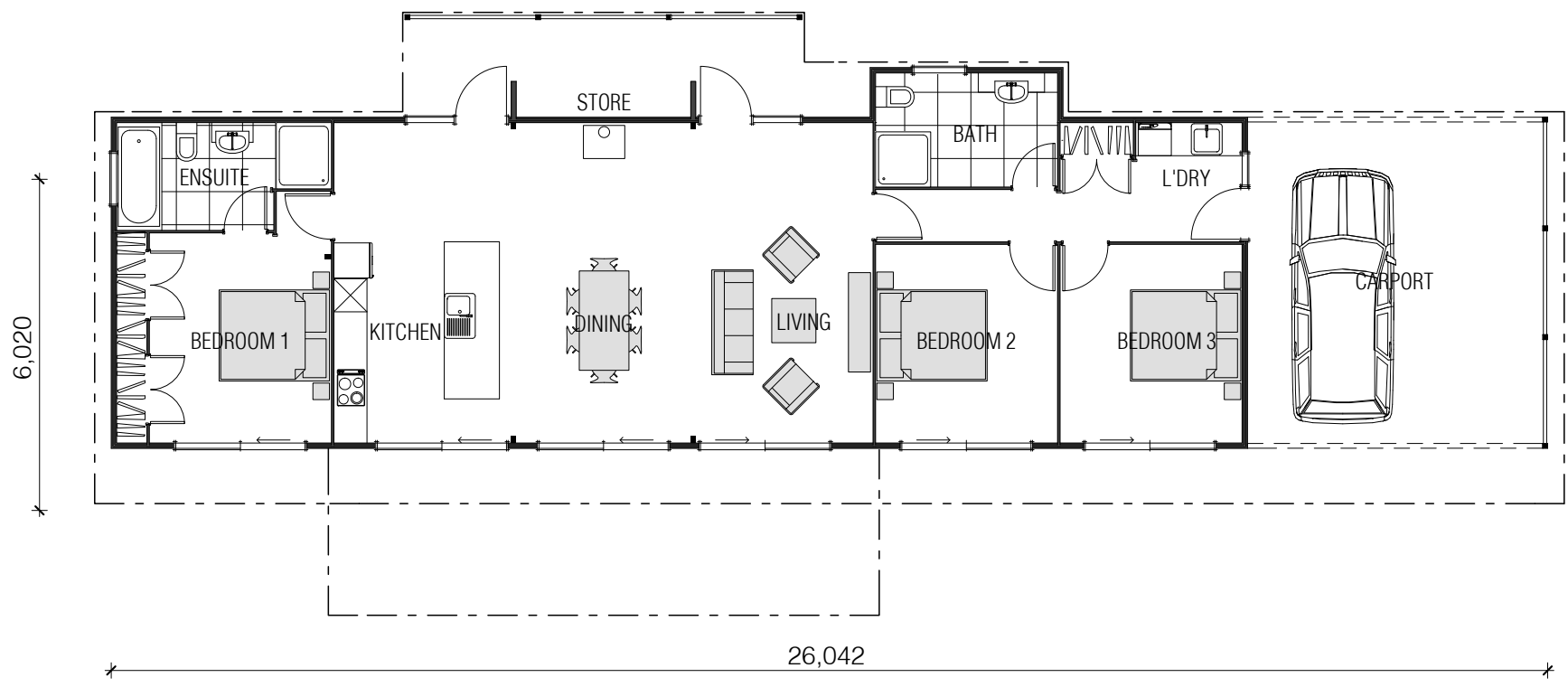




# Verandah

127m<sup>2</sup>   3   1   3   optional

Behind the long, low frontage of the Verandah is plenty of space for comfortable family living. Living areas open through sliding doors onto the garden, and separate the master suite from the other two bedrooms.







Verandah 127m<sup>2</sup>







Contact us about your home building plans today!

Phone **0508 562 596** or **Click Here** to get in touch



**LOCKWOOD**

Designed for good